

Lower Los Angeles River Implementation Advisory Group Meeting

February 20, 2019 | 8:00 – 10:00 A.M.

LA County Public Works | Conference Room A
900 S Fremont Avenue, Alhambra, CA 91803

AGENDA

Objective: To discuss the project information packet and project resources developed by the Committees, and other LA River Updates.

- I. Welcome & Introductions**
- II. Previous Quarter Recap**
- III. Discuss Project Review Process**
 - a. Review draft project information packet/checklist
 - b. Identify potential projects
 - c. Identify project resources
- IV. Project Updates**
 - a. Metro LA River Path Project
 - b. Parque dos Rios
 - c. Los Angeles River Master Plan Update
 - d. Public Equestrian Rest Area
 - e. Wrigley Greenbelt
- V. RMC Update**
- VI. Open Forum / Public Comment**
- VII. Next Steps**
 - a. Project Identification
 - b. Committee Meetings – March/April
 - c. IAG Meeting – May 22, 2019





Lower Los Angeles River Implementation Advisory Group

Project Information Packet

The Lower LA River Implementation Advisory Group (IAG) aims to ensure that subsequently implemented projects are carried out in accordance with the Lower LA River Revitalization Plan and that stakeholders continue to have a voice in implementation. In its role as an advisory body, the IAG will provide guidance on proposed projects, but ultimately, individual entities with jurisdiction along the river corridor including the LA County Flood Control District, the US Army Corps of Engineers, and the cities will continue having decision-making authority.

Project Name _____

Project Location _____

Current Project Phase _____

Project Proponent _____

Mailing Address _____

Contact Person _____ Department/Title _____

Email _____ Phone _____

Project Description (Attach map/site layout/concept sketch):

The purpose of this document is to aid in the discussion and development of project review criteria. The proposed topics are suggestions and may be changed, removed, or added to. Each Committee is to review and shape the criteria to fit the goals of their Committee.

When reviewing this discussion document, please consider:

What should this document contain? Is it touching on all themes pertinent to the Committees and the Lower Los Angeles River?

References/Letters of Support (If available, list and attach):

Project Discussion

The intent of the project packet is to help the proposed project remain consistent with the Lower Los Angeles River Revitalization Plan (LLARRP) and identify areas of potential need where the committees and the Implementation Advisory Group (IAG) can be a resource to aid in finding funding, project partners, innovation, etc. Please answer the following questions as completely as possible given the stage of the project.

	PREWI	PPC	PACE	Question	Yes	No
General				Is the project consistent with the Lower Los Angeles River Revitalization Plan (LLARRP)?		
				Explain:		
Water				Does the project improve the overall water quality of the Los Angeles River?		
				Explain:		
				Does the project implement stormwater capture, water conservation practices, and/or other methodologies?		
				Explain:		
Environment				What environmental documentation (CEQA, NEPA, etc.) will be required or has been completed for the project?		
				Explain:		
				Are there any activities associated with the project that could impact the environment such as trash, pet waste, or chemicals?		
				Explain:		
				Will the project reduce or mitigate GHG emissions, improve air quality, and/or improve water quality?		
				Explain:		
Infrastructure				Will the project modify existing infrastructure such as flood control channels, open space, utility corridors, ROW land use, and transportation corridors?		
				Explain:		
Habitat & Ecosystem				Does the project create habitat or improve ecosystem health within the watershed?		
				Explain:		
				Is there native Los Angeles River riparian/wetland vegetation planned for the project?		
				Explain:		
Multi-Benefit				Does the project expand existing or create new multi-benefit opportunities?		
				Explain:		

For Discussion Only

	PREWI	PPC	PACE	Question	Yes	No
Funding				Is there potential funding the project proponent is seeking for the project?		
				Explain:		
				Are there any funding gaps identified in the project?		
				Explain:		
				Are there any identified partnerships?		
				Explain:		
Policy				Are there plans for addressing safety and security within the project limits?		
				Explain:		
				Is the project identified in any existing plans/policies (federal, state, local)?		
				Explain:		
Equity				Is there a group the project intends to serve (e.g., residents, youth, pedestrians, cyclists, artists, equestrians, bird watchers)?		
				Explain:		
				Is the project in a disadvantaged community?		
				Explain:		
				Does the project address the concerns of equity, displacement, and environmental justice?		
				Explain:		
Community Engagement				Has the project been engaging the community in its development process?		
				Explain:		
				Are there future plans for community engagement?		
				Explain:		
				Has the project received feedback?		
				Explain:		

For Discussion Only

Building Blocks

The LLARRP developed a vast array of Building Blocks – modular concepts and strategies – that can be assembled in a variety of ways to develop specific projects, policies, and programs. Please indicate the Building Blocks that the proposed project intends to use.

Applied	Building Block	Applied	Building Block
	Active space		Leverage pump stations to convey stormwater
	Additional permanent homeless shelters		Lighting
	Bike hubs		Loop and spur trails
	Bioswales		Low income access
	Boardwalks and overlooks		Low water crossings
	Brownfields remediation		Low-flow channel modifications
	Climbing wall		Multi-use publicly-owned properties
	Commercial zone access		Onsite water recycling
	Community garden		Open space access
	Community gateway		Overcrossing
	Continuous park space		Oyster bed restoration
	Curb cuts/street eddy basins		Passive space
	Destination stops		Pedestrian and cyclist access
	Diversion to sanitary sewer		Permeable paving
	Drinking fountains		Plazas
	Dry wells		Pop-up parks
	Elevated paths		Property acquisition
	Equestrian trails		Public art and murals
	Floodplain expansion		Recreation center
	Green infrastructure		Regional gateway
	Habitat area		Shade (veg. or structural)
	Historical, cultural, environmental education/assets/signage		Transit-oriented development
	Homeless space sharing		Tunnels
	Infiltration basins and trenches		Undercrossing
	In-river access and safety		Water capture and onsite storage
	Leverage planned regional water recycling projects		Water recreation

Source: Lower Los Angeles River Revitalization Plan, [Volume II](#), p. 1.3-16 – 1.3-19, Table 1.3-1.

LOWER LA RIVER

IMPLEMENTATION ADVISORY GROUP MEETING

FEBRUARY 20, 2019



AGENDA

- Last Quarter Recap
- Discussion: Project Review
- Presentations
 - Metro LA River Path Project
 - Parque dos Rios
- Updates
 - LA River Master Plan Update
 - Public Equestrian Rest Area
 - Wrigley Greenbelt
- Open Forum/Public Comment
- Next Steps



PRESENTATION: METRO LA RIVER PATH PROJECT



Parque Dos Rios

Lower LA River Revitalization Plan | Signature Project Element

LA River and Rio Hondo Confluence
City of South Gate

Project Overview | Summary

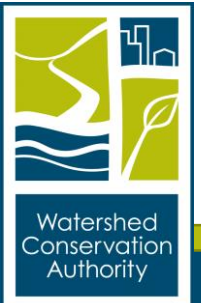
The Watershed Conservation Authority is currently developing the 7+ acre Parque Dos Rios Bike Stop and Habitat Enhancement project located along the Los Angeles River at the confluence with the Rio Hondo just north of Imperial Blvd in the City of South Gate.



Edmund G. Brown, JR., Governor
John Laird, Secretary for Natural Resources

Acquisition Funded by
Proposition 40

California Clean Water, Clean Air, Safe Neighborhood
Parks, and Coastal Protection Act of 2002



Site Location Views

LLAR Bike Trail and Habitat Area



South View of LLAR Trail Adjacent to Project Site



North View from Project Site with Trail to the East

Making It Happen | Partners, Permitting Agencies and Funders

Project Team and Non-Profit Contractor

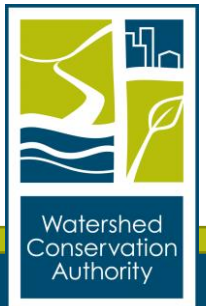
- WCA | Land Owner and Developer
- MRCA Rangers | Maintenance and Site Protection
- North East Trees | Design | Landscape Architect
- Conservation Corps of Long Beach | General Contractor

Project Supporters and Permitting Agencies

- City of South Gate | Jurisdiction
- Los Angeles County Flood Control District and ACOE | River Channel and Structures
- Caltrans | ROW and Drainage Easement
- Exxon and Chevron | Underground Pipelines

Funders

- LA County Regional Parks and Open Space District \$1.5 Million Development Grant
- Rivers and Mountains Conservancy Acquisition and Design (Prior Phase)
- CCLB Active Transportation Program Supplemental Funding | Development and Local Work Force Training | At-Risk Youth



Community Engagement | Local Youth



Boy Scout Troop from the City of South Gate working arranged through North East Trees and alongside WCA come together to paint habitat log poles for the project site.

LLAR Revitalization Plan | Signature Project Element

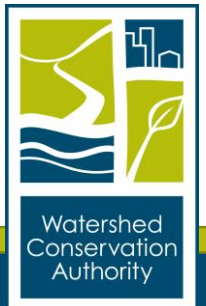
LLAR Revitalization Plan Signing Event at the Confluence of the Rio Hondo and Lower Los Angeles River in the City of South Gate. State, County and Local officials in attendance to mark this special milestone.

Parque Dos Rios site is seen in the background as California Assembly Speaker, Anthony Rendon marks the occasion.



Consistency with LLAR Plan | Local Youth

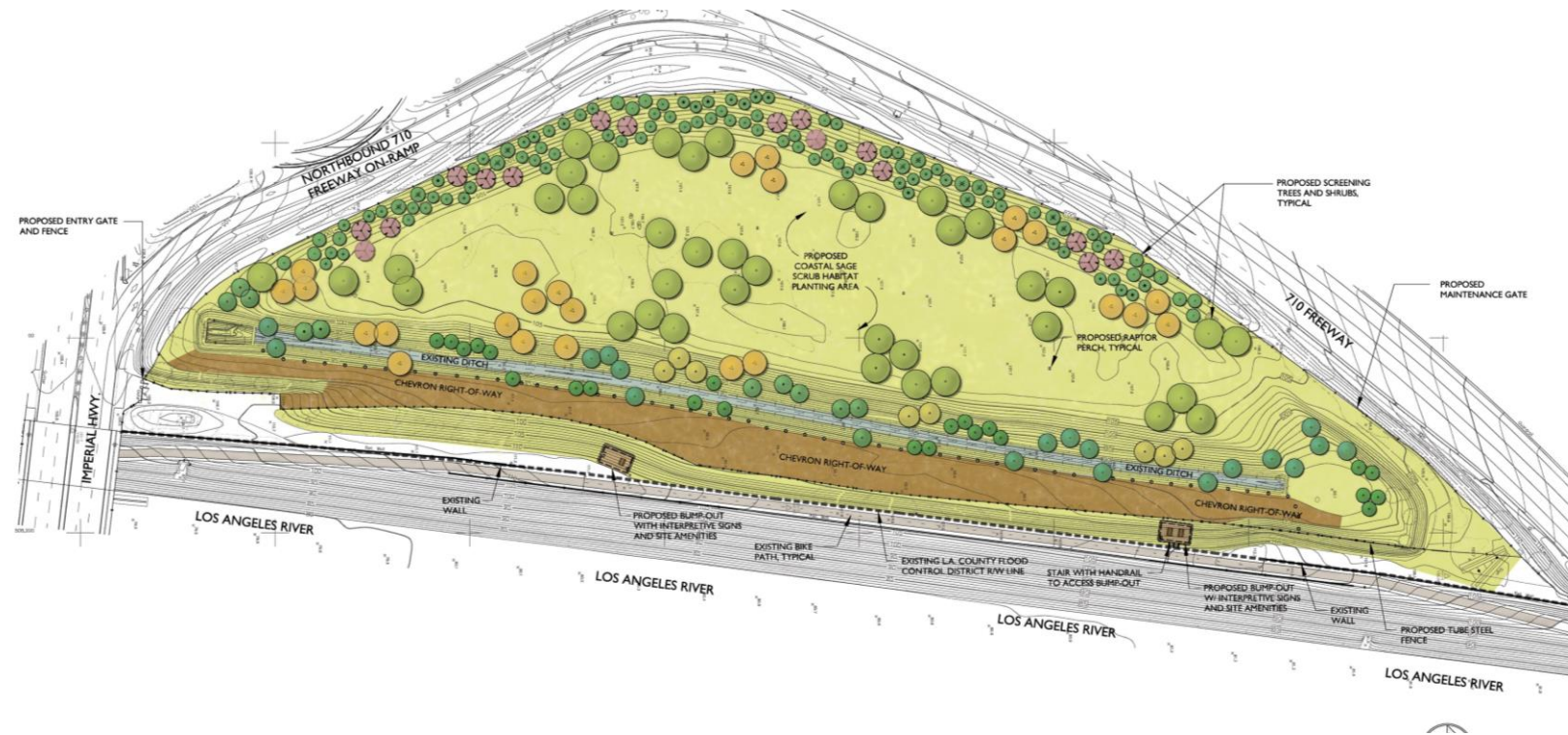
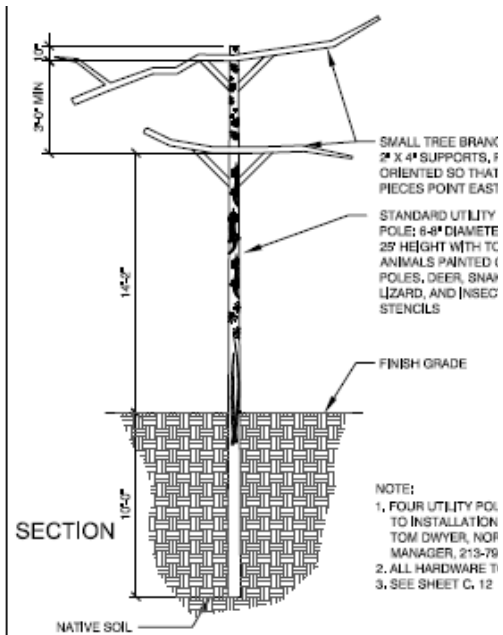
- Create new upland habitat incorporating native and climate appropriate vegetation of the Los Angeles River
- Create new multi-benefit opportunities primarily related to public realm, open space, recreation, water and environment
- Activate and increase safety through amenities, visitor use and maintenance activities related to the improvements
- Multi-jurisdictional project constructed on and adjacent to publicly-owned properties and easements
- The project will primarily serve local residents and all trail users. Regional draw will increase as more greenway projects are developed



Amenities | LLAR Building Blocks

Habitat enhancement and environmental improvements

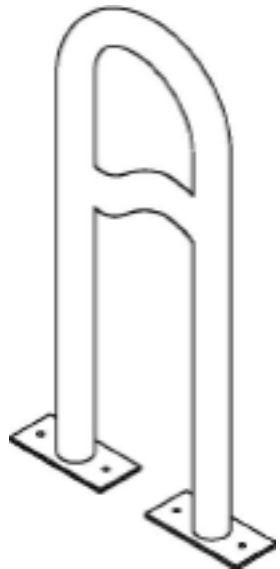
Native Planting and Raptor Perches



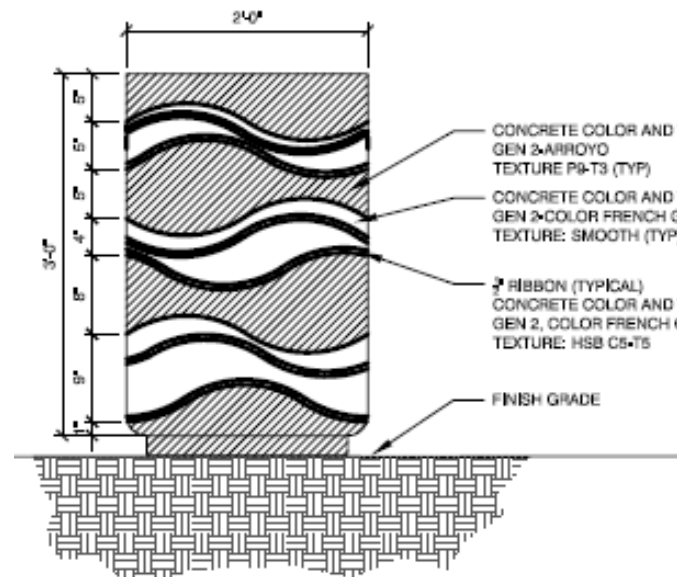
Amenities | LLAR Building Blocks

Overlook Provides Sitting Area to Enjoy Habitat and to Rest Along the Trail

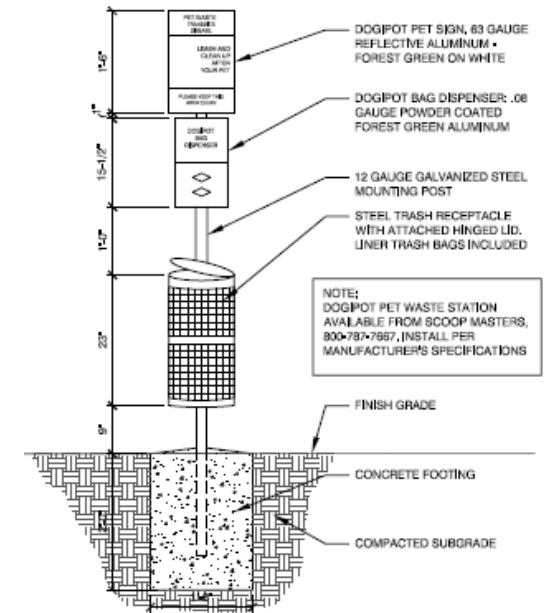
Bike Racks, Trash Receptacle, Bench, Dog Waste Station



Decorative Bike Racks



Decorative Concrete Trash Receptacle

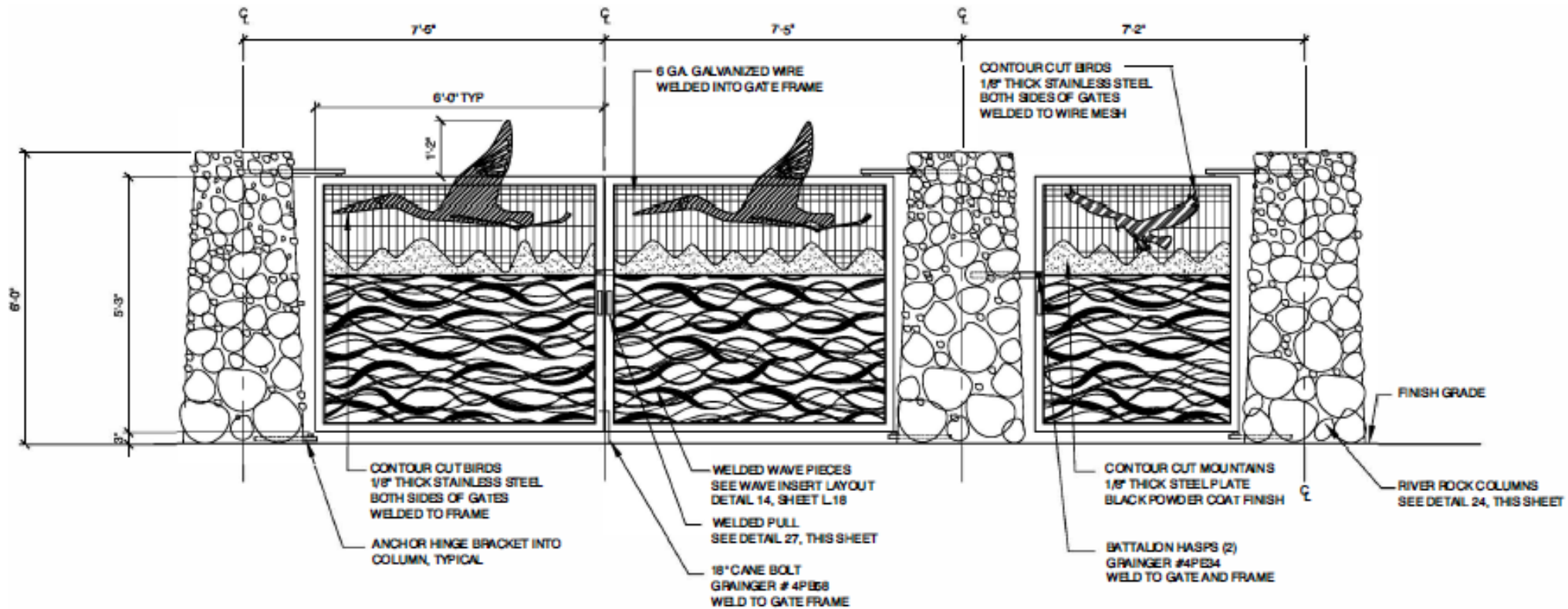


Dog Waste Station

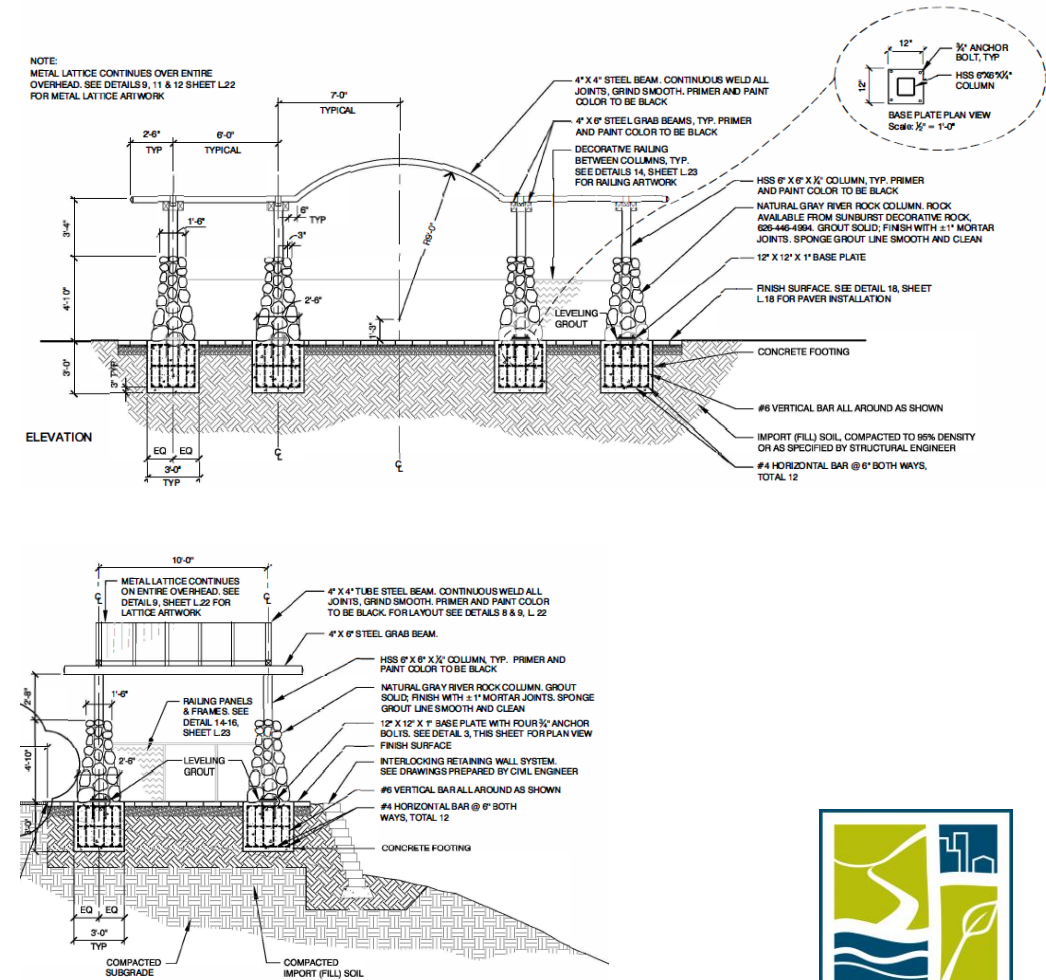
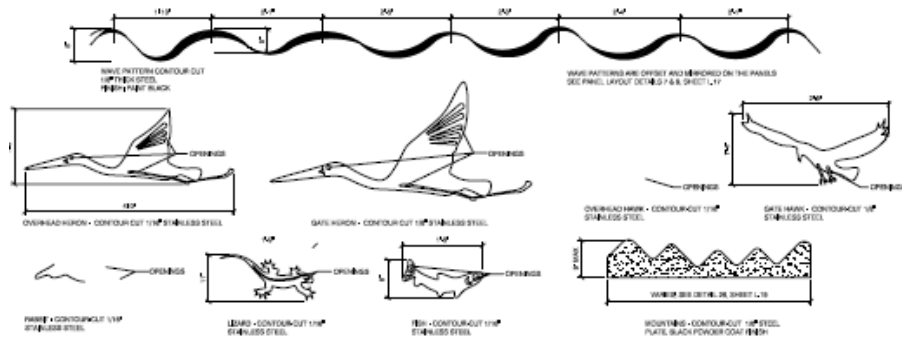
Amenities | LLAR Building Blocks

Public art

Decorative Sculptural Metal Gates and River Rock Columns



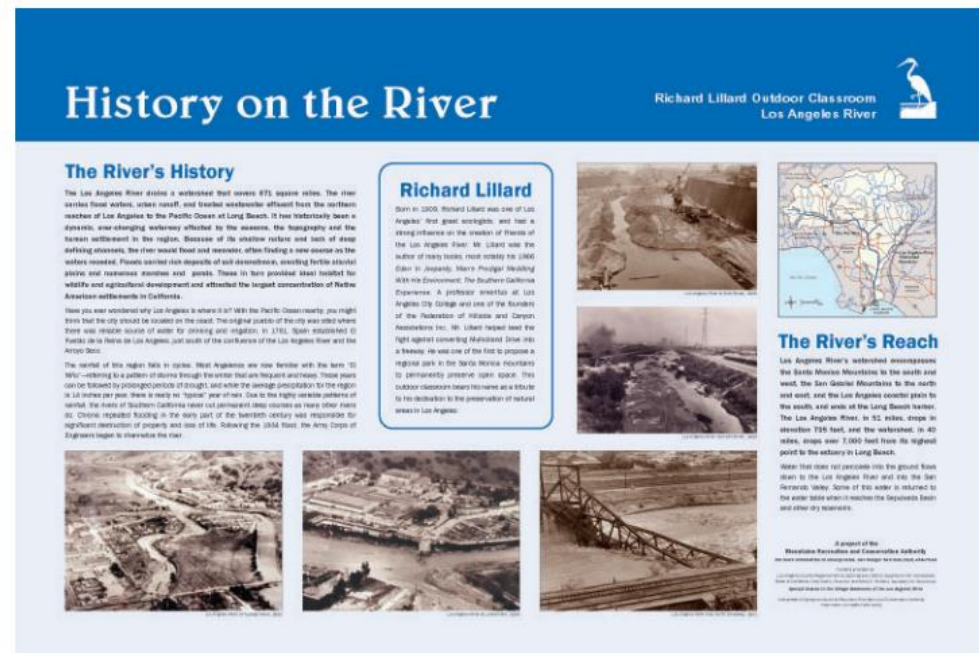
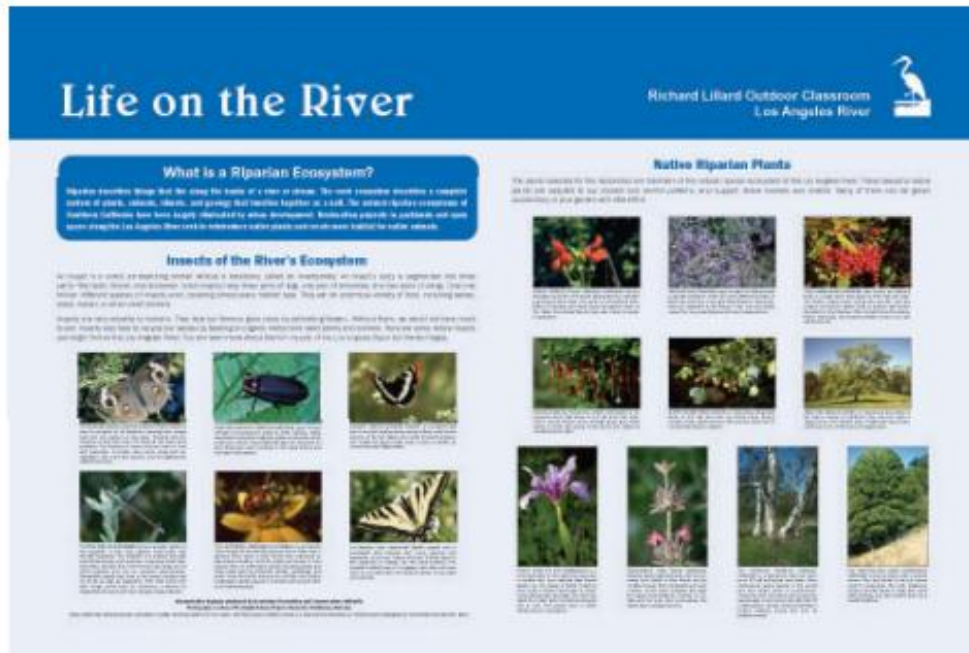
Public art



Amenities | LLAR Building Blocks

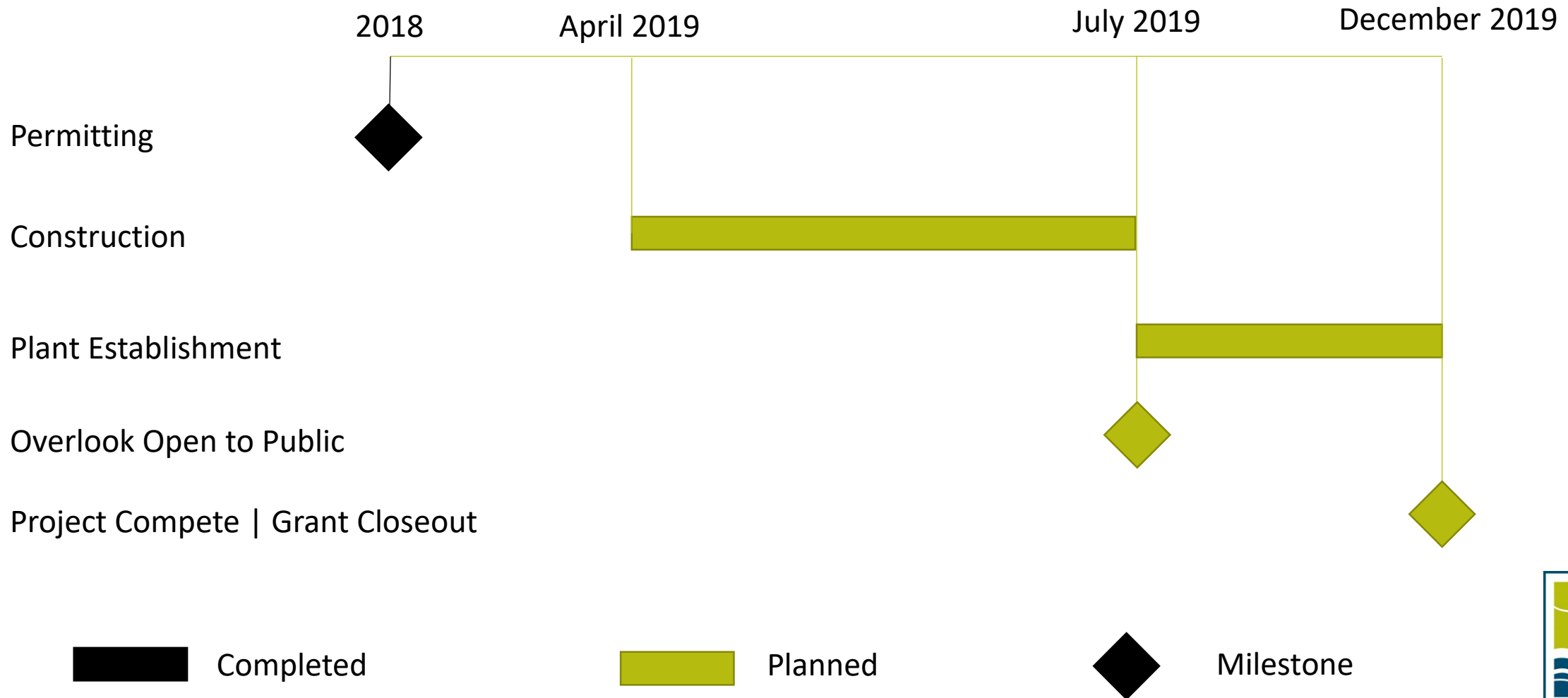
Interpretive Displays

Our Connection to the Watershed and Habitat



Examples of Interpretive Signage

Timeline | Construction Schedule and Milestones



Thank You |

Watershed Conservation Authority

Debbie Enos | Deputy Executive Officer

626-815-1019 ext. 112

denos@wca.ca.gov





UPDATE: LA RIVER MASTER PLAN UPDATE

LA RIVER MASTER PLAN UPDATE

- For Information:

- LARiverMasterPlan.org

- Contact Information:

- LARiver@dpw.lacounty.gov



COMMENT SESSION: LA RIVER MASTER PLAN UPDATE

PUBLIC EQUESTRIAN REST AREA

Los Angeles County Flood Control District



PERA and the Lower LA River Revitalization Plan



Promote user experience along LLAR
Manage flood risk
Create and enhance equitable connectivity
and access

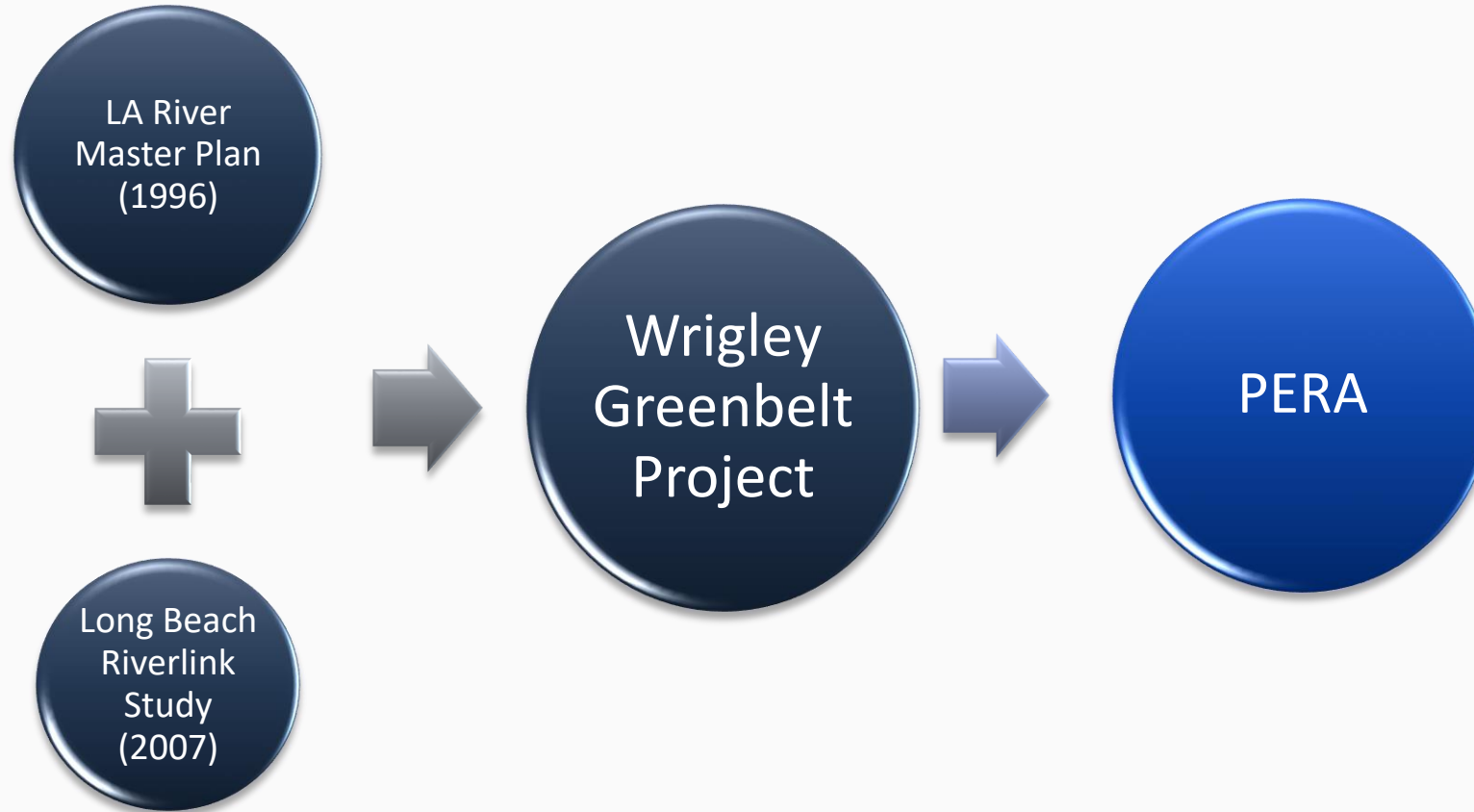


Address localized flooding/drainage needs
Publicly accessible facility
Passive recreational features to improve user
experience



Public
Equestrian
Rest Area

Overview of PERA



Jack Wrigley Greenbelt



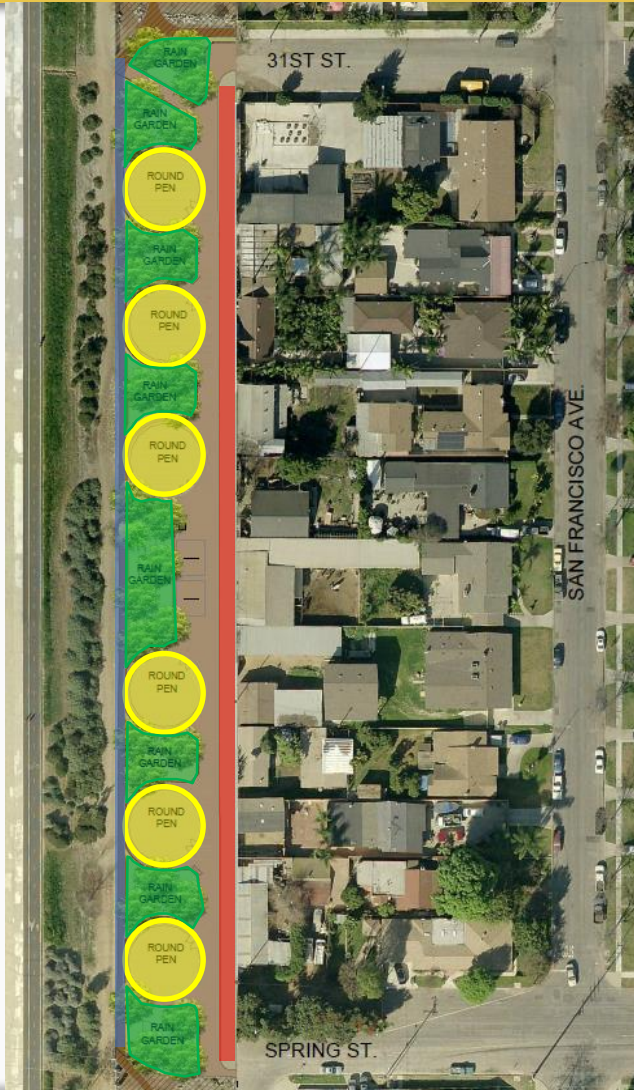
- 1 mile of greenway
- 34th St. to Willow St.
- Features native vegetation, trails, and vegetated swales

Public Equestrian Rest Area



*Purpose of PERA:
Create a win-win solution
that maintains the
equestrian way of life while
opening the site to public
use*

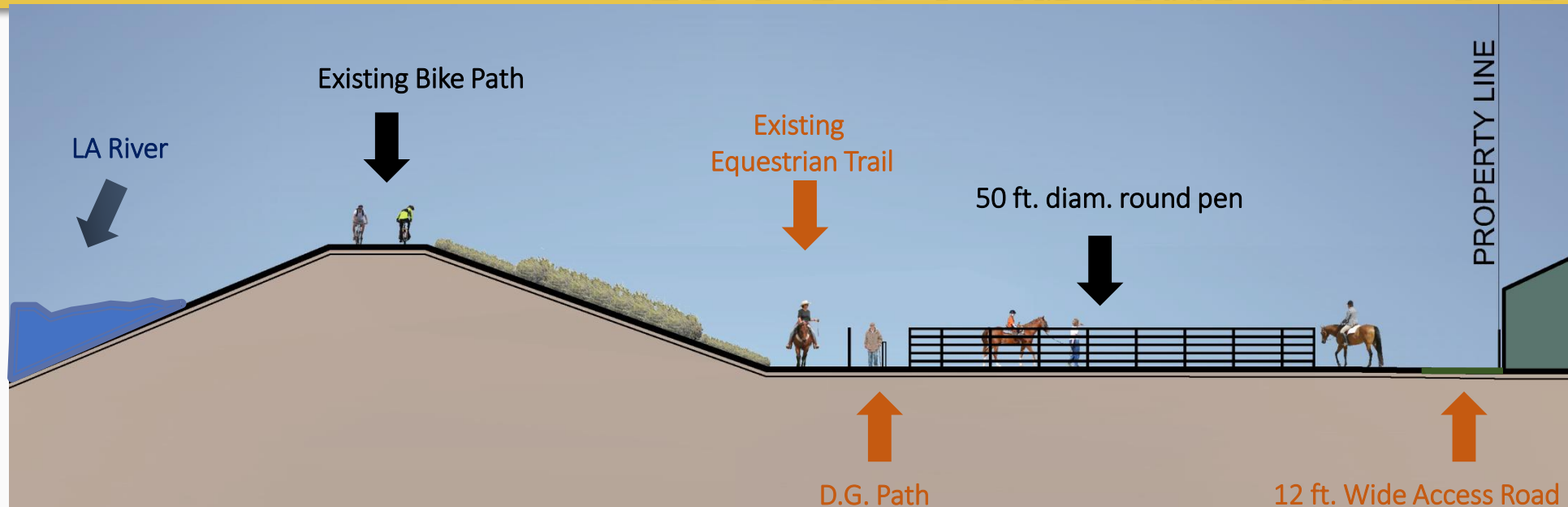
PERA Features



Multibenefit Features

- *Equestrian Enhancements*
 - Round Pens
 - Automatic Horse Waterers
 - Hitching Rails
 - 12 wide access road
- *Passive Recreation Enhancements*
 - DG walking path
 - Native landscaping
 - Drinking fountains
- *Drainage Improvements*
 - Rain Gardens

PERA Cross Section



Benefits of PERA:

- ✓ Maintains the equestrian way of life
- ✓ Links existing County equestrian Trail
- ✓ Complements the Wrigley Greenbelt Project
- ✓ Publicly Accessible Equestrian Facility

Schedule

- Summer 2019: Complete design
- Summer/Fall 2019: Update meeting with residents
- Early 2020: Begin construction

Thank You!

Contact Information:

Ezekiel Okoya, P.E.

Los Angeles County Public Works

eokoya@dpw.lacounty.gov

(626) 300-4592

WRIGLEY GREENBELT PROJECT UPDATE

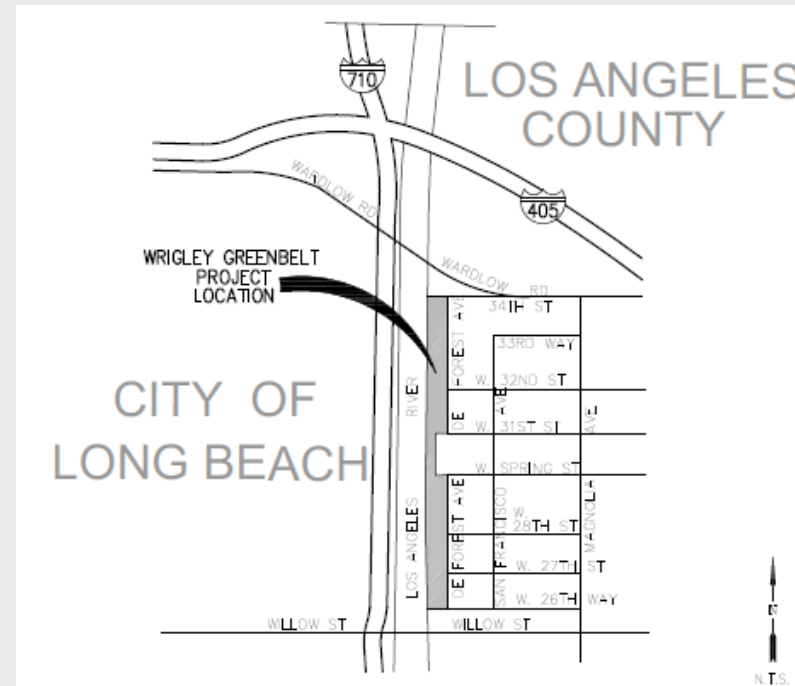
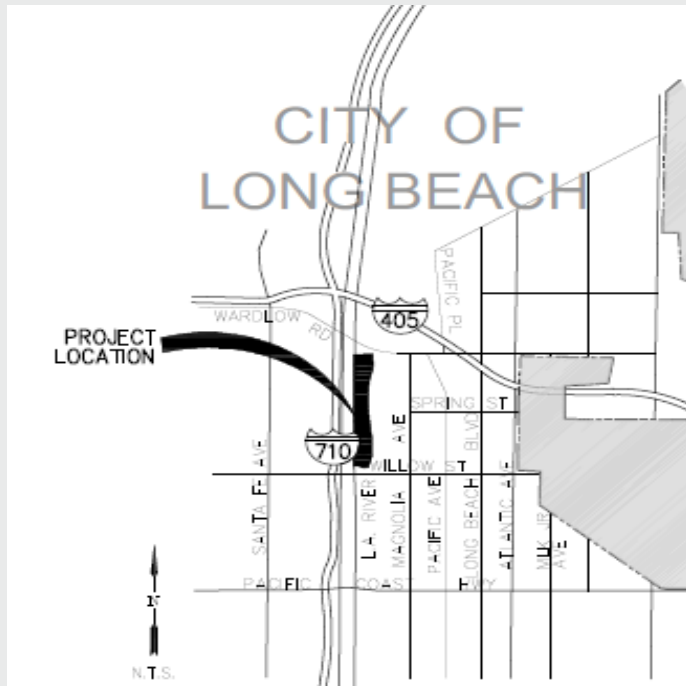
February 20, 2019



CITY OF
LONG BEACH

About the Wrigley Greenbelt Project

- Wrigley Greenbelt Project will develop 8 acres of new open space along the LA River, from 26th to 34th Street
- Includes landscaping, irrigation, walking trail, and site furnishings
- Project initially identified in the City's RiverLink Plan (2003 & 2007)

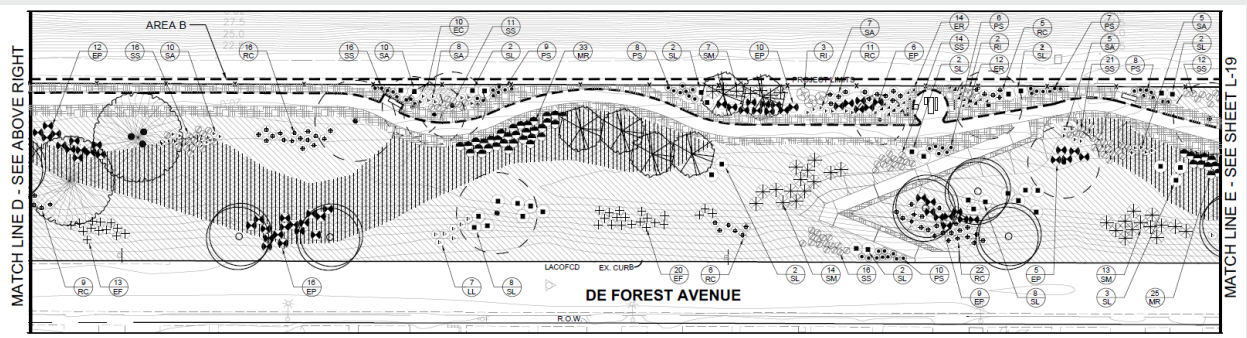
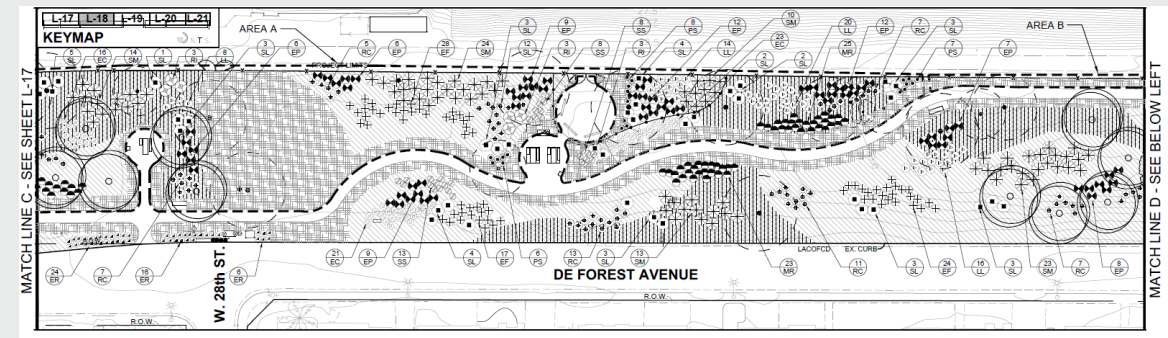
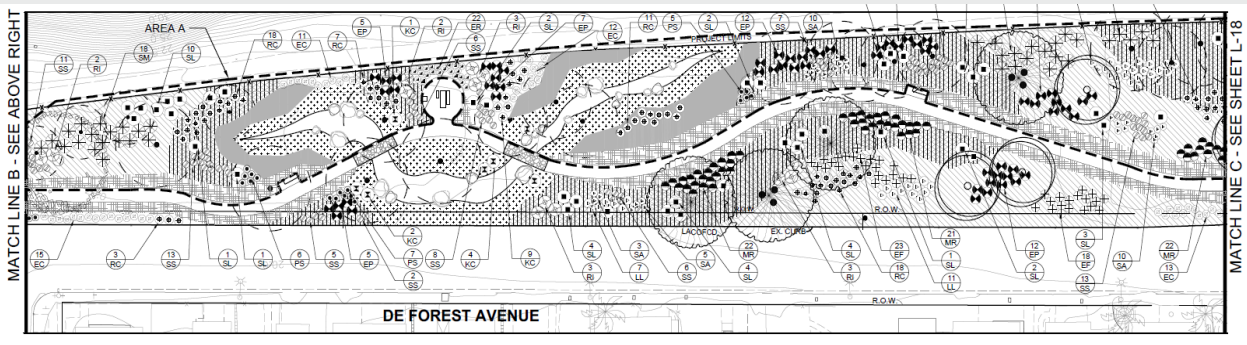
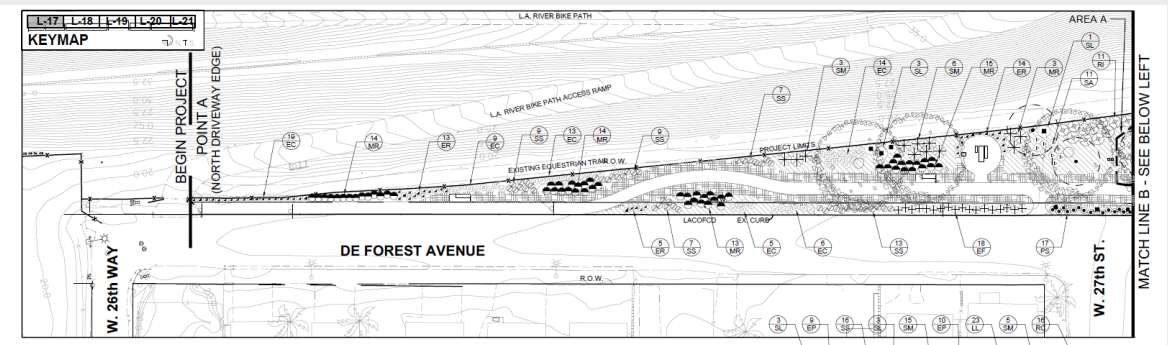


Project Budget

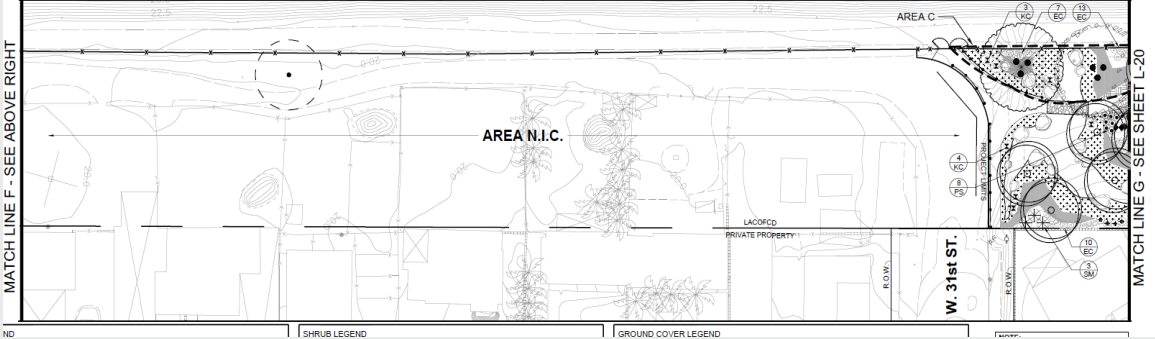
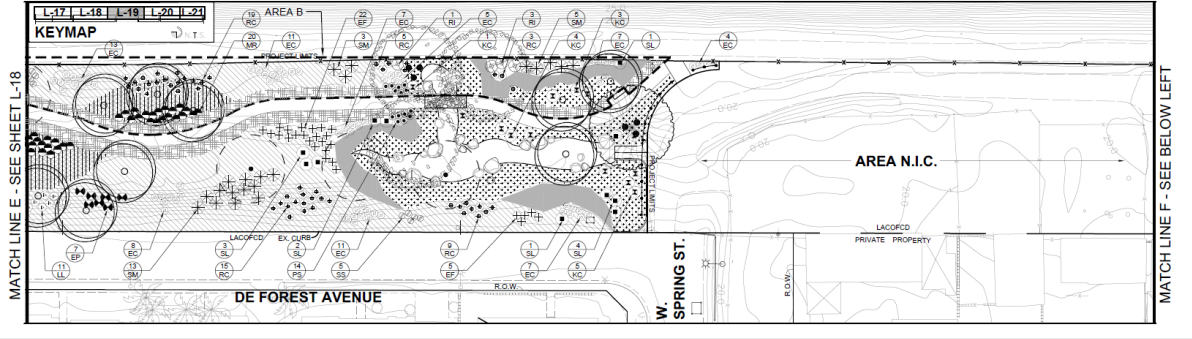
- City has secured three LA County Regional Park and Open Space District grants to fund the Project

GRANT	AMOUNT
Greenbelt Development	\$1,000,000
Greenbelt Development	\$300,000
Greenbelt Trail	\$325,000
PROJECT TOTAL	\$1,625,000

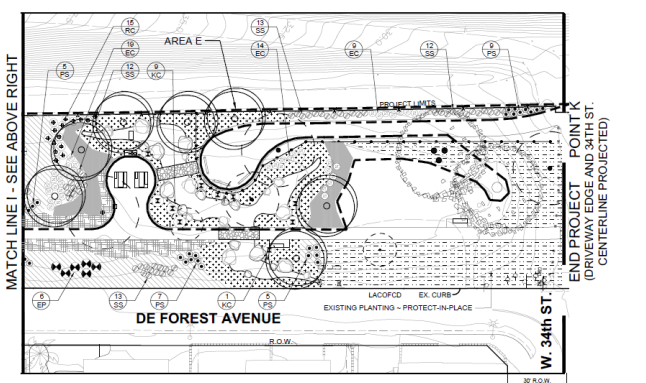
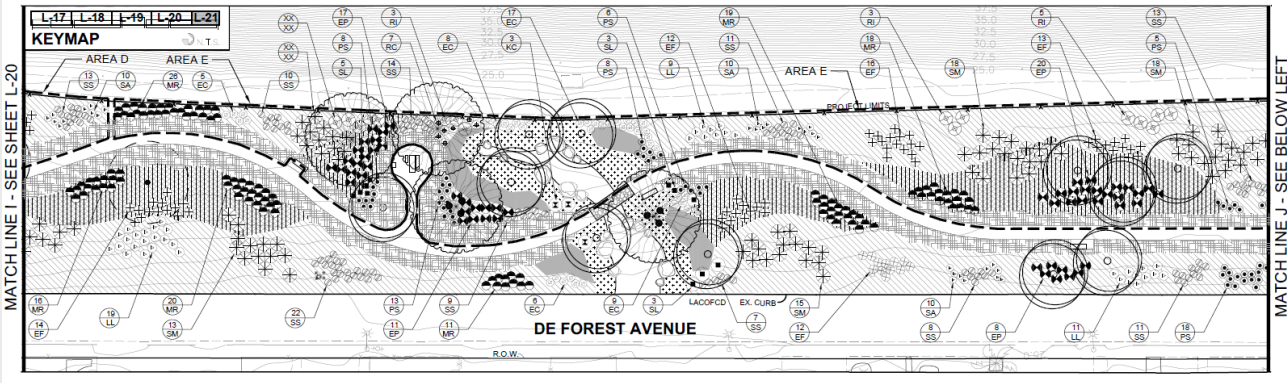
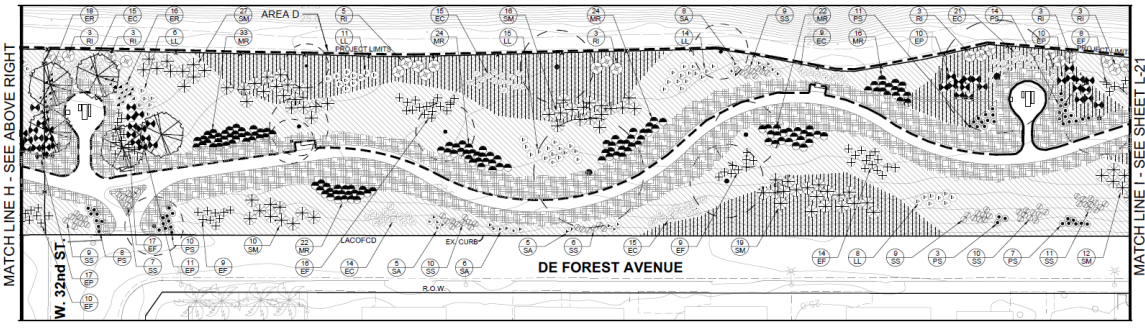
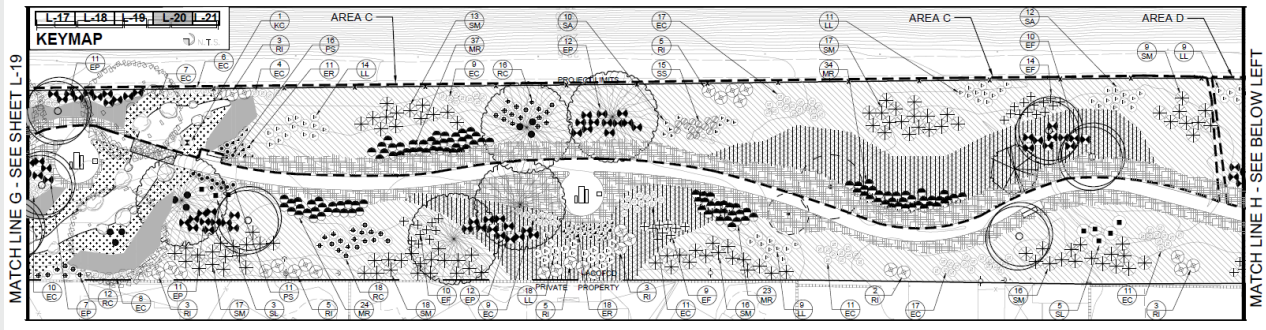
Project Design - South



Project Design - Center



Project Design - North



Anticipated Schedule

- Mar 4 Project Out To Bid
- Apr 1 Bid Opening
- Jun/Jul NTP/Pre Construction Meeting
- Aug Construction Start
- Jan/Mar Construction Complete
- Apr/Jun Plant Establishment Period
- Jul/Sept Project & Grant Close Out

Thank You

Meredith Reynolds
Park Development Officer
Parks, Recreation & Marine



OPEN FORUM/PUBLIC COMMENT



NEXT STEPS



NEXT STEPS

- Committee Meetings

- April 2019

- Next IAG Meeting

- Date: May 22, 2019

- Time: 9 AM – 11 AM

- Location: LA County Department of Public Works Headquarters

- Conference Room A

WWW.LOWERLARIVER.ORG

THANK YOU!



LOWER LOS ANGELES RIVER IMPLEMENTATION ADVISORY GROUP

February 20, 2019

8:00 AM - 10:00 AM

	Name	Organization	Phone	Email
1	Riley James	LACFCD	442	rjames@dpw.lacounty.gov
2	Kayla Kelly-Statten	CCLB		kkellystatten@cclb-corps.org
3	Luhe OKoya	LACFCD		elokoya@dpw.lacounty.gov
4	LYNDON TAT	LACFCD		ltat@dpw.lacounty.gov
5	LEE ALEXANDERSON	LACFCD	626-458-4370	
6	MIA LEHRER	Studio MLA	2133843844	mia@studio-mla.com
7	MIGUEL RAMOS	TNC	626.375.6799	
8	Justin Luedy	Port of Long Beach	562-283-7124	justin.luedy@polb.com
9	Edward Belden	LACity	213- -9924	edward.belden@lacity.org
10	Anthony Nercessian	LADWP	213-367-8329	anthony.nercessian@ladwp.com

LOWER LOS ANGELES RIVER IMPLEMENTATION ADVISORY GROUP

February 20, 2019

8:00 AM - 10:00 AM

	Name	Organization	Phone	Email
11	DAVID NAVAREZ	LADWP	(213) 367-3621	david.navarez@ladwp.com
12	Kelsey Jessup	TNC	650-248-8878	kelsey.jessup@tnc.org
13	JIM MEIER	TRM. 64 AL	310-344-9229	
14	JULIA SALINAS	Metro	213-922-7413	salinasju@metro.net
15	Natasha Krakowiak	La County DPR	(626) 588 5313	nkrakowiak@parks.lacounty.gov
16	Claudia Arellano	City of Vernon	323 583 8811	carellan@ci.vernon.ca.us
17	Monica Killen	MNS Engineers	909-313-1036	MKillen@mnsengineers.com
18	Selena Gray	Los Angeles Neighborhood Land Trust		sgray@gmail.com
19	Gustavo Romo	City of Bell	(323) 923-2623	gromo@cityofbell.org
20	Robert Blackship	Trout Unlimited	562.355.2876	SouthCoastTV@gmail.com

LOWER LOS ANGELES RIVER IMPLEMENTATION ADVISORY GROUP

February 20, 2019

8:00 AM - 10:00 AM

	Name	Organization	Phone	Email
21	Karl Eggers	Walk Bike LB	(562) 843-4184	karl@walkbike1b.org
22				
23				
24				
25				
26				
27				
28				
29				
30				

LOWER LOS ANGELES RIVER IMPLEMENTATION ADVISORY GROUP

February 20, 2019

8:00 AM - 10:00 AM

	Name	Organization	Phone	Email
31	Joseph Gonzalez	RMC		JGonzalez@RMC-CA.gov
32	Debbie Enos	WCA		denos@WCA.ca.gov
33	Diana Morales	Speaker Rendon	(562) 529 3250	diana.morales@asm.ca.gov
34	Jon Dearnly	AECOM		jon.dearnly@aecom.com
35	Chau Vu	Bill Gaudin	562-334-1740	
36	Wick Garrity	ESA	562-296-5679	wgarrity@esassoc.com
37	Melissa Yen	Long Beach	(562) 570-5521	melissa.yen@longbeachga.gov
38	Raquel Beltran	Port Brown Institute	323-343-3770	raquel.beltran@calstatela.edu
39	Gladis Deras	South Gate	(323) 563-4576	gderas@sgate.org
40	Shea Thornbury	ESA	858 780 6186	sthornbury@esassoc.com