

Lower Los Angeles River Implementation Advisory Group Meeting

May 22, 2019 | 9:00 – 11:00 A.M.

Compton Creek Natural Park
941 W Cressey St, Compton, CA 90222

AGENDA

Purpose & Charge: Provide a public venue for discussion of proposed projects related to the Lower LA River, ensure proposed projects are consistent with the goals and objectives of the Lower LA River Revitalization Plan, and maximize multi-use opportunities and community benefits

- I. Welcome & Introductions**
- II. Committee Meeting Summary**
- III. Project Information Packet**
 - a. Project Review
 - b. Sample Review
 - c. Draft Discussion
- IV. Project Discussion**
 - a. Parque dos Rios – Q & A
 - b. River Ranger Program
 - c. LA River Master Plan Update
 - d. LB MUST
- V. RMC Update**
- VI. Open Forum / Public Comment**
- VII. Next Steps**
 - a. Project Identification
 - b. Committee Meetings – July 2019
 - c. IAG Meeting – August 21, 2019





IAG Project Review Process

Generally, this process will be used to identify plans, concepts, projects, or programs (Projects) that are located along the Lower LA River corridor, and then review them for consistency with the Lower Los Angeles River Revitalization Plan (LLARRP).

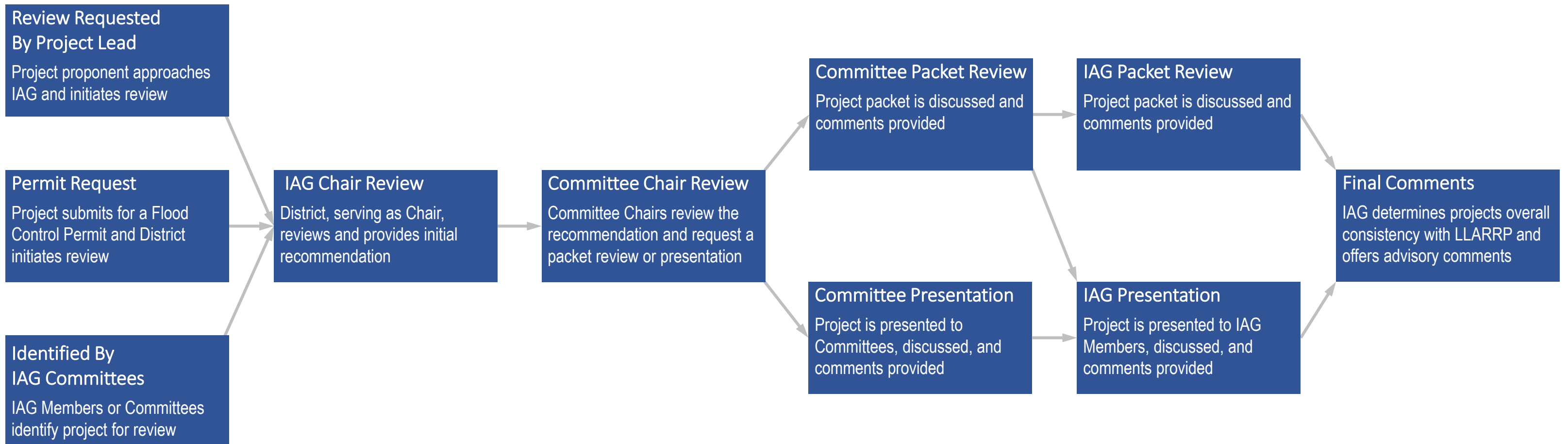
1 » Project Identification

2 » Project Review

3 » Committee Meeting

4 » IAG Meeting

5 » IAG Comments





Lower Los Angeles River Implementation Advisory Group

Project Information Packet

The Lower LA River Implementation Advisory Group (IAG) aims to ensure that subsequently implemented projects are carried out in accordance with the Lower LA River Revitalization Plan and that stakeholders continue to have a voice in implementation. In its role as an advisory body, the IAG will provide guidance on proposed projects, but ultimately, individual entities with jurisdiction along the river corridor including the LA County Flood Control District, the US Army Corps of Engineers, and the cities will continue having decision-making authority.

Project Name	<u>Long Beach Municipal Urban Stormwater Treatment (LB-MUST) Expansion</u>		
Project Location	<u>At the east bank of the LA River at Willow Street Interchange; and at east bank of the LA River at Artesia Boulevard Interchange</u>		
Current Project Phase	<u>Final Design and Construction</u>		
Project Proponent	<u>Gateway Water Management Authority</u>		
Mailing Address	<u>16401 Paramount Blvd</u>		
	<u>Paramount, CA 90723</u>		
Contact Person	<u>Grace Kast</u>	Department/Title	<u>Executive Officer</u>
Email	<u>Executive Officer</u>	Phone	<u>626-484-0338</u>

Project Description (Attach map / site layout / concept sketch):

The LB-MUST Expansion Project is a part of the LB-MUST program which intercepts polluted non-stormwater runoff and a percentage of the first flush of a storm flows generated within the Long Beach urban watershed (covering/treating over 12,000 acres) thereby preventing the transportation of pollution into the LA River. The program will improve water quality which in turn will also be beneficial to aquatic life by intercepting water runoff and reducing and/or eliminating pollution that would otherwise discharge into the LA River and spread onto City beaches and ocean waters. Recycled water, produced by the LB-MUST program, could be used in the parks to create and sustain wetlands habitat while providing a storage basin for the recycled water to be used in place of potable water for the irrigation of parks, parkways and riparian habitat within the park complex. The recycled water will also be used for the creation and support of urban greening along the Lower LA River.

The funding from the RMC Lower LA River Grant would facilitate an exhibition space at the expansion of the LB-MUST Project to the north at the east bank of the LA River at Willow Street Interchange and at east bank of the LA River at Artesia Boulevard Interchange, as shown on the following page. The expansion project would provide urban greening, activate open space, and provide wetlands and water quality features, and connects to the treatment facility, currently under design. The proposed improvements are consistent with the RMC program and the Proposition 1 Objective. (See attached map and exhibits)

References / Letters of Support (If available, list and attach):

Attached are letters of support from:

- Gateway Cities Council of Governments
- City of Long Beach District 9 Councilmember Rex Richardson
- Gateway Water Management Authority
- Wrigley Area Neighborhood Alliance



GATEWAY CITIES

COUNCIL OF GOVERNMENTS

October 30, 2018

Artesia

Avalon

Bell

Bellflower

Bell Gardens

Cerritos

Commerce

Compton

Cudahy

Downey

Hawaiian Gardens

Huntington Park

Industry

La Mirada

Lakewood

Long Beach

Lynwood

Maywood

Montebello

Norwalk

Paramount

Pico Rivera

Santa Fe Springs

Signal Hill

South Gate

Vernon

Whittier

County of Los Angeles

Port of Long Beach

Mr. Mark Stanley
Rivers and Mountains Conservancy
100 N. Old San Gabriel Canyon Road
Azusa, CA 91702

Dear Mr. Stanley

Subject: Support for the Long Beach Municipal Urban Stormwater Treatment (LB-MUST) Project for the Proposition 1 Lower Los Angeles River Grant Program

The Gateway Cities Council of Governments (GCCOG) representing the 27 cities of southeast Los Angeles with a population of 2.1 million is very excited to support the Long Beach Municipal Urban Stormwater Treatment (LB-MUST) Project application for funding construction from the Proposition 1 Lower Los Angeles River Grant Program through the San Gabriel and Lower Los Angeles Rivers and Mountains Conservancy.

The GCCOG has been an active leader in multi-benefit projects along the LA River, with a focus on transportation and livability improvements in disadvantaged communities. We are strong proponents of open space and park projects that also achieve water conservation, stormwater benefits, social and health benefits, and restore wildlife within the corridors.

The project will to divert contaminated stormwater from entering the Los Angeles River for the purposes of irrigating local open green space. Improving recreational water quality along the LA River and regions parks is a wonderful enhancement to our communities.

The LB MUST project corrects several obstacles which include:

- Providing connections and enhancements to the LA River Regional Trail.
- Provides coastal wetlands for migratory birds and native plant and wildlife
- Modifies the existing blighted vacant lots that are inaccessible with active recreation for our communities which enhances safety, our surroundings and quality of life.

We believe the LB-MUST project is worthy of Proposition 1 Lower Los Angeles River Grant Program Funding due to its proposed watershed-appropriate landscaping to support wildlife habitat and mitigate the historical adverse environmental effects within the proposed project area. Educational features are planned along the LB-MUST facility's grounds, buildings and trails, and within the future wetlands to inform the public of the consequences of ignoring what enters the storm drains and pollutes the City's waterways. Given the limited availability of open space and the continued need to use alternative sources of water, it is my sincere hope that the RMC will consider funding this worthwhile project.

If you have any questions, please contact me at (562) 663-6850.

Sincerely,

A handwritten signature in blue ink, reading "Nancy Pfeffer". The signature is fluid and cursive, with the first name "Nancy" and last name "Pfeffer" clearly distinguishable.

Nancy Pfeffer
Executive Director



October 11, 2018

Mr. Mark Stanley
Rivers and Mountains Conservancy
100 N. Old San Gabriel Canyon Road
Azusa, CA 91702

Dear Mr. Mark Stanley,

Subject: Support for the Long Beach Municipal Urban Stormwater Treatment (LB-MUST) Project for the Proposition 1 Lower Los Angeles River Grant Program

As the Executive Officer of the Gateway Water Management Authority (GWMA), the State-recognized agency for integrated water resources management in the Gateway Region, we are excited to support the Long Beach Municipal Urban Stormwater Treatment (LB-MUST) Project (*including tributary partner agencies: County of Los Angeles, Signal Hill, Lakewood, Paramount and Compton*) application for funding from the Proposition 1 Lower Los Angeles River Grant Program through the San Gabriel and Lower Los Angeles Rivers and Mountains Conservancy.

As you know, the GWMA has been an active leader in multi-benefit projects throughout the Gateway Region, with an additional focus on watershed improvements in disadvantaged communities. We are strong proponents of projects that combine open space and park improvements with water conservation, stormwater benefits, social and health benefits, and restore wildlife within the corridors.

The potential to divert contaminated stormwater from entering the Los Angeles River for the purposes of irrigating local open green space is truly a magnificent plan. Improving recreational water quality along the Los Angeles River and the Gateway Region's parks is a wonderful enhancement to our communities.

In addition to watershed benefits, the LB-MUST project corrects several additional obstacles which include:

- Providing connections and enhancements to the LA River Regional Trial.
- Provides Coastal Wetlands for migratory birds and native plant and wild life

Lisa Rapp (Lakewood), Board Chair • Adriana Figueroa (Paramount), Vice-Chair • Kelli Tunnicliff (Signal Hill), Secretary/Treasurer
Proudly serving Gateway cities and agencies in Southeastern Los Angeles County

Members: Artesia • Avalon • Bell • Bell Gardens • Bellflower • Central Basin Municipal Water District • Cerritos • Commerce • Cudahy • Downey • Hawaiian Gardens • Huntington Park • La Mirada • Maywood • Lakewood • Long Beach • Long Beach Water Department • Lynwood • Montebello • Norwalk • Paramount • Pico Rivera • Santa Fe Springs • Signal Hill • South Gate • Vernon • Water Replenishment District of Southern California • Whittier

With Technical Support From The Sanitation Districts Of Los Angeles County

- Modifies the existing blighted vacant lots that are inaccessible with active recreation for our communities which enhances the safety, our surroundings and quality of life.

We believe the LB-MUST Project is most worthy of Proposition 1 Lower Los Angeles River Grant Program Funding due to its proposed watershed-appropriate landscaping to support wildlife habitat and mitigate the adverse environmental effects within the proposed project area. The LB-MUST project provides multiple opportunities for green infrastructure to address the lack of safe open space adjacent to the Los Angeles River. Educational features are planned along the LB-MUST facility's grounds, buildings and trails, and within the future wetlands to inform the public of the consequences of ignoring what enters the storm drains and pollutes the City's waterways. Given the limited availability of open space and the continued need to use alternative sources of water, it is my sincere hope that the RMC will consider funding this critical project.

If you have any questions, please contact me at (626) 485-0338, gracekast.gateway@gmail.com.

Sincerely,



Grace J. Kast
Executive Officer

Gateway Water Management Authority

Lisa Rapp (Lakewood), Board Chair • Adriana Figueroa (Paramount), Vice-Chair • Kelli Tunnicliff (Signal Hill), Secretary/Treasurer
Proudly serving Gateway cities and agencies in Southeastern Los Angeles County

Members: Artesia • Avalon • Bell • Bell Gardens • Bellflower • Central Basin Municipal Water District • Cerritos • Commerce • Cudahy • Downey • Hawaiian Gardens • Huntington Park • La Mirada • Maywood • Lakewood • Long Beach • Long Beach Water Department • Lynwood • Montebello • Norwalk • Paramount • Pico Rivera • Santa Fe Springs • Signal Hill • South Gate • Vernon • Water Replenishment District of Southern California • Whittier

With Technical Support From The Sanitation Districts Of Los Angeles County



October 29, 2018

Mr. Mark Stanley
Rivers and Mountains Conservancy
100 N. Old San Gabriel Canyon Road
Azusa, CA 91702

Subject: Support for the Long Beach Municipal Urban Stormwater Treatment (LB-MUST) Project for the Proposition 1 Lower Los Angeles River Grant Program

Dear Mr. Stanley:

We are excited to support the Long Beach Municipal Urban Stormwater Treatment (LB-MUST) (including tributary partner agencies: County of LA, Signal Hill, Lakewood, Paramount and Compton) Project application for funding from the Proposition 1 Lower Los Angeles River Grant Program through the San Gabriel and Lower Los Angeles Rivers and Mountains Conservancy.

The City of Long Beach has been an active leader in multi-benefit projects along the LA River, with a focus on watershed improvements in disadvantage communities. We are strong proponents of open space and park projects that also achieve water conservation, stormwater benefits, social and health benefits, and restore wildlife within the corridors.

The potential to divert contaminate stormwater from entering the Los Angeles River for the purposes of irrigating local open green space is truly a magnificent plan. Improving recreational water quality along the LA River and regions parks is a wonderful enhancement to our communities.

The LB MUST project corrects several obstacles which include:

- Providing connections and enhancements to the LA River Regional Trail.
- Providing Coastal Wetlands for migratory birds and native plant and wild life
- Modifying the existing blighted vacant lots that are inaccessible with active recreation for our communities which enhances the safety, our surroundings and quality of life.

We believe the LB-MUST project is most worthy of Proposition 1 Lower Los Angeles River Grant Program Funding due to its proposed watershed-appropriate landscaping to support wildlife habitat and mitigate the adverse environmental effects within the proposed project area. Educational features are planned along the LB-MUST facility's grounds, buildings and trails, and within the future wetlands to inform the public of the consequences of ignoring what enters the storm drains and pollutes the City's waterways. Given the limited availability of open space and the continued need to use alternative sources of water it is my sincere hope that the RMC will consider funding this worthwhile project.

Sincerely,

Rex Richardson
Councilmember
City of Long Beach, 9th District



WANA • Wrigley Area Neighborhood Alliance, Inc.

October 30, 2018

Mr. Mark Stanley
Rivers and Mountains Conservancy
100 N. Old San Gabriel Canyon Road
Azusa, CA 91702

Dear Mr. Stanley:

RE: Community Support for the Long Beach Municipal Urban Stormwater Treatment ("LB-MUST") Project for the Proposition 1 Lower Los Angeles River Grant Program

The Wrigley Area Neighborhood Alliance ("WANA") supports the conceptual approach for the LB-MUST Project as presented in the City of Long Beach application. WANA members residing in the Wrigley District has been active participants in promoting multi-benefit projects along the Los Angeles River. We are strong advocates for integrated open space and park projects that also incorporate water conservation components, stormwater quality improvements and restore wildlife habitat within our Wrigley neighborhoods.

Furthermore, the LB MUST project incorporates several of the key neighborhood goals identified in the *Long Beach RiverLink Plan* adopted in 2002.

- Enhancement neighborhood access to the Los Angeles River Regional ("LARIO") Trial
- Expansion of habitat for migratory birds and native wildlife near the Willow Street Estuary
- Improved aesthetics incorporating the underutilized lots along Willow Street between Golden Avenue and the Los Angeles River
- Maximization of the use of storm water as a source of recycled water for irrigation and groundwater infiltration on the west side of Long Beach
- Establishment of a neighborhood gathering places that contribute to strengthening neighborhood bonds

If I can be of further assistance, please do not hesitate to contact me.

Very truly yours,

Joan V. Greenwood, President
Wrigley Area Neighborhood Alliance
Tel: (562) 355-8679
E-Mail: wringleyalliance@gmail.com

Project Discussion

The intent of the project packet is to help the proposed project remain consistent with the Lower Los Angeles River Revitalization Plan (LLARRP) and identify are of potential need where the committees and the Implementation Advisory Group (IAG) can be a resource to aid in finding funding, project partners, innovation, etc. Please answer the following questions as completely as possible given the stage of the project.

	PREWIC	PPC	PACEC	Question	Yes	No
General				1. Is the project consistent with the Lower Los Angeles River Revitalization Plan (LLARRP)?		
				Explain:		
Water				2. Does the project improve the overall water quality of the Los Angeles River?		
				Explain:		
				3. Does the project implement stormwater capture, water conservation practices, and/or other methodologies?		
				Explain:		
Environment				4. What environmental documentation (CEQA, NEPA, etc.) will be required or has been completed for the project?		
				Explain:		
				5. Are there any activities associated with the project that could impact the environment such as trash, pet waste, or chemicals?		
				Explain:		
				6. Will the project reduce or mitigate GHG emissions, improve air quality, and/or improve water quality?		
				Explain:		
Infrastructure				7. Will the project modify existing infrastructure such as flood control channels, open space, utility corridors, ROW land use, and transportation corridors?		
				Explain:		
Habitat & Ecosystem				8. Does the project create habitat or improve ecosystem health within the watershed?		
				Explain:		
				9. Is there native Los Angeles River riparian/wetland vegetation planned for the project?		
				Explain:		
Multi-Benefit				10. Does the project expand existing or create new multi-benefit opportunities?		
				Explain:		

**** Please see attached for Explanation/Information ****

	PREWIC	PPC	PACEC	Question	Yes	No
Funding				11. Is there potential funding the project proponent is seeking for the project?	✓	
				Explain:		
				12. Are there any funding gaps identified in the project?	✓	
				Explain:		
				13. Are there any identified partnerships?	✓	
				Explain:		
Policy				14. Are there plans for addressing safety and security within the project limits?	✓	
				Explain:		
				15. Is the project identified in any existing plans/policies (federal, state, local)?	✓	
				Explain:		
				16. Has the city in which the project will be located adopted any of the policies described in the Community Stabilization Toolkit ?	✓	
				Explain:		
Equity				17. Is there a group the project intends to serve (e.g., residents, youth, pedestrians, cyclists, artists, equestrians, bird watchers)?	✓	
				Explain:		
				18. Is the project in a disadvantaged community?	✓	
				Explain:		
				19. Will the project create any potential negative impacts on the local community?		✓
				Explain:		
Community Engagement				20. Does the project address the concerns of equity, displacement, and environmental justice?	✓	
				Explain:		
				21. Has the project been engaging the community in its development process?	✓	
				Explain:		
				22. Has the project consulted with the Native nations it intends to build land on?	✓	
				Explain:		
				23. Are there future plans for community engagement?	✓	
				Explain:		
				24. Has the project received feedback?	✓	
				Explain:		

1. Is the project consistent with the Lower Los Angeles River Revitalization Plan (LLARRP)?

The project is consistent with the LLARRP and will serve disadvantaged communities; provides urban greening along the Lower LA River; activates open space; provide wetlands; and have water quality features.

2. Does the project improve the overall water quality of the Los Angeles River?

The LBMUST program will improve water quality of the Los Angeles (LA) River by intercepting water runoff and reducing and/or eliminating pollution that would otherwise discharge into the LA River and spread onto City beaches and ocean waters.

3. Does the project implement stormwater capture, water conservation practices, and/or other methodologies?

The LB-MUST program intercepts, captures and treat polluted non-stormwater runoff and a percentage of the first flush of a storm flows generated within the Long Beach urban watershed (covering/treating over 12,000 acres) thereby preventing the transportation of pollution into the LA River.

4. What environmental documentation (CEQA, NEPA, etc.) will be required or has been completed for the project?

CEQA California Environmental Quality Act (CEQA) environmental document for the LB-MUST program has been completed. An Initial Study/Mitigated Negative Declaration (MND) was prepared and adopted by City Council on January 23, 2018. The NOD was filed shortly after.

5. Are there any activities associated with the project that could impact the environment such as trash, pet waste, or chemicals?

The project provides an opportunity to connect to the LA River Trail, water quality features, wetlands and greening. Littering and pet waste can be discouraged by providing trash receptacles.

6. Will the project reduce or mitigate GHG emissions, improve air quality, and/or improve water quality?

The project would improve the water quality by intercepting water runoff and reducing and/or eliminating pollution that would otherwise discharge into the LA River. The urban greening elements of the project will also help improve air quality.

7. Will the project modify existing infrastructure such as flood control channels, open space, utility corridors, ROW land use, and transportation corridors?

The project will activate open space that are currently blighted and underutilized within the transportation and utility corridors.

8. Does the project create habitat or improve ecosystem health within the watershed?

The project will create open space that will improve the ecosystem health within the watershed by intercepting and capturing water runoff and reducing and/or eliminating pollution that would otherwise discharge into the LA River and spread onto City beaches and ocean waters. It also contributes significantly towards the goal of restoring the LA River

by ways of creating and sustaining the wetlands with the waters and provides space for migratory birds and native plant and wild life.

9. Is there native Los Angeles River riparian/wetland vegetation planned for the project?

The LB-MUST Project intends to include significant amount of native plant palette for the planned wetlands. Embedding plants indigenous to Long Beach will facilitate the preservation of wild life. Birds, butterflies, and beneficial insects prefer native plants. Additionally, maximizing the use of native plants will facilitate saving water for other uses and maintenance would naturally be minimal as these are plants that are already adapted to the local environment.

10. Does the project expand existing or create new multi-benefit opportunities?

The Project is a multi-beneficial regional project that:

- Improves water quality
- Reduces pollution that would otherwise discharge into the LA River
- Provides urban greening along the Lower LA River
- Activates open space
- Provides wetlands; and have water quality features
- Serves disadvantaged communities.

11. Is there potential funding the project proponent is seeking for the project?

Yes, the project proponent is continuing to seek grants and partnerships to help fund the various components of the project. The project proponent is requesting for \$4M from the Rivers and Mountains Conservancy Proposition 1 Lower LA River Grant Program to help fund the expansion improvements at the East Banks of the LA River at Artesia Boulevard and at Willow Street.

12. Are there any funding gaps identified in the project?

Yes, there are funding gaps identified. The overall project is anticipated to cost \$150 million. Currently, the project has been funded \$31.3 million for the planning; design and construction of the treatment facility and filtration unit equipment; design and construction of the LB-MUST wetlands (near the Shoemaker Bridge).

13. Are there any identified partnerships?

Project partners include Caltrans, Port of Long Beach, Wilmore City Heritage Association, Rivers and Mountains Conservancy.

14. Are there plans for addressing safety and security within the project limits?

Yes, appropriate lighting and fencing would be included in the safety measures.

15. Is the project identified in any existing plans/policies (federal, state, local)?

The project is identified in the City of Long Beach's master plan, consistent with the City's Land Use & Urban Design Elements 2040 General Plan, the City's Sustainable City Action

Plan, and also consistent with the Gateway Cities Council of Governments Artesia Boulevard Master Plan.

16. Has the city in which the project will be located adopted any of the policies described in the Community Stabilization Toolkit?

Yes, the project will support existing workforce training programs and will be collaborating with the Conservation Corps of Long Beach.

17. Is there a group the project intends to serve (e.g. residents, youth, pedestrians, cyclists, artists, equestrians, bird watchers)?

The project will activate open space that will not only serve the nearby residential neighborhoods, but will also provide connection to the LA River Trail for pedestrians and cyclists.

18. Is the project in a disadvantaged community?

The project sites (East Bank of LA River at Artesia Boulevard and Willow Street) are located are in disadvantaged communities as identified using the CalEnviroScreen 3.0.

19. Will the project create any potential negative impacts on the local community?

It is not expected for the project to create potential impacts on the local community as it will activate underutilized, blighted areas, and have water quality features.

20. Does the project address the concerns of equity, displacement, and environmental justice?

Yes, the project sites are on publicly owned underused property that will not cause displacement. It will contribute toward open space by creating new wetlands. It will benefit areas that have been identified to have less than 2 acres of open space per 1,000 residents.

21. Has the project been engaging the community in its development process?

The project was presented at community events near the LA River, as well as at the city hall and city parks during the development of the feasibility study, master plan and environmental phases to inform the communities of the project and to solicit feedback from the public regarding their concerns. A small model was developed and presented at the community outreach events to facilitate the understanding of the LB-MUST Program and the treatment process. The feedback from the public was positive. People were excited that a project was going to be implemented to help clean up the LA River, provide greening, and improving the underutilized areas adjacent to the LA River.

22. Has the project consulted with the Native nations intends to build land on?

In compliance with AB 52, the City of Long Beach distributed letters to numerous Native American tribes notifying each tribe of the opportunity to consult with the City regarding the proposed project. The tribes were identified based on a list provided by the Native American Heritage Commission (NAHC), or were tribes that had previously requested to be notified of future projects proposed by the City. These letters were distributed on April 3, 2017. Two

tribal response letters were received by the City; the Gabrielino Band of Mission Indians – Kizh Nation provided a letter to the City dated May 2, 2017 requesting consultation regarding the proposed project. The Tongva Ancestral Territorial Tribal Nation also responded and requested additional information pertinent to the cultural resources analysis; this information was provided but no further correspondence or request for consultation was received.

23. Are there future plans for community engagement?

As the project continues to develop, there will be future opportunities for community engagement at community events. As part of the program management plan, there is a continued community engagement plan. The project is included in the West Long Beach Integration Plan, which shows the project is integrated with other planned projects (such as the I-710 Corridor Project and the Shoemaker Bridge Replacement Project).

24. Has the project received feedback?

As noted above, the project was presented at community events, at the city hall and city parks, and feedback from the public have been positive. People were excited that a project was going to be implemented to help clean up the LA River, provide greening, and improving the underutilized areas adjacent to the LA River.

Wilmore City Heritage Association, a non-profit corporation that was formed to improve, preserve and promote Long Beach's historic district, has shown their support for the project. They were recently awarded a grant that would help fund a phase of the project which consists of design and construction of a bio-swale that ties into the LB-MUST project.

LOWER LA RIVER

IMPLEMENTATION ADVISORY GROUP MEETING

MAY 22, 2019



AGENDA

- Committee Meeting Summary
- Discussion: Project Review
- Project Discussion
 - Parque dos Rios
 - River Ranger Program
 - LA River Master Plan Update
 - LB MUST
- RMC Update
- Open Forum/Public Comment
- Next Steps



IAG Project Review Process

Generally, this process will be used to identify plans, concepts, projects, or programs (Projects) that are located along the Lower LA River corridor, and then review them for consistency with the Lower Los Angeles River Revitalization Plan (LLARRP).

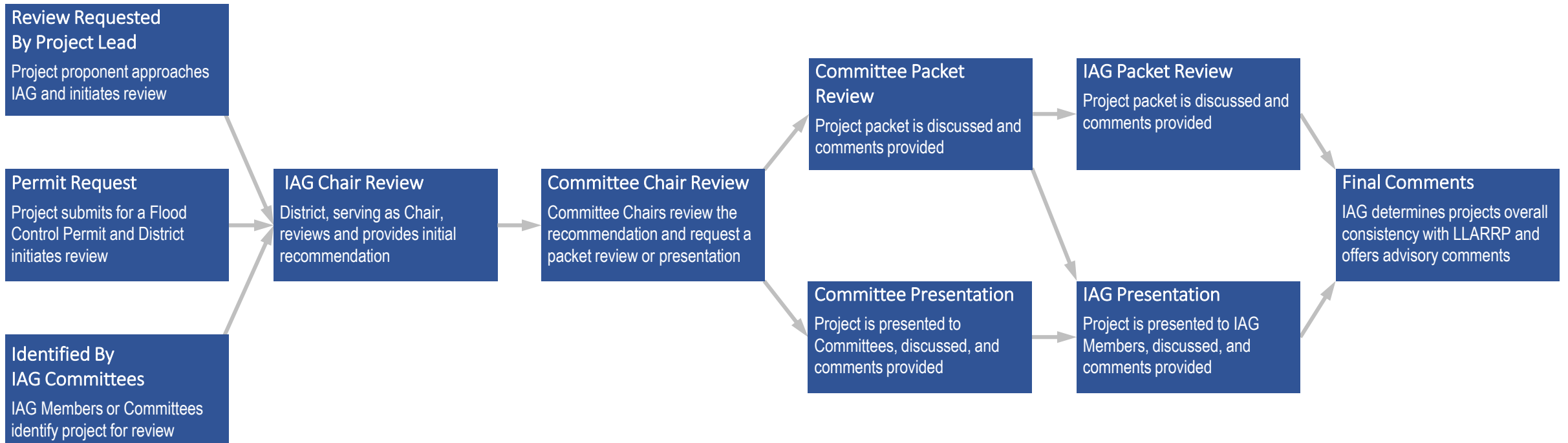
1 » Project Identification

2 » Project Review

3 » Committee Meeting

4 » IAG Meeting

5 » IAG Comments





QUESTIONS: PARQUE DOS RIOS

LOS ANGELES RIVER RANGER PLAN



Lower LA River IAG Meeting

May 22, 2019



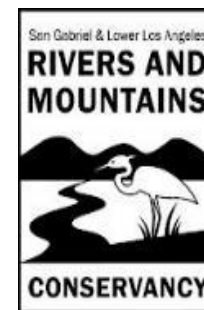
Agenda

- » **Introductions & Project Overview**
- » **Outreach Results**
- » **Program Framework**
- » **Next Steps**

- » Planning Process led by: Watershed Conservation Authority (WCA) and Mountains Recreation and Conservation Authority (MRCA)
- » Funded by: San Gabriel and Lower Los Angeles Rivers and Mountains Conservancy (RMC) and Santa Monica Mountains Conservancy (SMMC) through Proposition 1



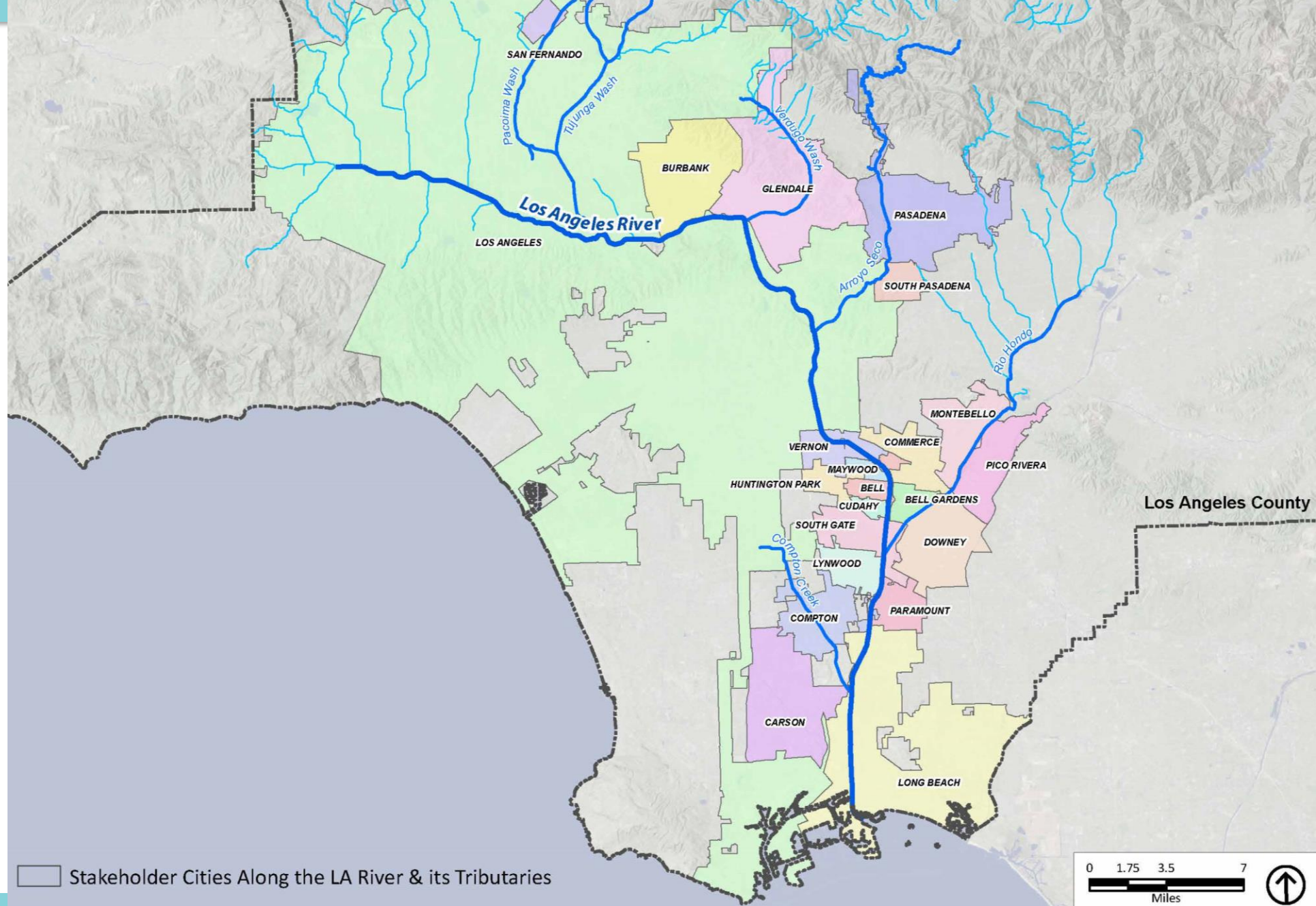
Mountains Recreation &
Conservation Authority



AB-1558 (C. Garcia)

Los Angeles River: River Ranger Program

- » Requires development of a river ranger program to provide a network of river rangers who assist the public at sites along the Los Angeles River and its tributaries
 - Establish a Los Angeles River identity.
 - Improve public safety for visitors.
 - Foster collaboration among those with jurisdiction over the River.
 - Protect parks, open space, and other public space.
 - Engage communities in the protection and preservation of the River and its resources.
 - Promote diversity, inclusion, and equal access.
 - Monitor physical conditions, environmental health, and development of green space along the River



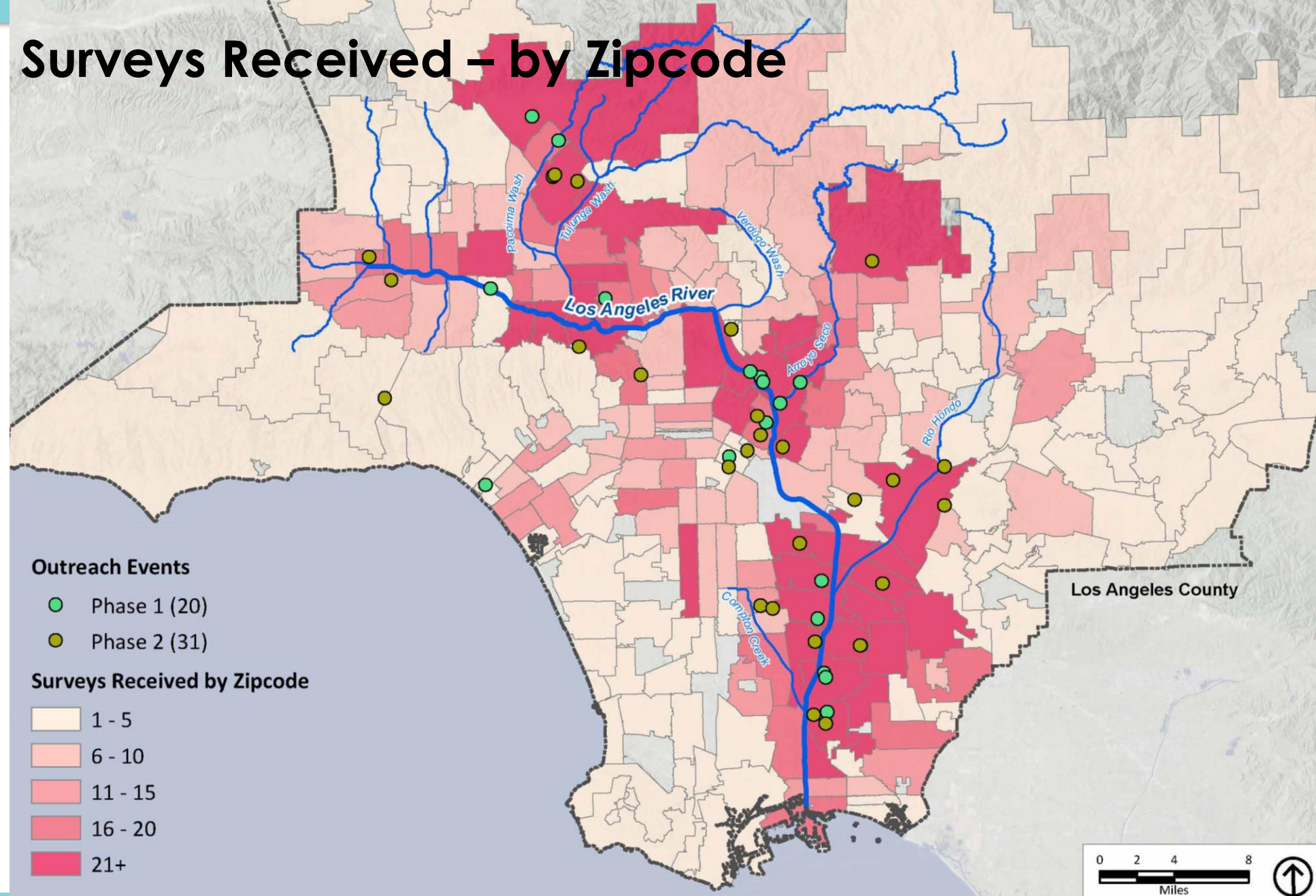
NGO Participation-Outreach

- » Amigos de los Rios
- » Arroyo Seco Foundation
- » Conservation Corps of Long Beach
- » FOLAR
- » From Lot to Spot
- » LA Conservation Corps
- » LA County Bike Coalition
- » Mujeres de la Tierra
- » North East Trees
- » Pacoima Beautiful
- » River LA

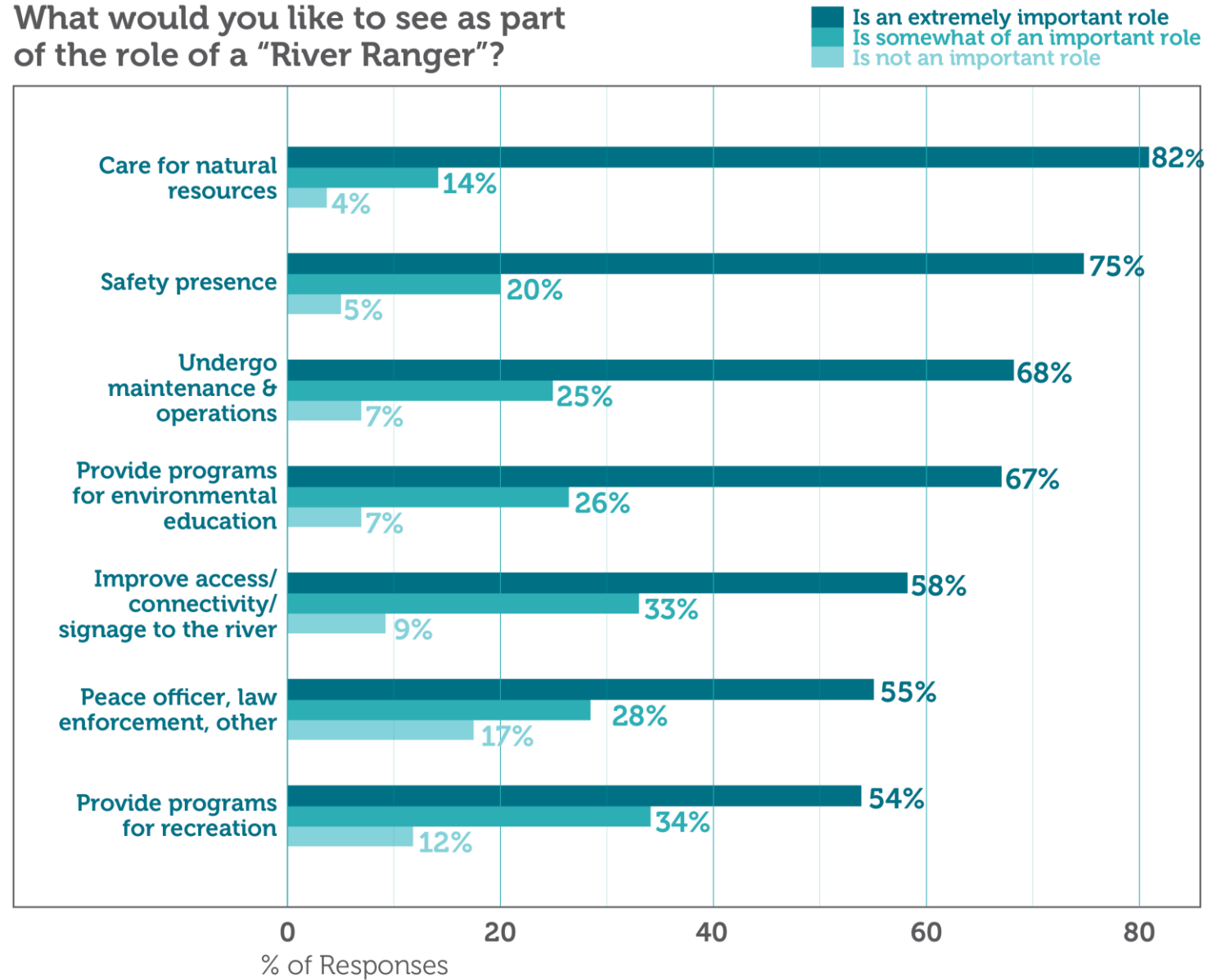


- » The River Project
- » Trails 4 All
- » Tree People

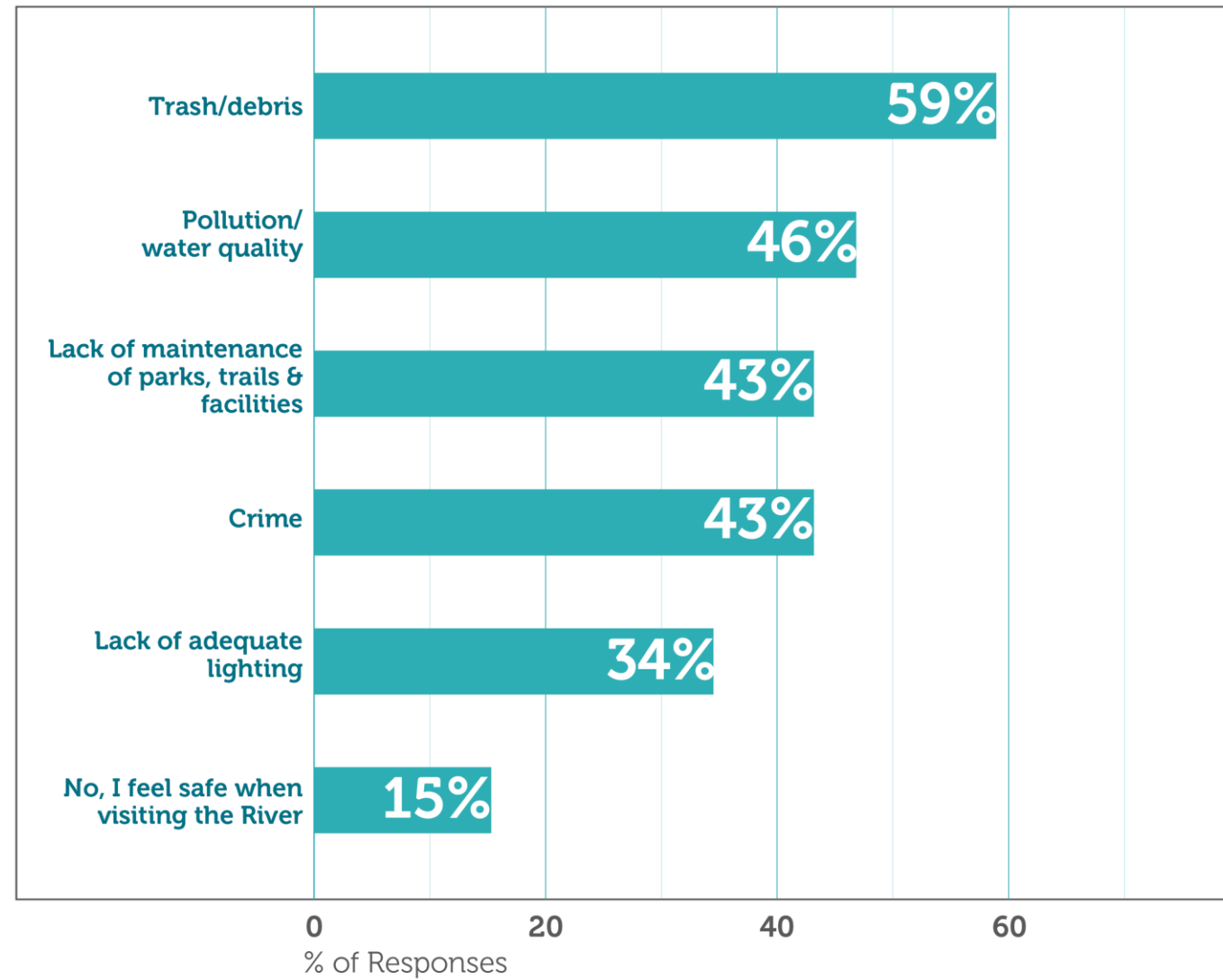
Surveys Received – by Zipcode



What would you like to see as part of the role of a "River Ranger"?



Do you have any safety concerns when visiting the River?



Guiding Principles

- » Maintenance and Resource Management
- » Recreation, Interpretation and Education Programs
- » Outreach and Engagement
- » Public Safety
- » Administration and Coordination



Urban Conservation Corps, program funded by RMC focusing on education and youth outreach



Program Staff

» Sworn Peach Officer Rangers

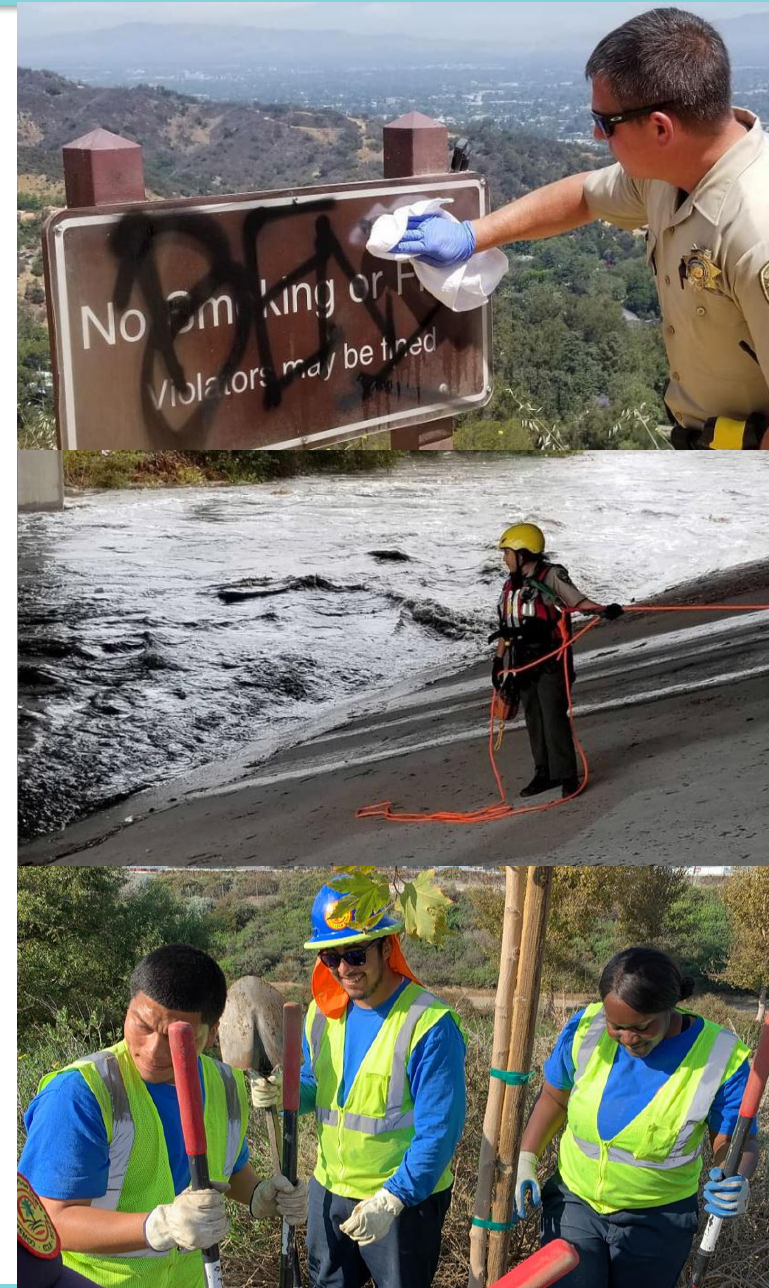
- Multi-faceted rangers

» Program Staff

- River Safety & Maintenance Specialist
- Interpretive & Recreation Specialist

» River Stewards

- State and Local Conservation Corps



Governance Model

- » Existing Entities as Governing Authority
- » Option 1: Cooperating Entities
 - Example: Park District or Qualifying Joint Powers Authority (JPA)
- » Option 2: Regional/Municipal Agency
 - Examples: County of Los Angeles and Cities
- » Option 3: Hybrid Model



Program Rollout: Establishing REACH Zones

» River Education, Adventure, Community, and Habitat

- Areas where Rangers and Program Staff may potentially provide services

» Purpose:

- Establish REACH Zones to assess managerial organization and sustainability of the Program, and refine the Program to best meet needs.



REACH Zone Program Criteria



First Year Implementation Costs

» Up to four REACH zones

PROGRAM COSTS	SWORN PEACE OFFICER RANGER			PROGRAM STAFF & CONTRACTED PARTNERS			RIVER STEWARDS	
	Chief	Deputy Chief	Ranger**	Administrator*** (Communications, Finance, and Program Management)	Interpretation & Recreation Specialist	River Safety & Maintenance Specialist	Corps Member	
Total FTE for Program	1	1	12	1	4	8	24	
Additional Seasonal Staff (~6 months)					4	8		
Total FTE per Tier	1	1	12	1	6	12	24	
Loaded Cost/FTE	\$280,800	\$195,520	\$2,021,760	\$158,080	\$636,480	\$1,272,960	\$1,075,200	
Contracted Partners							\$44,800	
Total Annual Personnel Cost	\$5,640,800							\$1,410,200
Total Annual Operating Expenses	\$900,200							\$225,050
Startup and Training Costs	\$1,321,600							\$330,400
TOTAL PROGRAM COST (YEAR 1)*	\$7,862,600							\$1,965,650

*Annual program cost anticipated to decrease in subsequent years as start up cost decrease

Next steps – Program Implementation

(Years 0 – 3)

- » Select and implement up to 4 REACH Zones
- » Secure Funding
- » Establish partnerships with NGOs/CBOs and educational institutions for River education
- » Monitor training and certification of staff
- » Evaluate REACH Zones
- » Develop a Homeless Outreach Action Plan



Thank you!



Contacts for Further Comments

Sally Gee, Rivers and Mountains Conservancy

Sgee@RMC.CA.GOV

Marybeth Vergara, Rivers and Mountains Conservancy

Mvergara@RMC.CA.GOV

Sarah Rascon, Mountains Recreation and Conservation Authority

Sarah.Rascon@MRCA.CA.GOV



UPDATE: LA RIVER MASTER PLAN UPDATE

LA RIVER MASTER PLAN UPDATE

- For Information:

- LARiverMasterPlan.org

- Contact Information:

- LARiver@dpw.lacounty.gov



COMMENT SESSION: LA RIVER MASTER PLAN UPDATE

Lower LA River – PREWIC Meeting



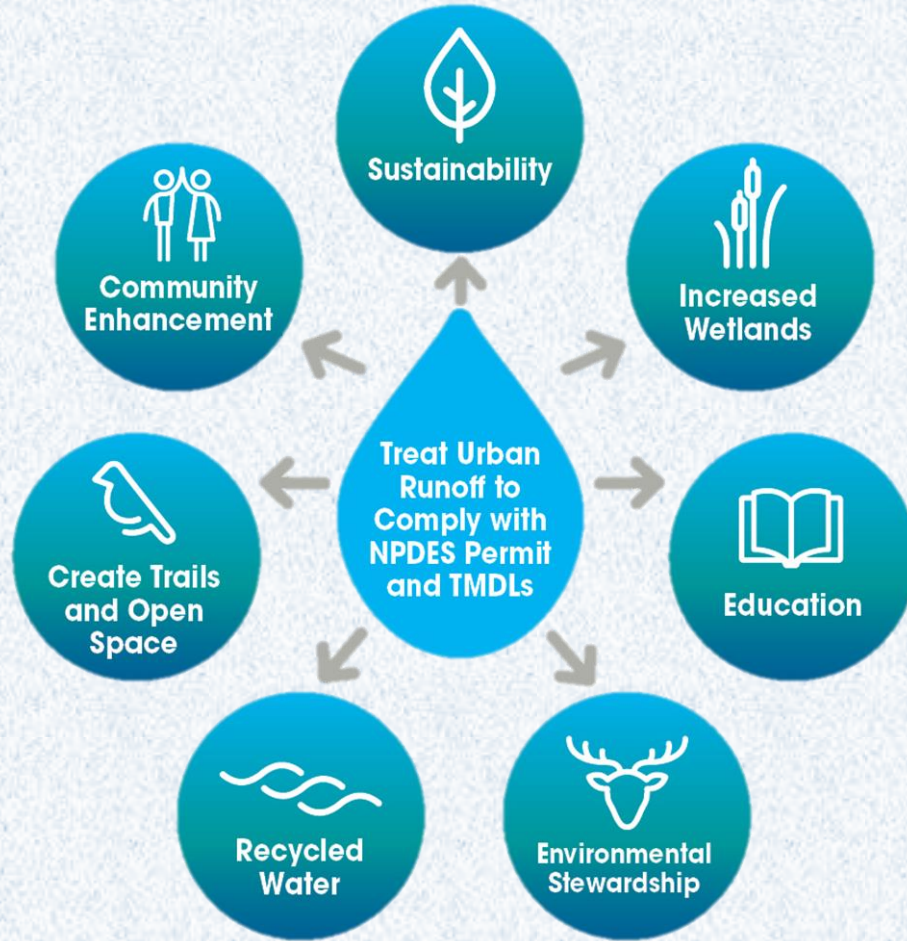
CITY OF
LONG BEACH

Long Beach Municipal Urban Stormwater Treatment (LB-MUST) Expansion

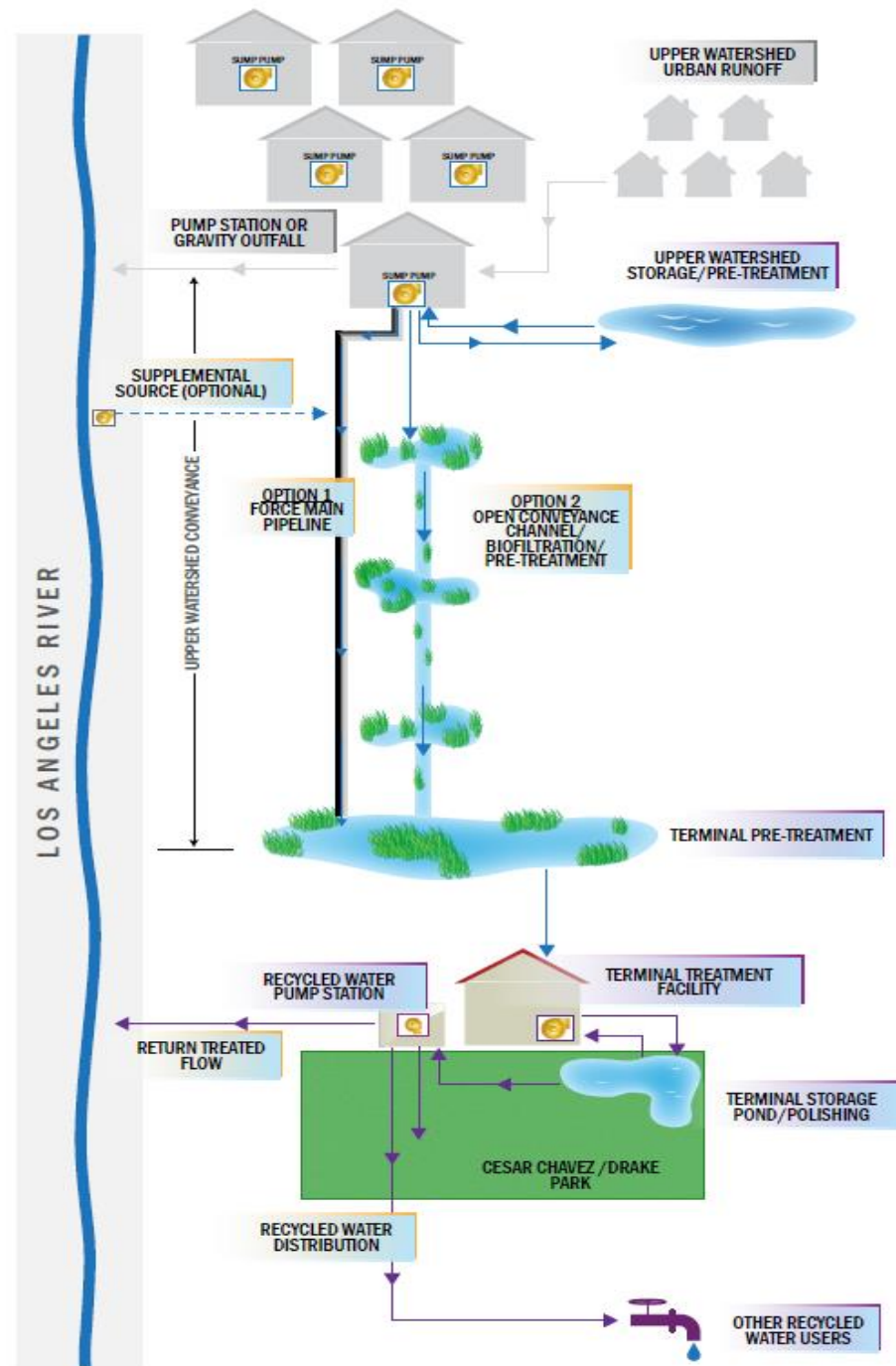
Wednesday, May 22, 2019



Project Purpose



- ✓ **Meet NPDES Permit Requirements**
- ✓ **Environmental Stewardship**
- ✓ **Wetland habitat**
- ✓ **Sustainability**
- ✓ **Alternate Water Source**
- ✓ **Community Enhancement**
- ✓ **Public Education**



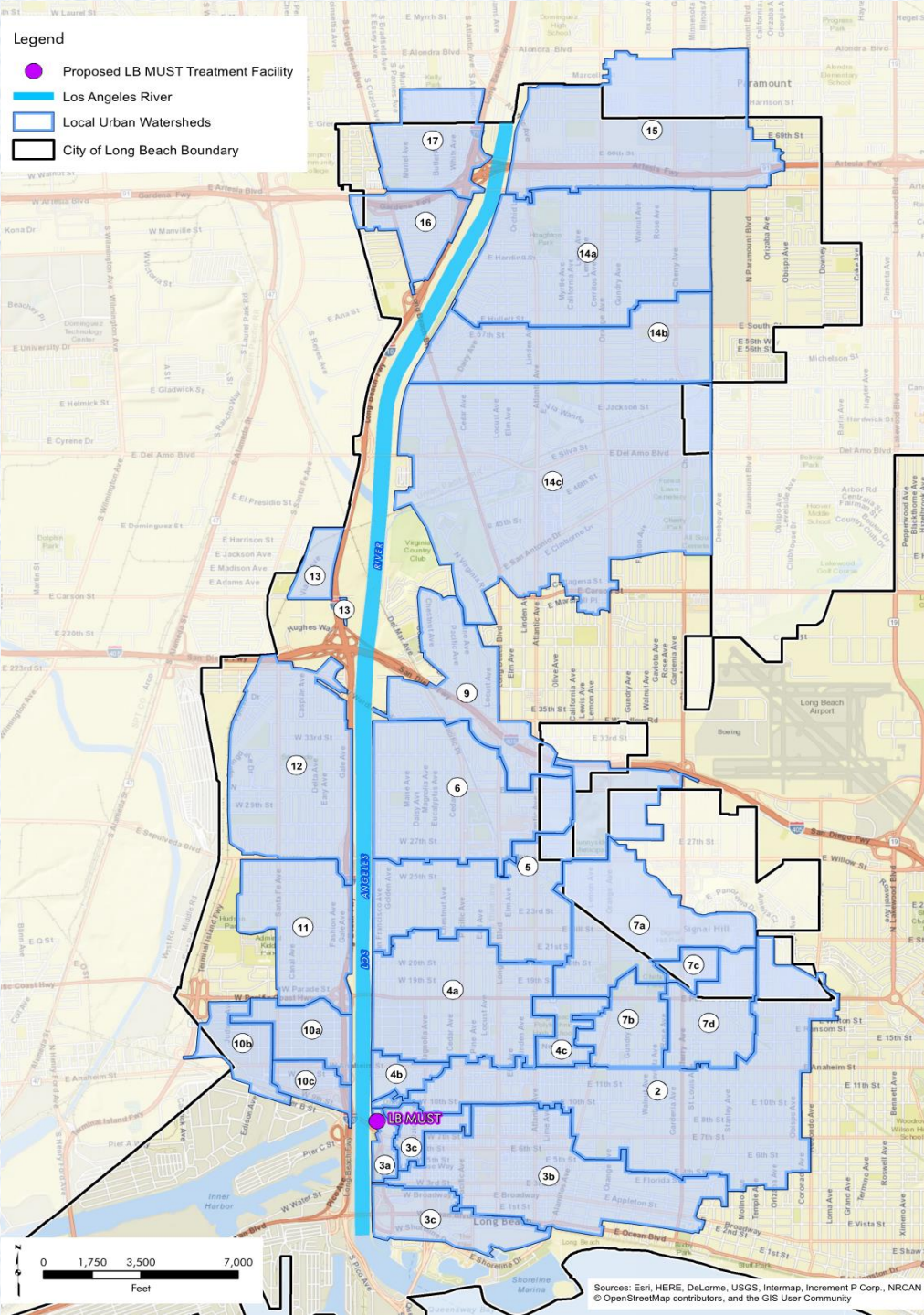
Project Overview



- **Capture/clean urban runoff in LA River watershed**
 - Approximately 12,300 acres (41% of Long Beach)
- **Connect to existing pump stations**
- **Series of linear wetlands**
 - Along 8 miles of the LA River (Shoemaker to SR-91)
- **Stormwater treatment facility**
 - Located near the Shoemaker Bridge
 - Future Educational Facility

Terminal Treatment Facility





LB-MUST

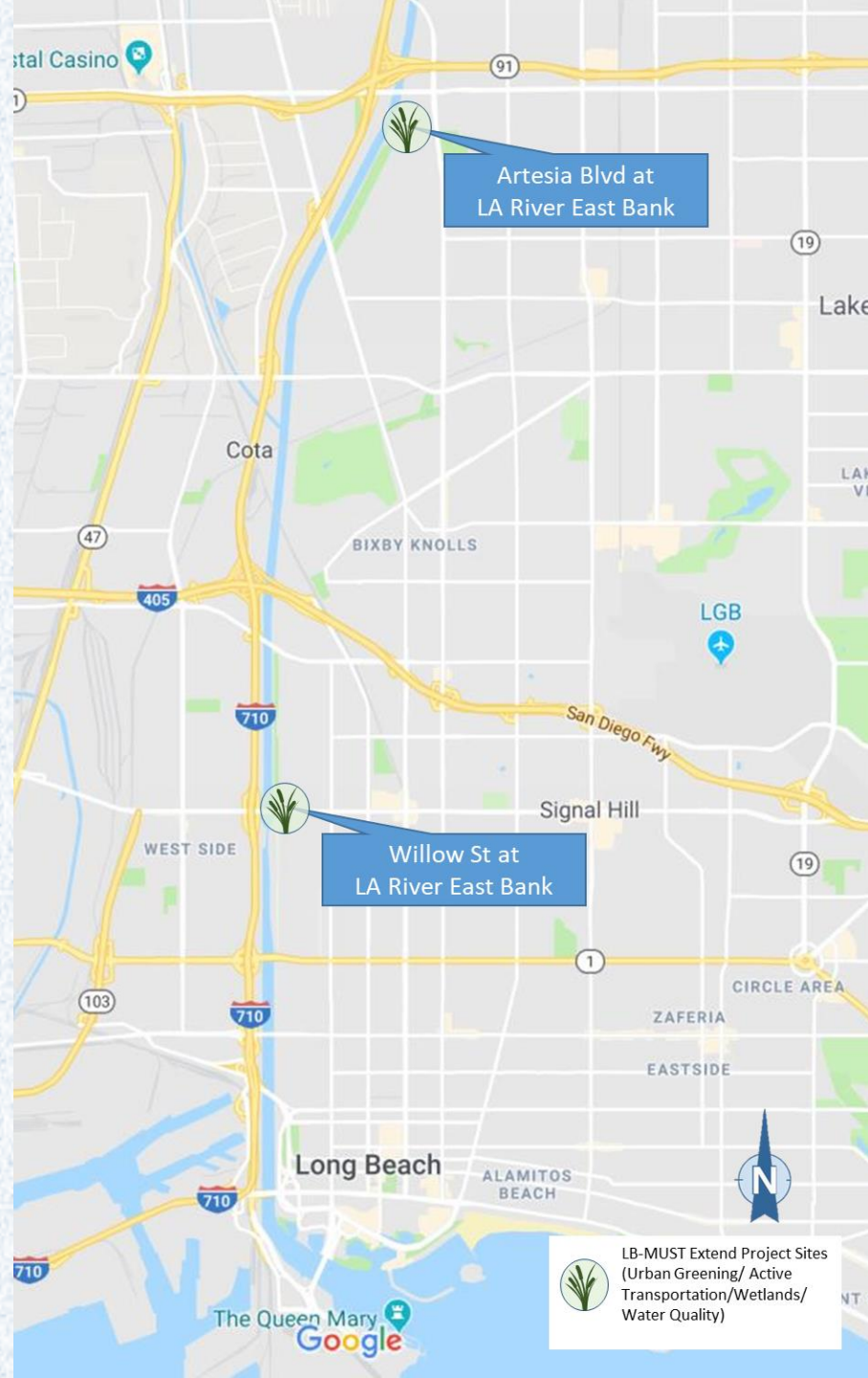


Multi-Beneficial Regional Project

- 👍 Improves water quality
- 👍 Reduces pollution that would otherwise discharge into the LA River
- 👍 Provides urban greening along the Lower LA River
- 👍 Activates open space
- 👍 Provide wetlands; and have water quality features
- 👍 Serves disadvantaged communities

Consistent with the RMC program and the Proposition 1 Objectives

Project Location



- ✓ **Artesia Boulevard at LA River East Bank**
- ✓ **Willow Street at LA River East Bank**

The sites are also recognized for their potential suitability for:

- ✓ *Wetlands restoration,*
- ✓ *Close proximity to the LA River,*
- ✓ *Flat and low topography,*
- ✓ *Available land of adequate size, and supportive public & resource agencies*
- ✓ *Consistent with Long Beach's vision along the LA River and Integration for the I-710 Corridor.*

Existing Condition at Artesia Blvd



Artesia Boulevard - LA River Trail

Existing Condition: Blighted and Inaccessible



Artesia Boulevard

Conceptual Planning at Artesia Blvd



Potential Urban Greening, Active Open Space, Wetlands & Water Quality Features



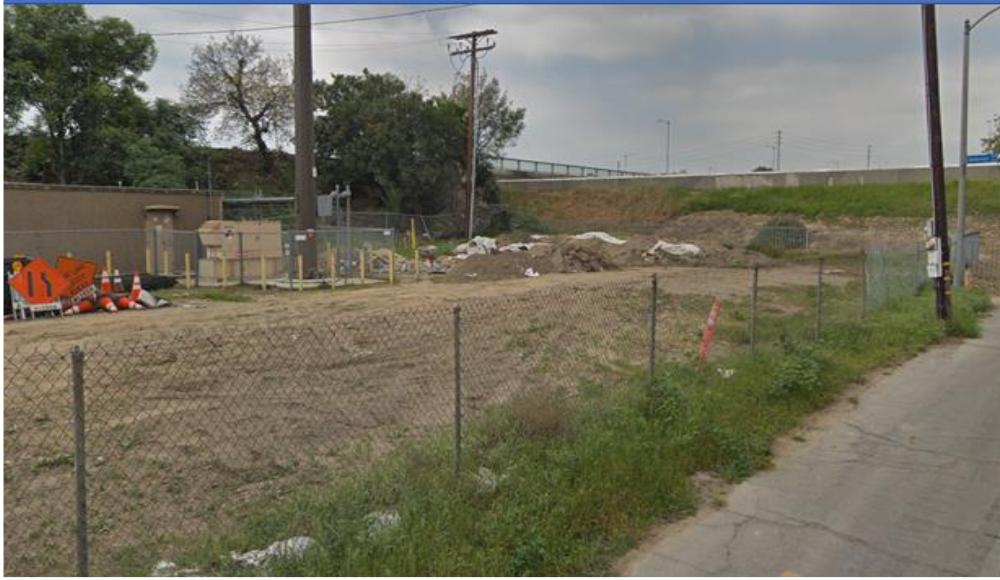
Artesia Blvd – East Bank Concept

Existing Condition at W. Willow Street



Willow Road - LA River Trail

Existing Condition: Blighted and Underutilized



Conceptual Planning at Willow Street



Potential Urban Greening, Active Open Space, Wetlands & Water Quality Features



Willow Street – East Bank Concept

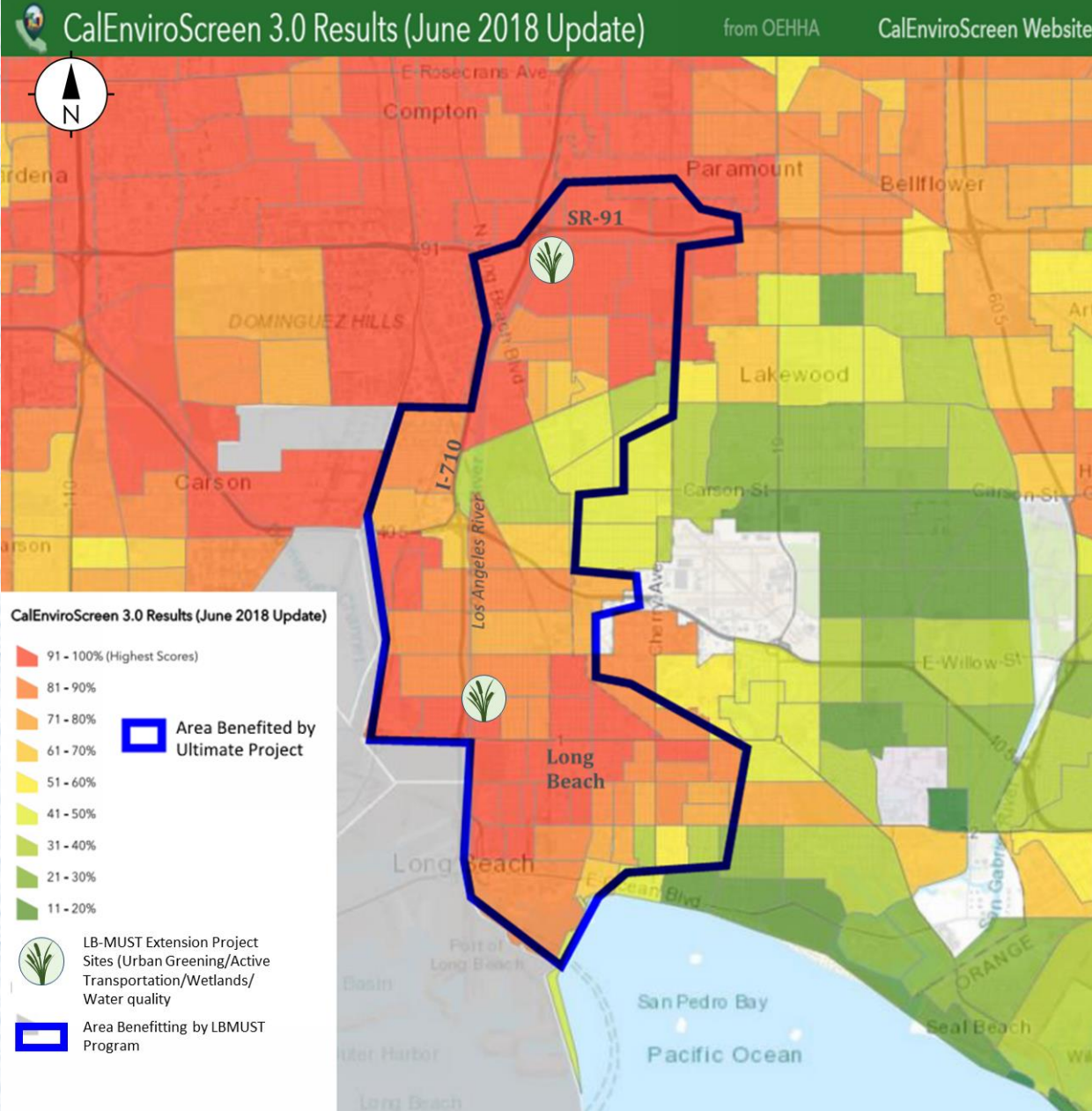
Conceptual Plan



Potential Urban Greening, Active Open Space, Wetlands & Water Quality Features



Environmental Justice



Provides relief to a densely populated area in the form of parks, wetlands and additional greening along the LA River.

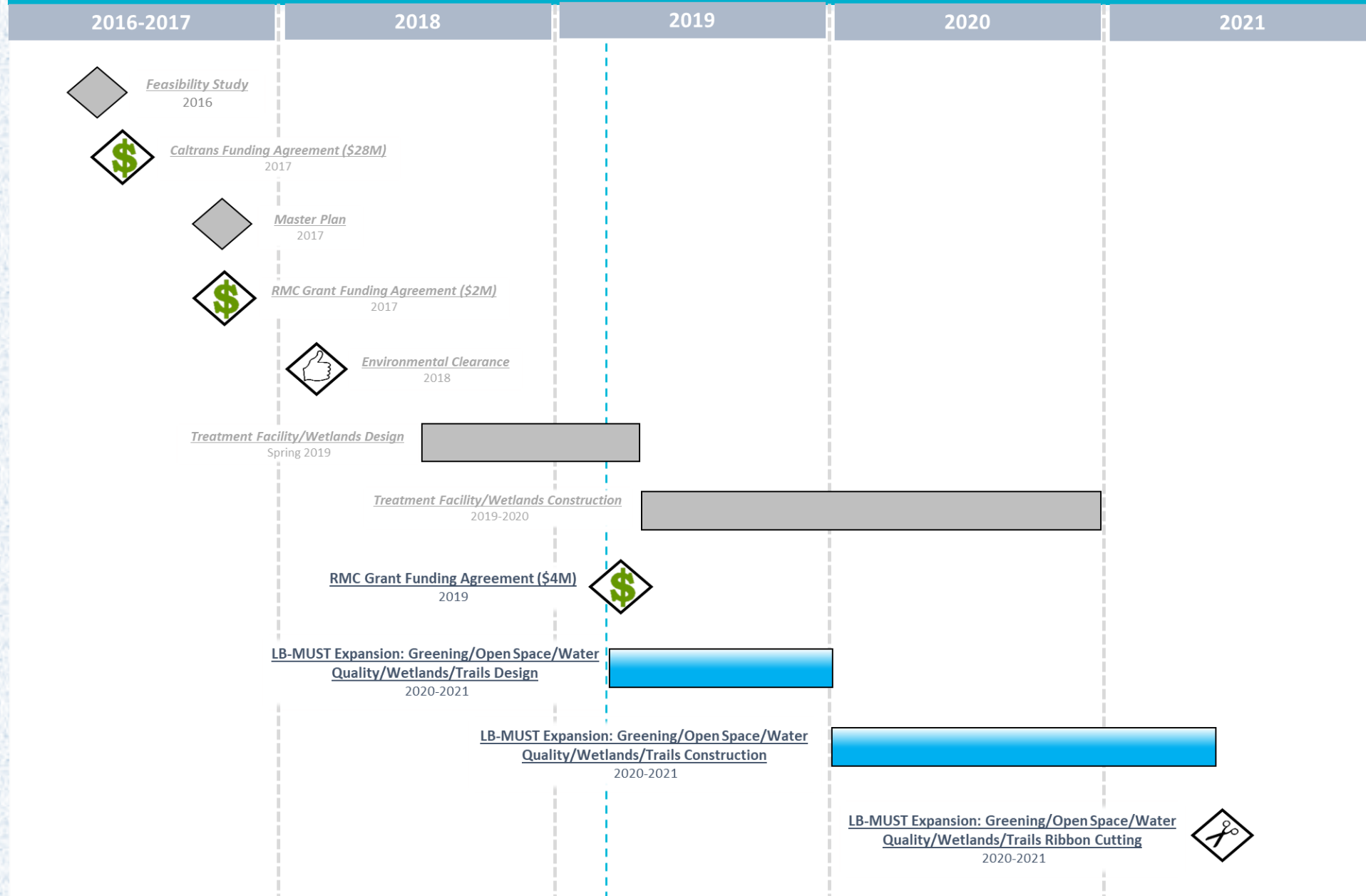
Artesia Boulevard

Located within a disadvantaged community.

Willow Street

Less than 2 acres of open space per 1000 residents
(per Parks for All Californians)

LB-MUST Schedule



LB-MUST Project – *Project Funding*

SUMMARY OF MATCHING FUNDING SOURCES:

<u>Funding Sources</u>	<u>Funding Intent</u>	<u>Funding Amount</u>
Caltrans	Conveyance and Treatment Facility	\$28,000,000
RMC	LBMUST Wetlands	\$2,000,000
Port of Long Beach	Stormwater filtration units	\$1,000,000
City of Long Beach – Local Funds	Planning	\$300,000
Total:		\$31,300,000

BUDGET REQUEST:

<u>Task</u>	<u>Site 1</u> <u>Artesia Blvd</u> <u>At LA River East Bank</u>	<u>Site 2</u> <u>Willow Street</u> <u>At LA River East Bank</u>	<u>Total</u>
1. Prog. Mgmt/Admin	\$100,000	\$100,000	\$200,000
2. Design	\$200,000	\$200,000	\$400,000
3. Construction	\$1,700,000	\$1,700,000	\$3,400,000
Total:	\$2,000,000	\$2,000,000	\$4,00,000

Lower LA River –PREWIC Meeting



CITY OF
LONG BEACH

Long Beach Municipal Urban Stormwater Treatment (LB-MUST) Expansion

Wednesday, May 22, 2019



RMC UPDATE



OPEN FORUM/PUBLIC COMMENT



NEXT STEPS



NEXT STEPS

- Committee Meetings

- July 2019

- Next IAG Meeting

- Date: August 21, 2019

- Time: 9 AM – 11 AM

- Location: LA County Department of Public Works Headquarters

- Conference Room A

WWW.LOWERLARIVER.ORG

THANK YOU!

