

Lower Los Angeles River Implementation Advisory Group Meeting

March 24, 2021 | 10 A.M. - 12:00 P.M.

Online Meeting/ Conference Call

AGENDA & SUMMARY

Purpose & Charge: Provide a public venue for discussion of proposed projects related to the Lower LA River, ensure proposed projects are consistent with the goals and objectives of the Lower LA River Revitalization Plan, and maximize multi-use opportunities and community benefits

I. Welcome & Introductions

II. Discussion Items

- LA River Master Plan Update

Mark Beltran (LA County Flood Control District) provided an update of the Los Angeles River Master Plan (LARMP) Update. The public comment period to review the LARMP Update and its Program Environmental Impact Report had recently been extended to May 13, 2021. Since its release, Public Works has been responding to various request/inquiries and provided presentations for various groups. Public Works is currently evaluating options for hosting virtual public info sessions dedicated to the LARMP Update. Additional details of these events will be forthcoming.

- Rio Hondo Confluence Area Project (RHCAP) Update

Lee Alexanderson (LA County Flood Control District) provided an update for the Rio Hondo Confluence Area Project. To recap, the site design concept report was completed in September 2020 which highlighted 12 opportunity areas, or concepts, at the confluence. Public Works is considering development of the Blue Park Concept, which involves channel low flow modifications, as well as opportunities for the public to access the channel. Additional information can be found at: <https://lowerlariver.org/riohondoconfluence/>.

- SELA Cultural Center Update

Joe Gonzalez (RMC) and Sam Gehry (Gehry Partners) provided the update on the SELA Cultural Center (Center). The project is currently wrapping up the design schematic phase and moving into the CEQA Environmental Impact Report process. Different forms of community outreach and engagement efforts includes digital outreach (Facebook campaigns, online surveys, and digital billboards), stakeholder meetings, and printed mailers. These engagement efforts will continue where focus will shift to presenting the schematic design of the Center.

- Project Information Packet (PIP) Update

Michelle Loekman (LA County Flood Control District) provided an update on the Project Information Packet (PIP). The PIP is a tool in which project proponents can use to submit to the Lower LA River IAG for review and ensure its consistency



with the Lower LA River Plan. The PIP website was recently published live on the Lower LA River site, and Michelle provided a user walkthrough showcasing its components and the process on how to submit projects. The PIP can be found at the following link: <https://pw.lacounty.gov/apps/llarpip/>

III. RMC Update

- LLARRP Reconvening Debrief

Suely Saro (RMC) provided the recap of the LA River Revitalization Reconvening Debrief. The event was held on December 10, 2020 and served as an opportunity to discuss the current context and projects identified in the Lower LA River Revitalization Plan, as well as give participants a chance to discuss their perspectives. The event consisted of participants breaking into several groups based on river segments for discussion of various needs within each reach. Key themes that stemmed from the group discussions included: engaging the community, preventing gentrification, and stabilizing communities, and creating healthy and safe spaces.

- On-going Grant Opportunities (Prop 1)

Joe Gonzalez (RMC) provided the update on the ongoing RMC Grant opportunities. Current available funding sources for the RMC grants includes \$30 million from Prop 1 (Water Bond) and \$30 million from Prop 68 (Park & Water Bond). Grants are dedicated to the Lower LA River corridor, and typically range between \$200,000 and \$2 million. Regional call for projects that were submitted in January are currently under review and RMC will make recommendations on those submitted through the summer.

- River Ranger Program

Suely Saro (on behalf of the Watershed Conservation Authority [WCA]) provided an update on the River Ranger Program. WCA is in the process of developing the pilot program at Reach 1 – located near the LA River and Rio Hondo Confluence. WCA is bringing on the Conservation Corps of Long Beach to assist with developing a River Safety Ambassador Program. WCA is also convening on an advisory committee that will provide feedback on the Pilot Program. The committee will feature a variety of stakeholders, including adjoining Cities, law enforcement, and NGOs.

IV. Open Forum / Public Comment

Carlos Campero of LA Conservation Corps inquired the status of the Compton Creek Working Group and whether it is convening again particular interest is with regards to Studio MLA's Alondra Gateway Park Project and its status. Joe Gonzalez will check in with RMC staff and get back to him.

V. Next Steps

- a. Possible Project Presentations for next IAG
 - i. South Gate Urban Orchard
 - ii. Trout Unlimited Channel Enhancements



- iii. Other Projects?
- b. IAG Meeting – June 23, 2021, 10 A.M. – 12 P.M.

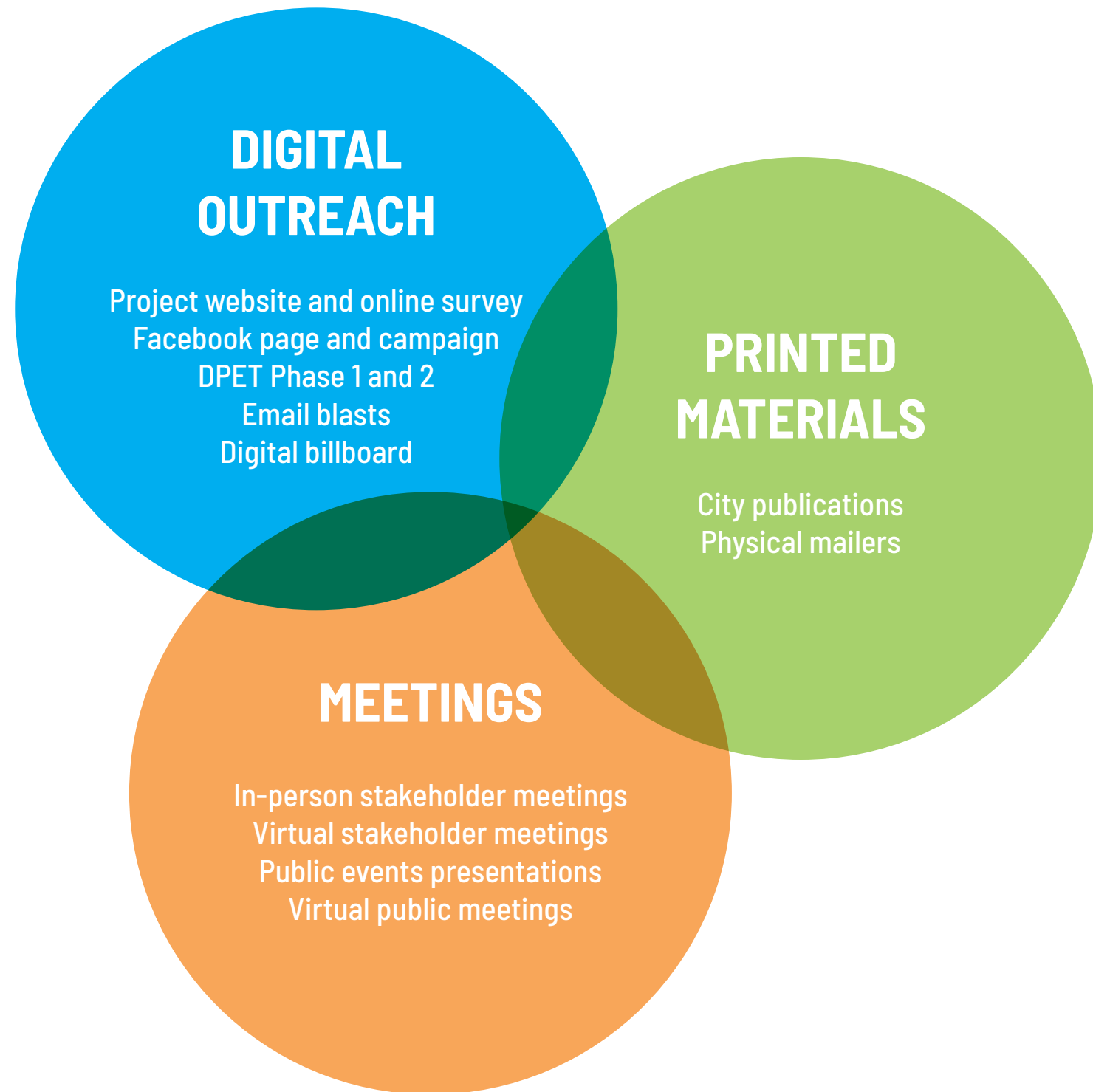


DRAFT



SELA CULTURAL CENTER

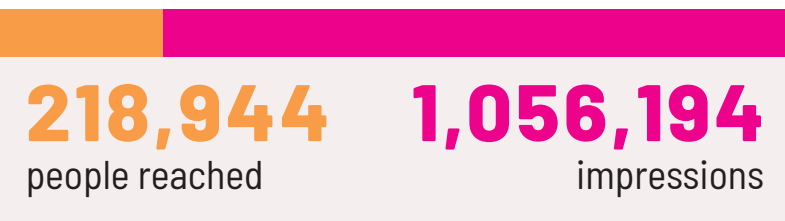
SELA CULTURAL CENTER ENGAGEMENT



PHASE 1 & 2 ENGAGEMENT

FACEBOOK

Phase 1: April 2020 - August 2020
Phase 2: December 2020 - March 2021



SELA Cultural Center
Sponsored · 🌐

Coming to Southeast LA: A new space to gather with friends, learn new skills, and be inspired.

SELA CULTURAL CENTER

Learn more about the SELA Cultural Center [Learn More](#)

SELA Cultural Center To learn more about the SELA Cultu...

👍👍👍 Paola Ramirez, Veronica Vallejo and 176 others · 5 Comments · 29 Shares

👍 Like 💬 Comment ➦ Share

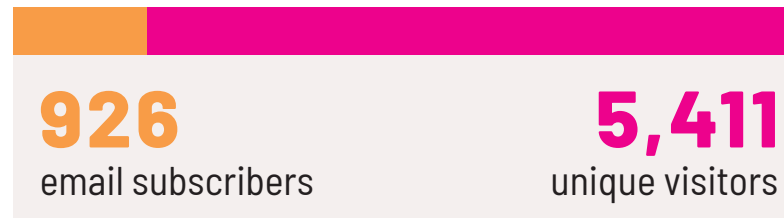
WEBSITE

March 2020 - Present

SELACULTURALCENTER.ORG



SUBSCRIBERS AND VISITS

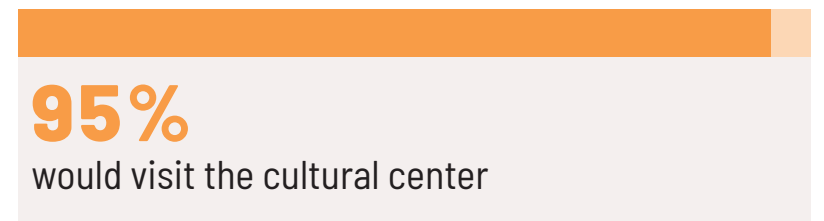


WEBSITE SURVEY

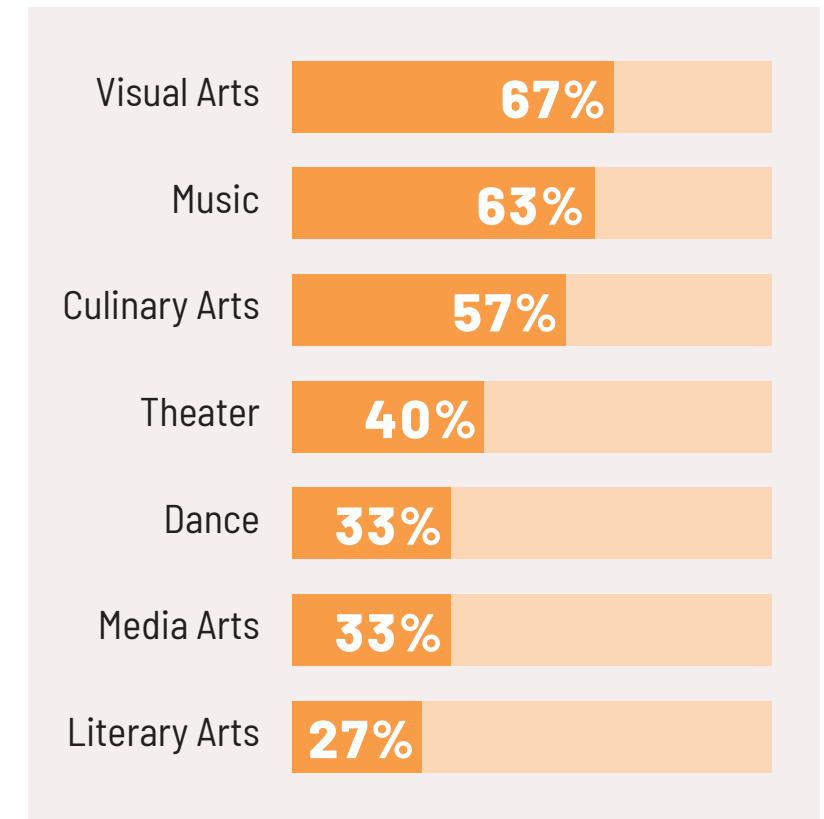


DIGITAL PUBLIC ENGAGEMENT TOOL (DPET)

Phase 1: April 22nd - April 30th 2020
Phase 2: July 6th - July 9th 2020



DESIRED ARTS PROGRAMS



PHASE 1 & 2 ENGAGEMENT

MAILERS

Distribution began February 27th 2021

STAY IN TOUCH WITH THE SELA CULTURAL CENTER!

Arising out of a community driven Lower LA River Revitalization Plan, the SELA Cultural Center will be a multi-disciplinary arts facility that combines world-class design and high-quality programming from across Los Angeles County with the vibrant culture of our community.

The SELA Cultural Center will support and showcase the many artistic talents of the Southeast Los Angeles community and provide a permanent place for the community to gather.

Make your voice heard about the types of programming you would like to see at the SELA Cultural Center. For more information or to share your feedback, visit us online at:

WE NEED YOUR INPUT
The design and programming of the SELA Cultural Center will be heavily influenced by you, your neighbors, and the SELA community.

SELACulturalCenter.org
 facebook.com/SELACulturalCenter
 CulturalCenterSELA@gmail.com
 (562) 521-9139

NO POSTAGE NECESSARY IF MAILED IN THE UNITED STATES

BUSINESS REPLY MAIL
FIRST-CLASS MAIL PERMIT NO. 7 SOUTH GATE, CA
POSTAGE WILL BE PAID BY ADDRESSEE

SELA CULTURAL CENTER
PO BOX 2372
SOUTH GATE, CA 90280-9925

¡MANTENTE EN CONTACTO CON EL CENTRO CULTURAL SELA!

Surgiendo de un plan de revitalización, influido por la comunidad, para la sección baja del Río de Los Angeles, el Centro Cultural SELA será un centro de artes multidisciplinario que combina un diseño de clase mundial y programación de alta calidad del Condado de Los Angeles con la cultura vibrante de nuestra comunidad.

El Centro Cultural SELA va a apoyar y resaltar el talento artístico de la comunidad del Sur Este de Los Angeles y proporcionará un lugar permanente en donde la comunidad se pueda reunir.

¡Haz que tu opinión se escuche sobre los tipos de programas que quisieras ver en el Centro Cultural SELA! Para más información o para compartir su comentarios, visítanos en línea al

NECESITAMOS TU APORTACIÓN
El diseño y programación del Centro Cultural SELA será influido mayormente por usted, sus vecinos, y los de la comunidad del sureste de Los Angeles (SELA).

SELACulturalCenter.org
 facebook.com/SELACulturalCenter
 CulturalCenterSELA@gmail.com
 (562) 521-8580

OUR VOICES. OUR COMMUNITY.
How can the SELA Cultural Center serve Southeast LA?
 Name: _____
 SELA Cultural Center should work with our community to provide more (Check all that apply):
 Art Literary arts
 Music Library or bookstore
 Dance Culturally specific events
 Theater Parks and open space
 Film Other: _____
 Culinary arts _____
 How can we contact you? _____

NUESTRAS VOCES. NUESTRA COMUNIDAD.
Cómo puede servir el Centro Cultural SELA al Sureste de LA?
 Nombre: _____
 El Centro Cultural SELA debe trabajar con la comunidad para proveer más: (Marque todo lo que corresponda):
 Arte Artes literarias
 Música Biblioteca o librería
 Danza Eventos culturales
 El Teatro Parques y campos abiertos
 Películas Otra: _____
 Arte culinaria _____
 ¿Cómo podemos contactarnos con usted? _____

1077
responses received

DIGITAL BILLBOARD

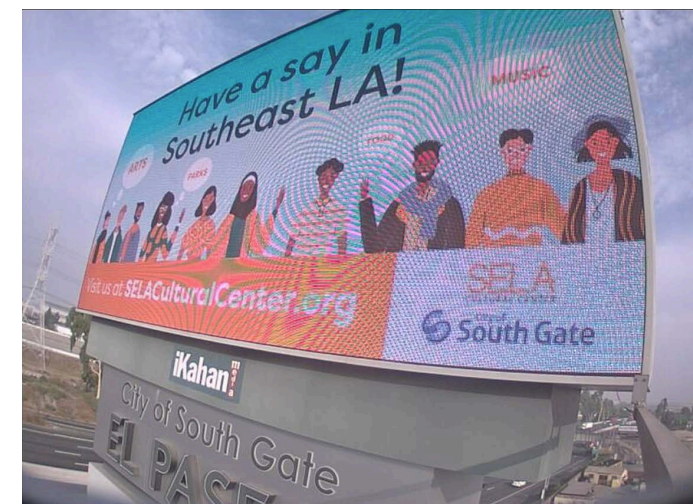
October 2020

Have a say in Southeast LA!

ARTS **MUSIC**
PARKS **FOOD**

Visit us at **SELACulturalCenter.org**

SELA CULTURAL CENTER
City of South Gate



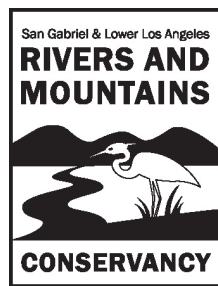
SITE PLAN



We would love to hear from you!
SELACulturalCenter.org
culturalcentersela@gmail.com

The San Gabriel & Lower Los Angeles Rivers and Mountains Conservancy RMC

Our mission is to preserve open space and habitat in order to provide for low-impact recreation and educational uses, wildlife habitat restoration and protection, and watershed improvements within our jurisdiction.



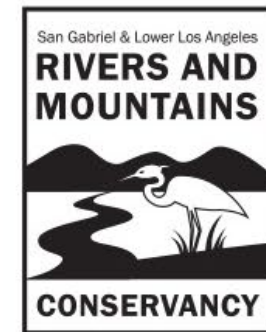
LLAR Reconvening!

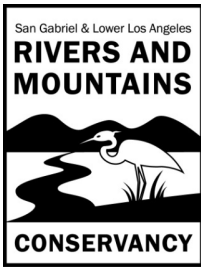
Virtual Lower Los Angeles River Working Group Reconvening

December 10, 2020 • 4:00 – 6:00 pm



ASSEMBLY MEMBER
Anthony Rendon
DISTRICT 63





LLAR Reconvening Key Themes

Following are key themes that emerged across the small group discussions:

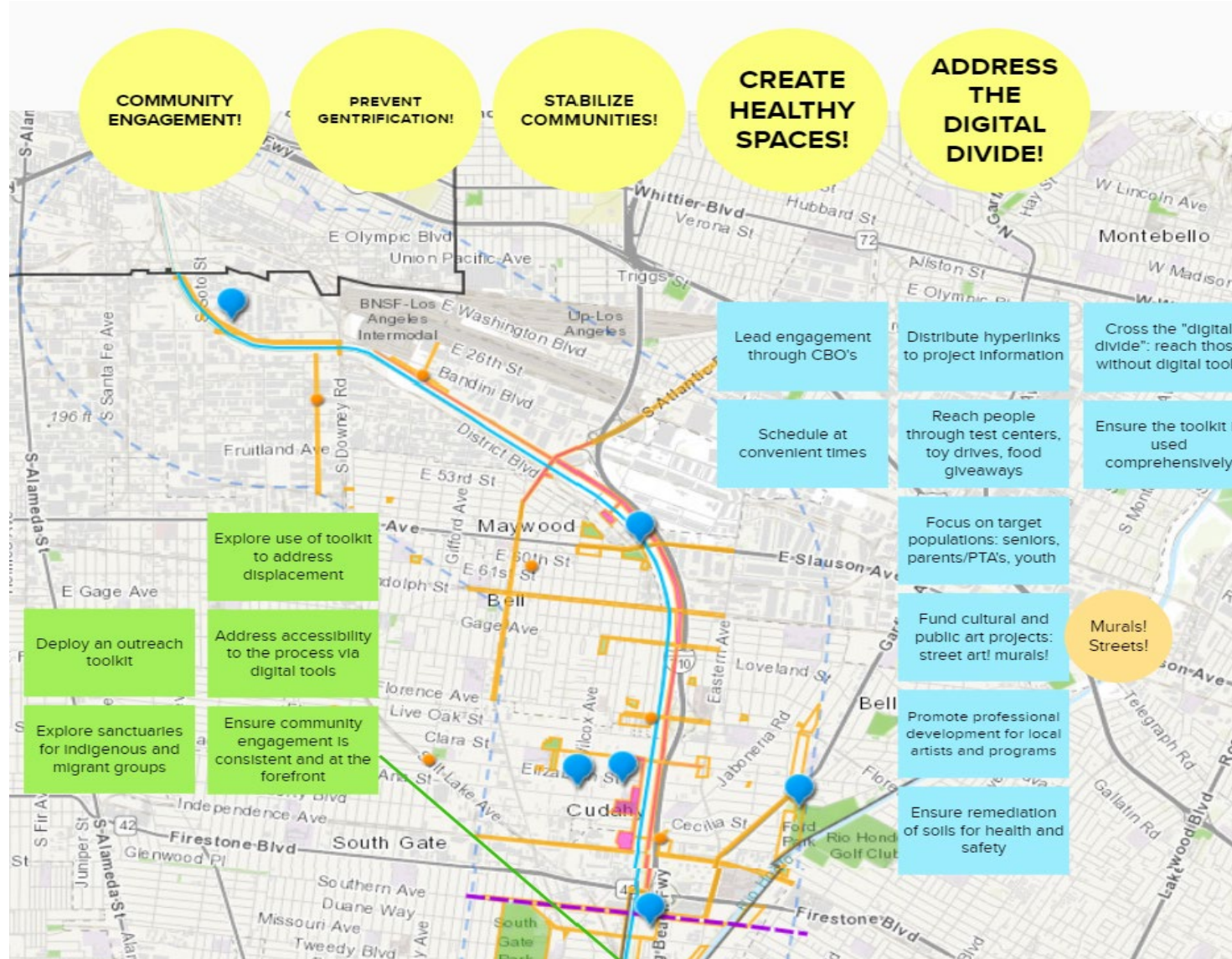
Engage the Community. Continued community engagement in current and future projects and programs on the river corridor is critical to ensuring these efforts respond to community needs. Creative and targeted engagement that is linguistically and culturally relevant and that bridge the “digital divide” with multiple techniques should drive these efforts.

Prevent Gentrification and Stabilize Communities. As river-oriented development is anticipated to influence gentrification along the river corridor, current economic conditions are also destabilizing communities. Project leaders and jurisdictions should proactively address these impacts through the Community Stabilization Toolkit.

Create Healthy and Safe Spaces. Projects should focus on creating healthy and active spaces that support community members’ health and well-being through parks, recreation, arts, and similar efforts. Additionally, remediation of unhealthy and unsafe conditions at specific locations should be part of project designs.



SUMMARY OF DISCUSSIONS – Upper Reach



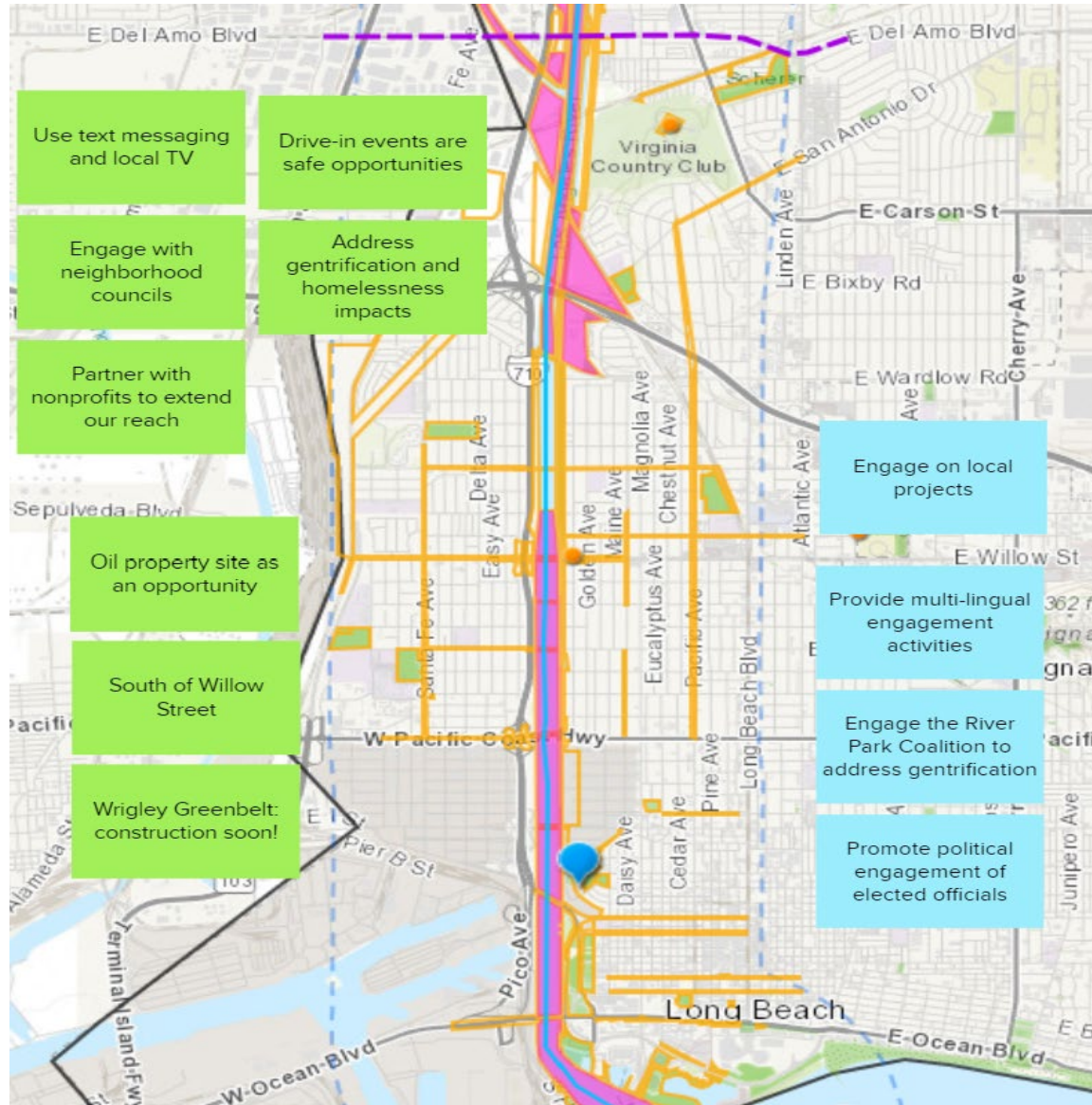


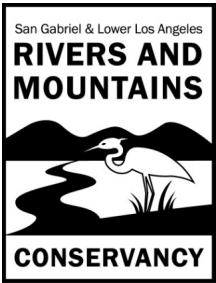
SUMMARY OF DISCUSSIONS – Middle Reach





SUMMARY OF DISCUSSIONS – Lower Reach





RMC Grant Program

Prop 1
"Water Bond"
+\$30 Million



Prop 68
"Park + Water Bond"
+\$30 Million



Implementation at least 80%

Planning up to 10%

Technical Assistance* up to 10%

*only Prop 68

Purpose:

- Developing urban recreation, watershed improvement, and habitat restoration projects
- Provide workforce opportunities and access for DACs
- *Grants typically between \$200k - \$2M*
- Small and Very Small Grants available for easier access
- Available next 2-3 years

More info: www.rmc.ca.gov

Email: info@rmc.ca.gov

LOS ANGELES RIVER RANGER PROGRAM ESTABLISHMENT PLAN

May 24, 2019



MISSION

The mission of the River Ranger Program is to foster connections between communities, agencies, and resources to promote safe, equitable usage and stewardship of the LA River and its tributaries as an activated and connected greenway that supports ecological, social, and recreational opportunities.

VISION

How the River Ranger Program and a revitalized river will impact communities in the future...

As the river is being revitalized and embraced as a community resource, the River Ranger Program will ensure safe, enjoyable and equitable experiences along the LA River and its tributaries by promoting equitable access, recreational and educational opportunities, community engagement, and resource protection along this vital resource. The River Ranger Program will provide opportunities to experience the River as a safe and inviting place, and to participate in its enhancement through volunteer or employment programs.



River Ranger Pilot Program

