

10 / STORY LOOPS

INTRODUCTION

WATER EDUCATION

ARTS + CULTURE

HEALTH + WELLNESS

EQUESTRIAN

ECOSYSTEM EXPLORATION

STORY LOOPS

STORY LOOPS

Five thematic Story Loops suggest routes between and connections of proposed and existing projects within the Rio Hondo Confluence Area. These Story Loops provide a variety of ways to engage the 12 concept projects and to distinguish unique experiences through Water Education, Arts and Culture, Health and Wellness, Ecosystem Exploration, and Equestrian activities. Loops suggest networks for pedestrians, bicyclists, and equestrian users, and range from short loops of 1-4 miles to long loops of 6-10 miles, which connect multiple projects for residents and visitors to navigate and curate their experiences throughout the region.

The engagement process utilized the Story Loops during the Online Community phase of the DPET to introduce the proposed projects and explain the various lenses through which one might visit several projects. Wayfinding postcards listing projects along each loop and illustrating potential routes helped to convey how community-members would be able to enjoy distinct activities along each loop. The Arts and Culture Story Loop was the most popular as reported by participants of the Online Community.

WATER EDUCATION

- Flood risk reduction, sediment deposition, water treatment and supply, climate change

ARTS + CULTURE

- SELA Cultural Center, sculpture park, art walls

HEALTH + WELLNESS

- Fitness stations, loops (1 mile, 3.1 miles and 6.2 miles), recreation amenities

EQUESTRIAN

- Regional loops (1 mile, 3.1 miles and 6.2 miles)

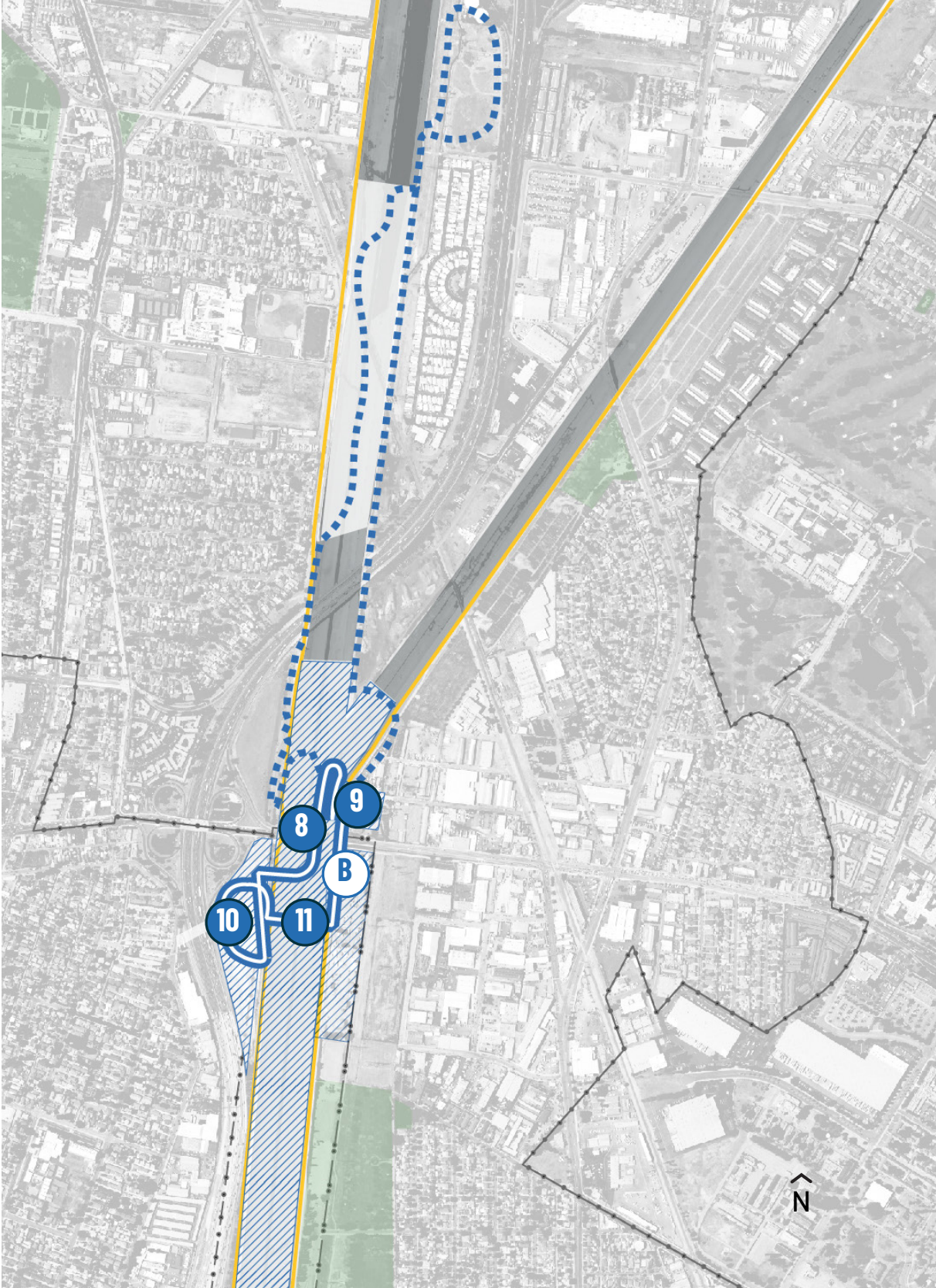
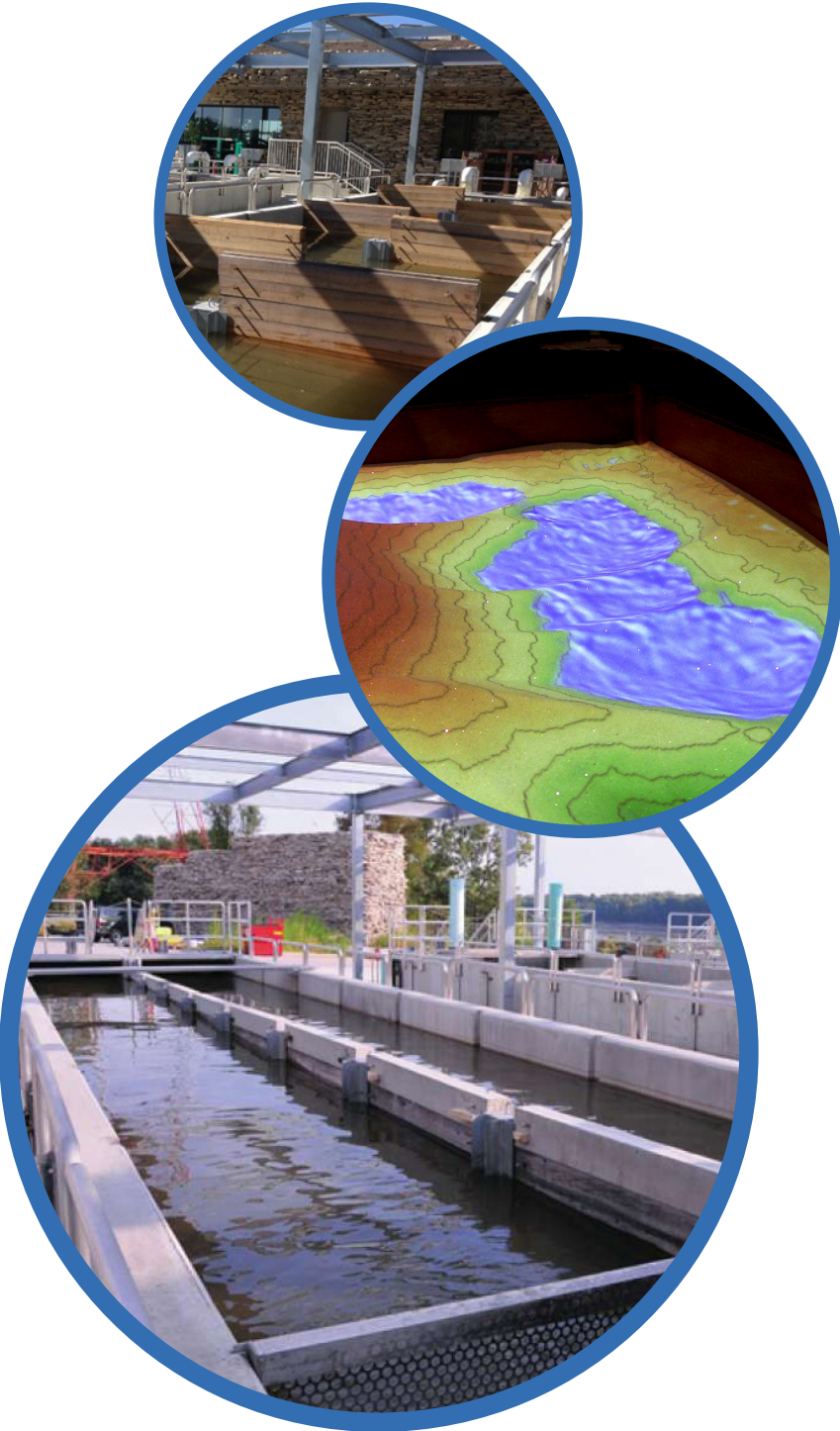
ECOSYSTEM EXPLORATION

- Native plants, lowland and upland planting, species observation, urban forest

STORY LOOPS

WATER EDUCATION

SHORT LOOP: ~1 mile
LONG LOOP: ~6.2 miles



Source: Top & Bottom-OLIN; Middle-Oliver Kreylos, UC-Davis KeckCAVES Courtesy National Science Foundation, 2012-13

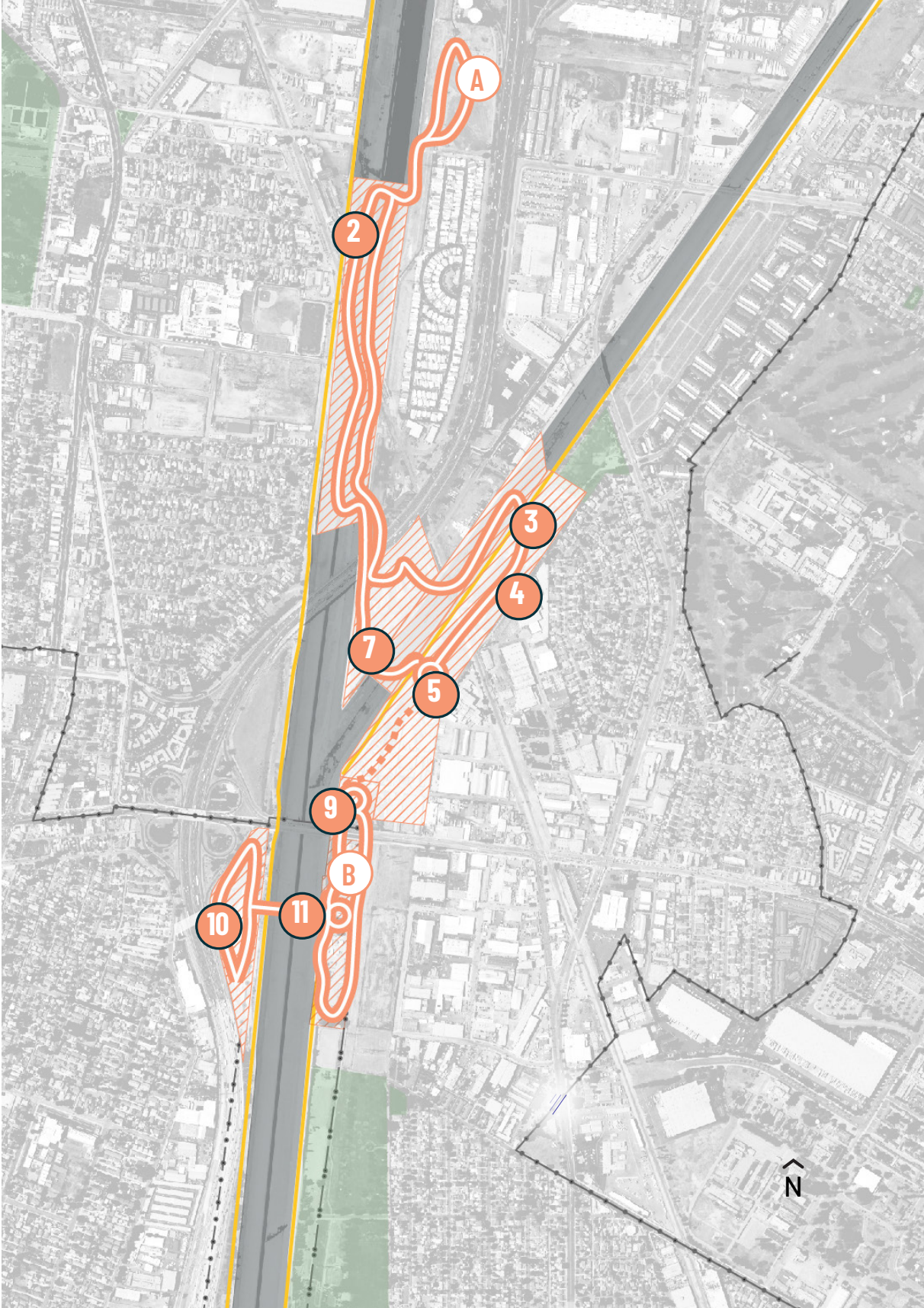
STORY LOOPS

ARTS + CULTURE

SHORT LOOP: ~1, ~3.1 miles

LONG LOOP: ~6.2 miles

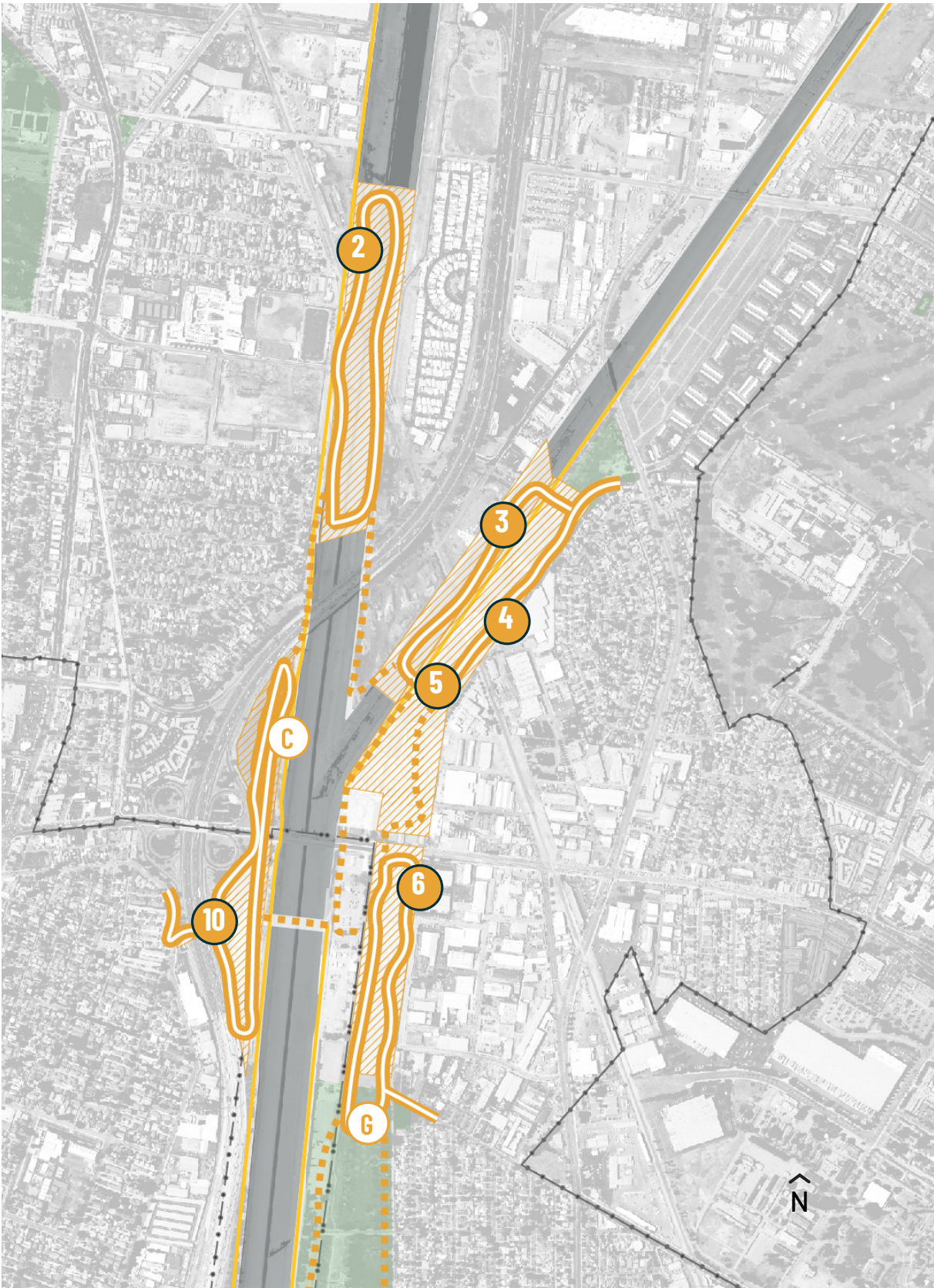
- 2 LA River Platform Park
- A Urban Orchard
- 3 Rio Hondo Platform Park
- 4 S Garfield Transmission ROW Park
- 7 Confluence Point Park
- 5 N Imperial Transmission ROW Park
- 9 Water Education Center
- B SELA Cultural Center
- 11 SELA Bridge Park
- 10 Imperial Wetlands



STORY LOOPS

HEALTH + WELLNESS

SHORT LOOP: ~1 mile
LONG LOOP: ~6.2 miles



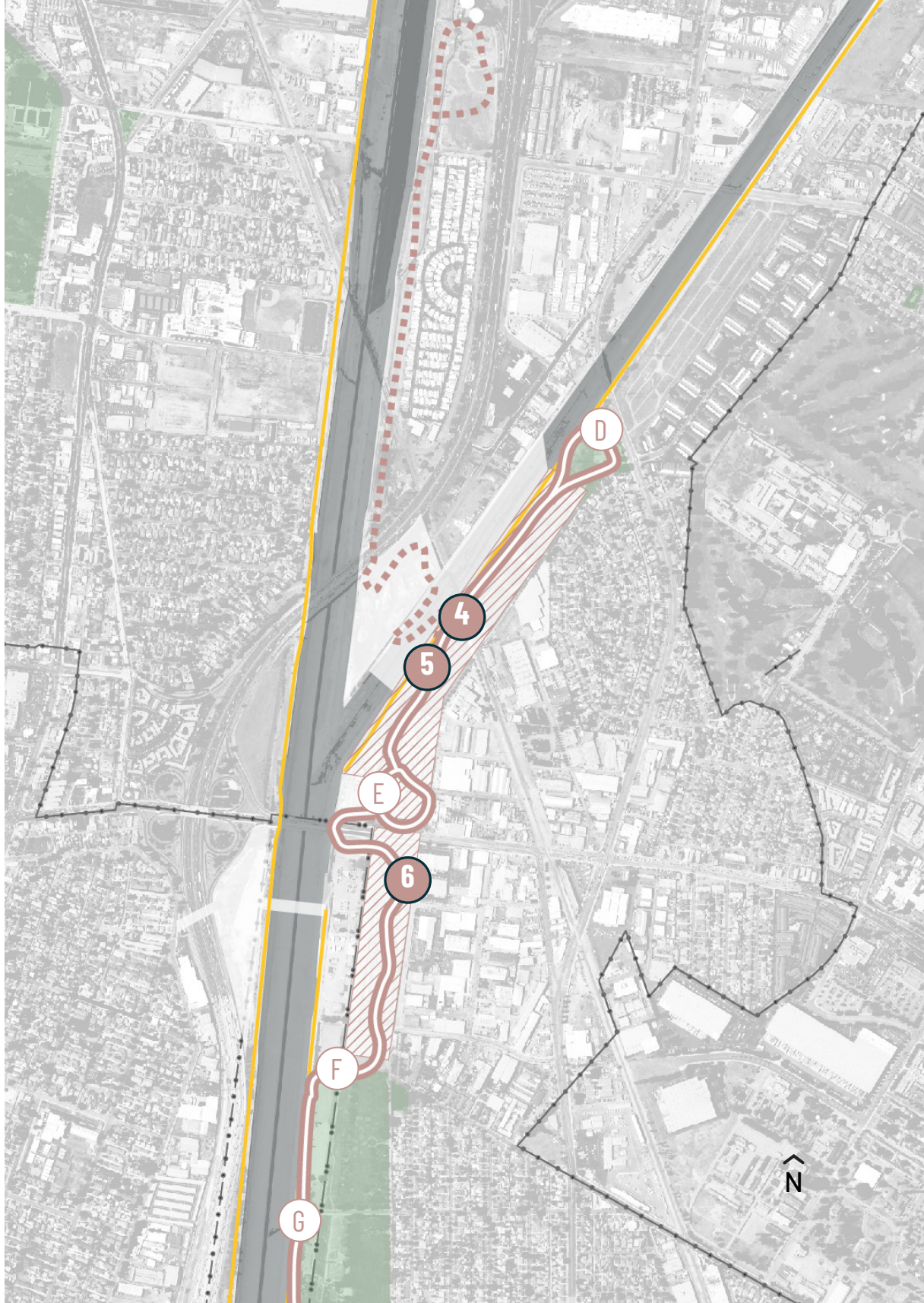
Source: Top & Middle-LA County Public Works; Bottom-OLIN

STORY LOOPS

EQUESTRIAN

SHORT LOOP: ~1 mile
LONG LOOP: ~6.2 miles

- D Circle Park
- 4 S Garfield Transmission ROW Park
- 5 N Imperial Transmission ROW Park
- E Imperial Equestrian Center
- 6 S Imperial Transmission ROW Park
- F Century Equestrian Center
- G Hollydale Regional Park



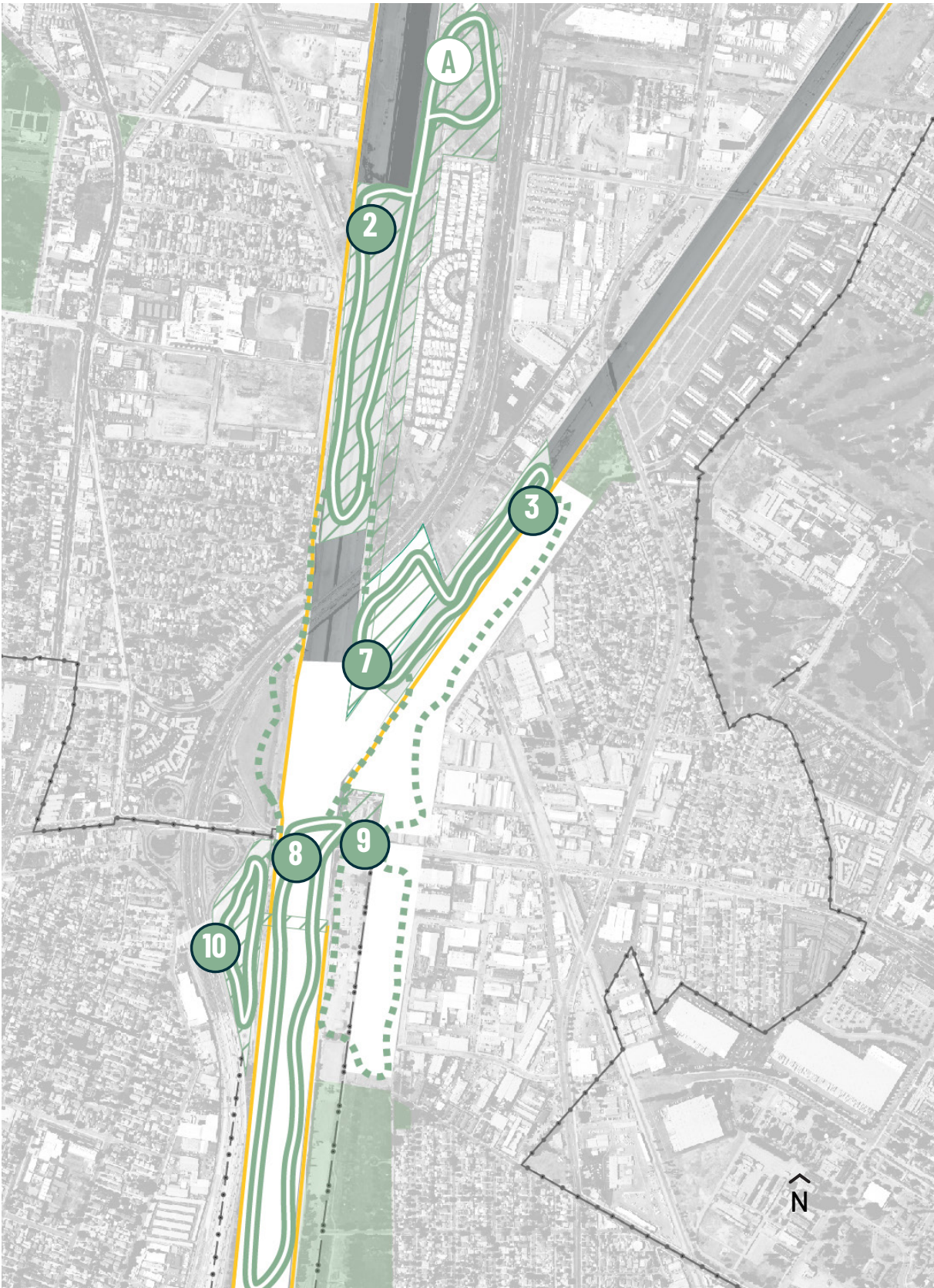
STORY LOOPS

ECOSYSTEM EXPLORATION

SHORT LOOP: ~1, ~3.1 miles

LONG LOOP: ~6.2 miles

- 2 LA River Platform Park
- A Urban Orchard
- 3 Rio Hondo Platform Park
- 7 Confluence Point Park
- 9 Water Education Center
- 8 Blue Park
- 10 Imperial Wetlands



Source: Top & Middle-LA County Public Works; Bottom-Northwalker [CC0], from Wikimedia Commons

