

Lower Los Angeles River Implementation Advisory Group Committee Meeting

August 31, 2021 | 11:30 A.M. – 12:30 P.M.

Online Meeting/ Conference Call

AGENDA

Purpose & Charge: Provide a public venue for discussion of proposed projects related to the Lower LA River, ensure proposed projects are consistent with the goals and objectives of the Lower LA River Revitalization Plan, and maximize multi-use opportunities and community benefits

I. Welcome & Introductions

- **New team intros- LA County Dept. of Public Works: Ramy Gindi & Marcela Benavides**
- **Chairs: Suely Saro- RMC, Laura Cortez & Jessica Prieto- EYCEJ, Carlos Campero- LA Conservation Corp.**
- **Guests: Melissa Guerrero-KDI, Michael Affeldt-city of LA, Tara Dales- Watershed Coordinator, Joe Gonzalez- RMC, Steve Costley- city of SG, Gladis Deras- city of SG, Ezekiel Okoya- LA County public works**

II. Discussion Items

- LA River Master Plan Update
 - Currently reviewing comments; December 2021 proposed adoption of Final LARMP
- Rio Hondo Confluence Project (RHCAP) Update
 - 9/2020 concept report completed
 - Blue Park concept is being looked at to improve access & connectivity
 - Relocation of Imperial Yard for SELA cultural center
- SELA Cultural Center Update
 - 9/18 event for schematic design phase reveal at Hollydale Park; community update will happen at this time
 - Outreach: Walking announcements to immediate community; reach out to partners for announcements; contact list announcement
 - **Feedback:**
 - **Flyer should include the projects (about 10 currently) that will be highlights, current flyer is bit confusing**
 - **If equitable development is the goal- cities should be invited to present on the housing elements at this event**
 - Timeline:



- CEQA-EIR within 12 months of project description completion (flood control relocation is holding up project description)
- End of 2023 for all design
- Construction manager is lead coordinator finalizing schedule and cost for the project (will create more clarity for timeline -maybe end of September)

III. RMC Update

- On-going Grant Opportunities (Prop 1)
 - i. Ongoing call for projects for ecosystem and watershed protection projects & expand access to diverse populations; priority to implementing elements of LLAR projects.
 - ii. There is an updated web map with further information
 - iii. Feel free to reach out to Joe Gonzalez
- River Ranger Program Pilot
 - i. 5 miles: Rio Hondo/LA River confluence área
 - ii. Discussing proposed programming/curriculum: focus on equitable usage and stewardship. Proposed training to start October 2021.
 - 1. Feedback: Indigenous programming? There will be more discussion; maybe train the lead agencies around indigenous sensitivity/culture. Still a work in progress.

IV. Open Forum / Public Comment

- Bell Gardens Recovery Project, Melissa, KDI
 - i. Planning to convert golf course along the Rio Hondo to green space
 - ii. RMC grant has been submitted, awaiting response
 - iii. Social & ecological resilience are goals of this project
 - iv. Timeline:
 - 1. 2 years that includes community stakeholders (10-12 folx)
 - 2. Months 7-12 participatory design
 - 3. Months 13-15 Long range vision plan
 - v. Feedback:
 - 1. Stormwater feature possibilities
 - 2. Inviting/consulting with indigenous folx
 - 3. Concern about policing the unhoused population in the area

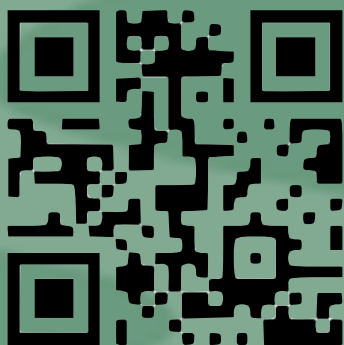
V. Next Steps

- Project Identification
 - i. Tara to present Safe Clean Water Program at full IAG
 - ii. BG Project encouraged to return to full IAG when project is funded
 - iii. SELA Municipal arts coalition
 - iv. Request for Metro to present on local rail/transit projects, including WSAB, Rail to River, and any other relevant projects
- IAG Meeting – September 22, 2021 10 A.M. - 12 P.M.

LA RIVER

END OF SUMMER FESTIVAL

SHORELINE EDITION



SEPTEMBER 18

9AM-2PM

HOLLYDALE PARK

CITY OF SOUTH GATE

LOWER LA RIVER PROJECTS / PROYECTOS DEL BAJO RÍO DE LA
COVID-19 VACCINATION CLINIC / CLÍNICA DE VACUNACIÓN COVID-19
5K RUN/WALK FOR ALL AGES / 5K CAMINATA/CARRERA PARA TODAS LAS EDADES
ART WORKSHOPS / TALLERES DE ARTE
LIVE PERFORMANCES / ESPECTÁCULOS EN VIVO
FOOD TRUCKS / CAMIONES DE COMIDA
LOCAL ARTISAN VENDORS / VENDEDORES ARTESANOS LOCALES

lariverevents.com

Los Angeles River Ranger Pilot Program

Advisory Committee

August 4, 2021



Agenda

- Introductions
- July 7, 2021 Advisory Committee Meeting Recap
- Coordination with LAHSA
- River Ambassador Program Development
- WCA Updates
- Signage Guidelines
- Round Table
- Next steps

Introductions

- Name, Agency/
Organization, Title/ Role
 - LAHSA
 - Guest CBOs

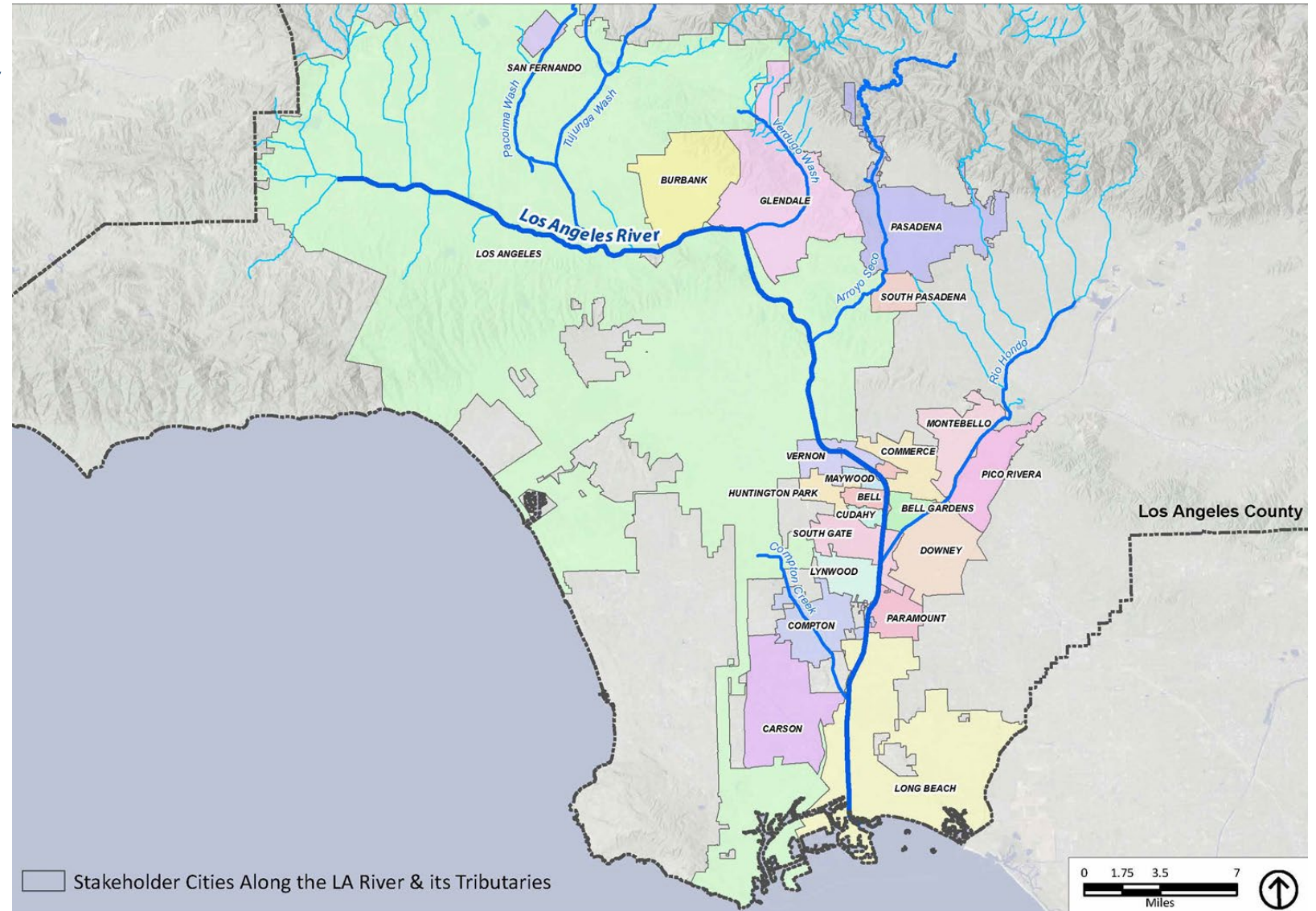
Welcome!



Program Overview

- Goals
 - Foster **connections** between communities
 - Promote **safe, equitable usage** and stewardship
 - **Activate** it as a connected greenway

Completed in May 2019
by RMC, SMMC, WCA
and MRCA



Services Provided



Public Safety
(River Ambassadors)



Maintenance
(River Ambassadors)



Outreach
(River Ambassadors)



Interpretive and
Educational
Programs



Administrative Coordination
(Advisory Committee)

Program Overview

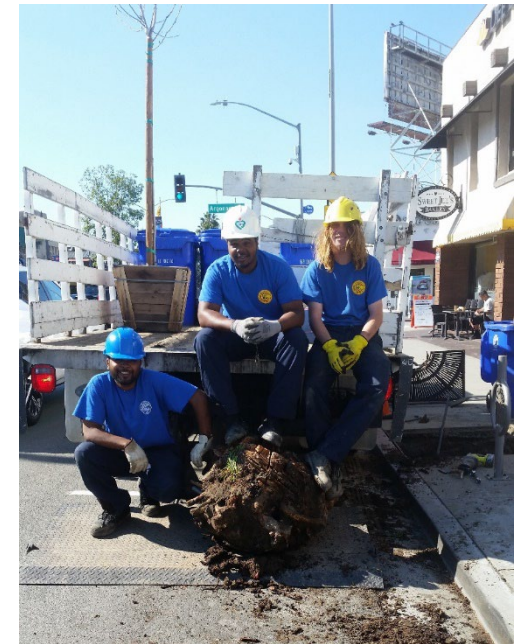
- REACH Zone at Rio Hondo Confluence
- Approximately 5 miles
- Cities of South Gate, Downey, and Bell Gardens
- Advisory Committee meetings since May



River Ambassador Program Development



- Curriculum Outline
- community centered program that promotes and provides for **safe, equitable usage and stewardship** of the Los Angeles River and its tributaries.



Mountains Recreation and Conservation Authority (MRCA)

- River Ranger Pilot Program Update
 - Implementing REACH Zone in Upper LA River on 4.5 mi area in Reseda, funding provided by LA City for Public Safety and Maintenance services only
 - Needs driven by advocacy of local neighborhood group
 - Operate under an MOU between County of LA , City of LA, and MRCA
 - Ranger will enforce LA City policies
 - Similarities and differences between upper and lower REACH approach



Action Items Report Back

- Coordinate with LAHSA
 - **Update: presentation from LAHSA**
- Refine River Ambassadors Curriculum
 - **Update: curriculum sent out last week**
- Potential signage and wayfinding to tell you what city you are in
 - **Update: presentation later**

LAHSA

Presentation on outreach and services in the Lower LA River



River Ambassador Program Development

River Ambassador 101 Curriculum
- Overview and Discussion



River Ambassadors Curriculum

- Six-month program w/ possibility of extending participation to specialize

- Week 1: Training – History of the LA River
- Week 2: Training – Safety
- Week 3 – 7: Field Studies & Education
- Week 8 – 12: Field Studies & Career Pathways
- Week 12 – 26: On the River



Safety



Education



Stewardship

WCA Updates



- Interpretive and Education Programming
 - Finalizing SOW w/ consultants
- Proposed Timeline for Implementation
 - Fall Implementation –
October 2021
 - Prepare funding application:
aiming for September approval

River Ranger Signage

- Past Discussion:
 - Signage would be beneficial for wayfinding
 - Mark jurisdictions for program
 - List any phone numbers
 - Would need County permits
- Suggestion to look at LA River Master Plan Update 2020 signage guidelines

LA RIVER

MASTER

PLAN

APPENDIX VOLUME I

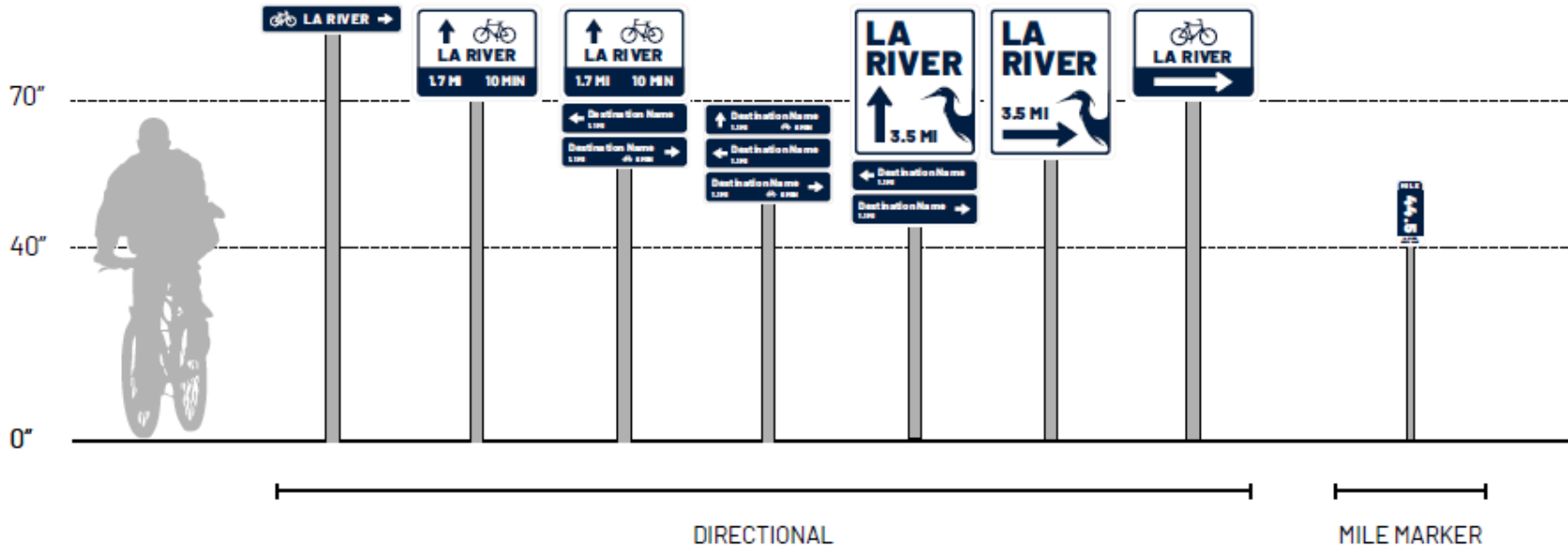
DESIGN GUIDELINES

Signage Guidelines – LA River Master Plan Update 2020

*	118	Informational
	121	Regulatory
*	126	Confirmation
	131	Interpretive
*	134	Directional
*	143	Mile Markers
	145	Pavement Markings
	147	Large Scale Icon Graphics

- Guidance in Appendix Vol 1 Chapter 4: Environmental Graphics
- 8 categories, various sizes discussed depending on project need

Signage Guidelines – LA River Master Plan Update 2020



- Adheres to Manual on Uniform Traffic Control Devices (MUTCD)
 - ADA Accessible
 - Consistent graphics, symbols, icons
- Barlow Font
- Similar color scheme
- Always use “LA River” not L.A. River or Los Angeles River
- Multilingual
- Indigenous place names

Examples of Signs

* INFORMATIONAL - OPTION 1 ONE SIGN

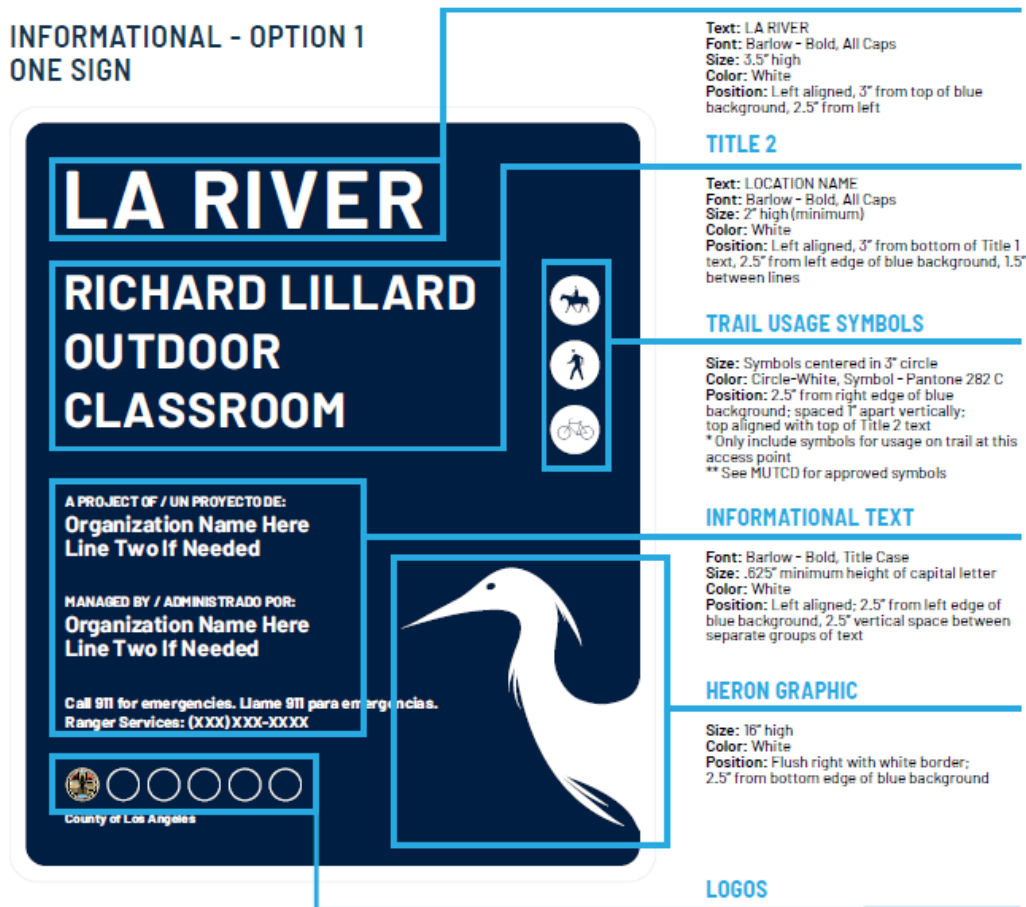


Figure 76. Informational signs provide the location name, owner, operator, and funding source of a project, along with trail usage symbols denoting types of trails available.

REGULATORY RULES

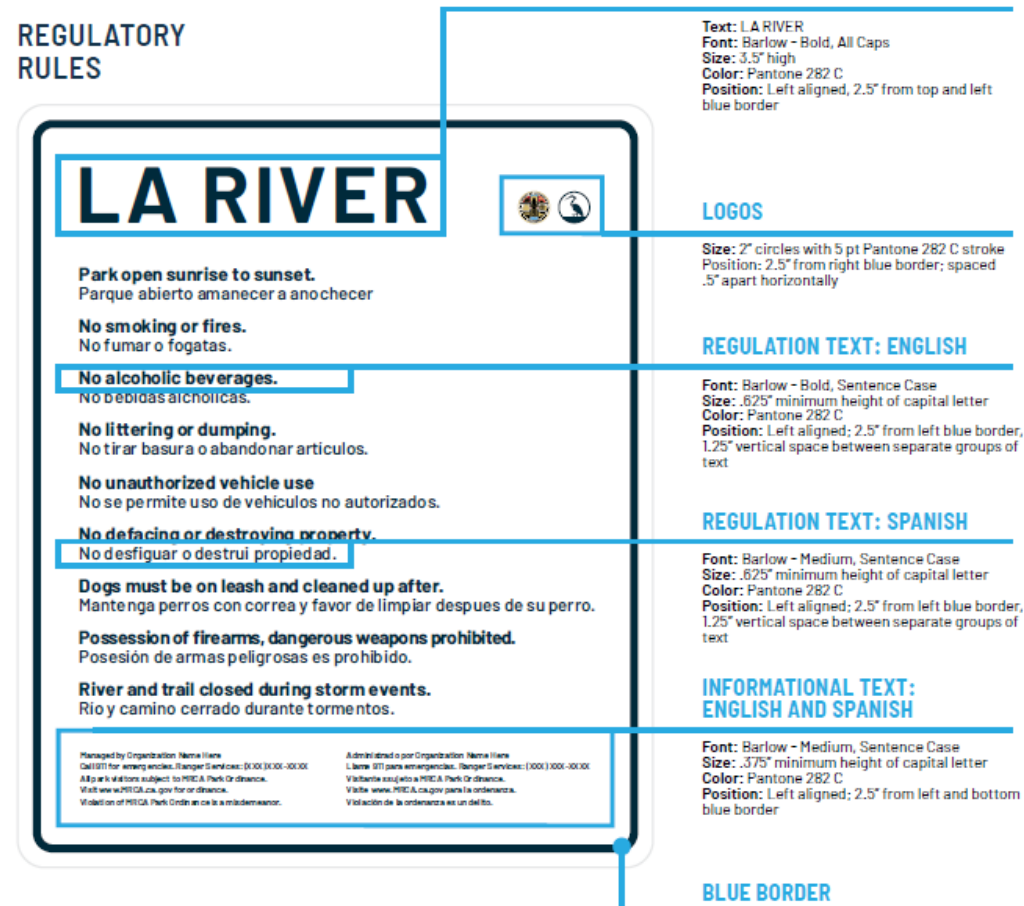


Figure 79. Regulatory rule signs alert park and trail users to the rules and regulations in effect within river parks and on trails, and must be bilingual.

Examples of Signs

* CONFIRMATION

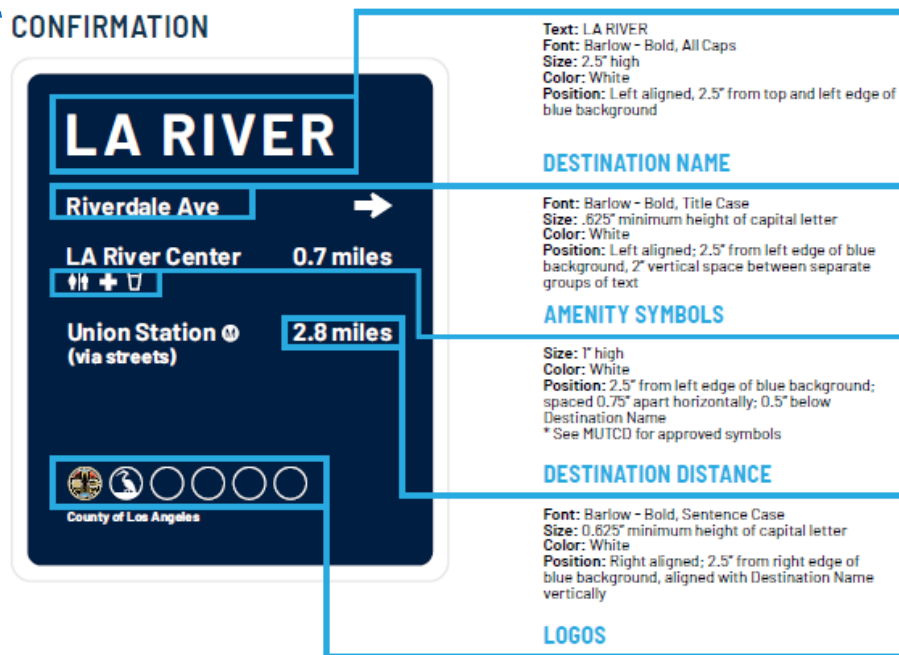


Figure 84. Confirmation signs confirm to the viewer that they are traveling the correct direction and identify the next closest major destinations. They can also indicate arrival at a destination with the addition of an arrow

CONFIRMATION OVERPASS



Figure 88. A street identifying signs should be hung above the LA River trail denoting name of street above, crossing over the trail.

* MILE MARKERS



PAVEMENT MARKINGS

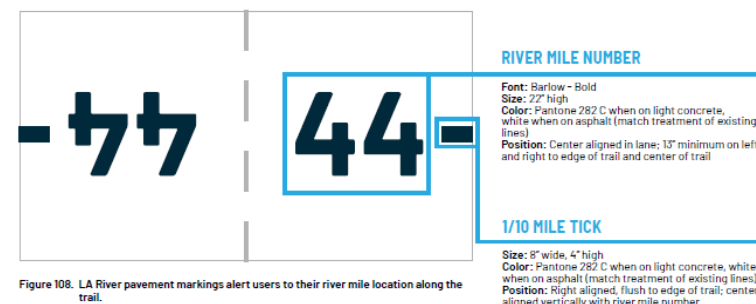


Figure 108. LA River pavement markings alert users to their river mile location along the trail.

Examples of Signs

* DIRECTIONAL PEDESTRIAN DESTINATION PANELS

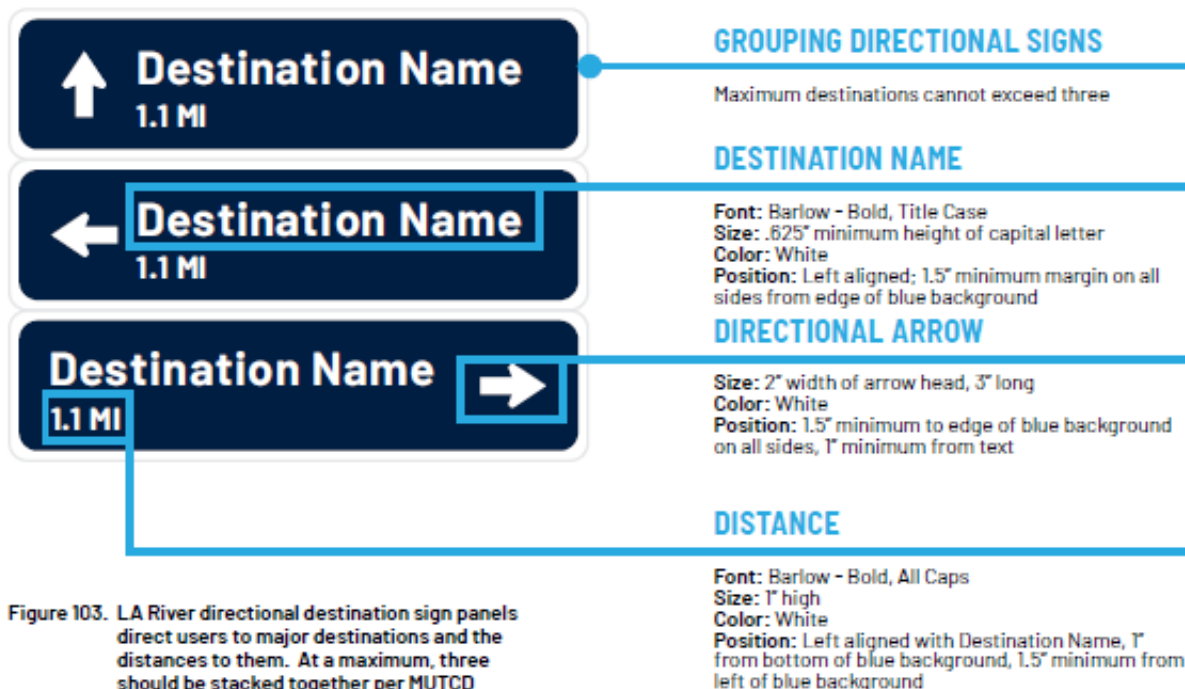


Figure 103. LA River directional destination sign panels direct users to major destinations and the distances to them. At a maximum, three should be stacked together per MUTCD guidelines.

* DIRECTIONAL WITH DISTANCE

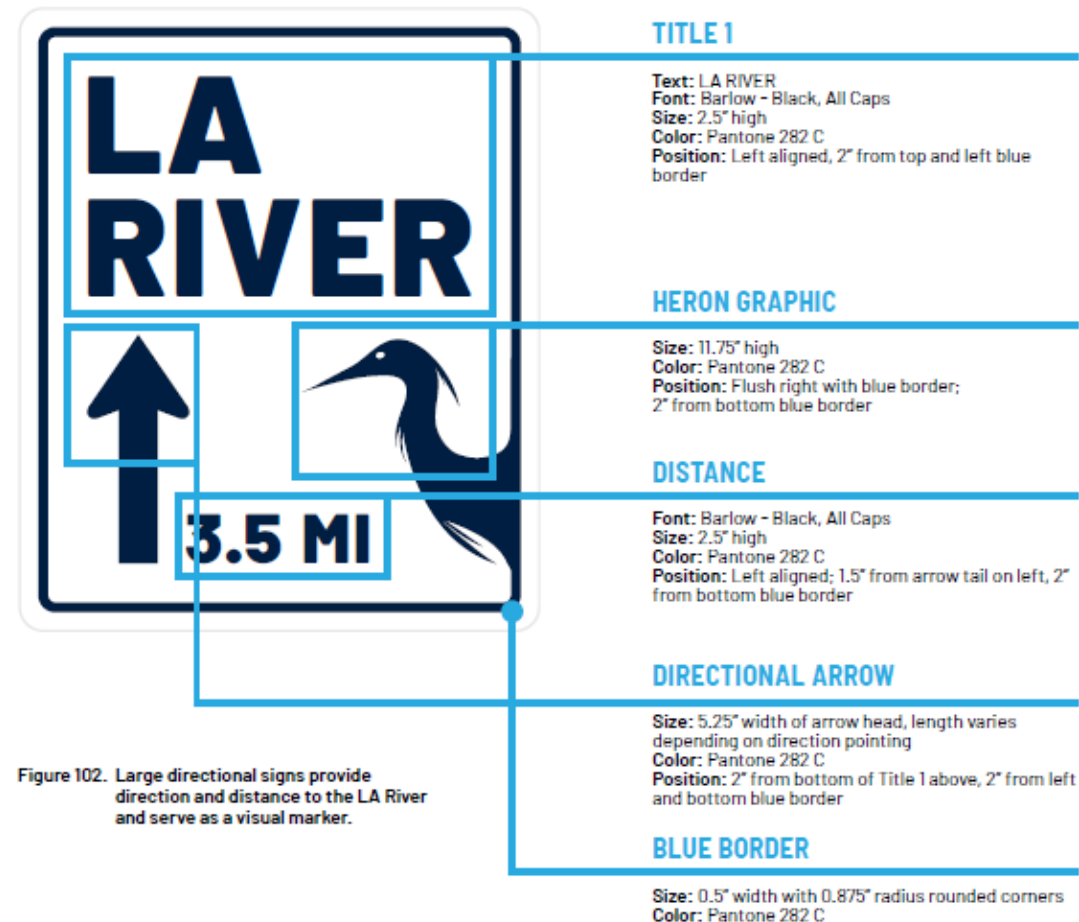


Figure 102. Large directional signs provide direction and distance to the LA River and serve as a visual marker.

COMMUNITY EXPRESSION

Some flexibility allowed

Within the suite of LA River environmental graphics, there are opportunities for unique community expression. Certain elements can be customized, while other elements should stay consistent for legibility and clarity in wayfinding.

The following types of environmental graphics must be consistent throughout the LA River:

- Regulatory
- * • Confirmation
- * • Directional
- * • Mile markers
- Pavement markings (only at river pavilion or gateway moments where other regulatory markings are suspended)

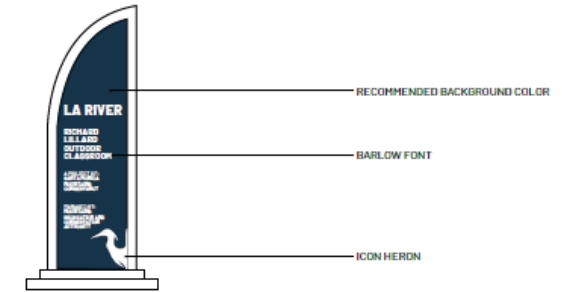
The following types of environmental graphics can be modified for an individual project as long as certain elements remain consistent:

- Pavement markings
- * • Informational
- Interpretive signs and displays
- Large scale icon graphics

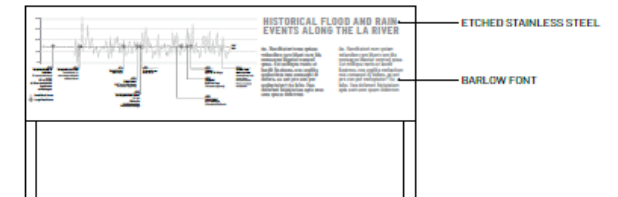
Within the signs that can be modified, the following elements should remain consistent:

- Barlow font
- Heron symbol or icon
- The required background color (the color variation in natural uncoated materials and other neutral colors are allowed).

INFORMATIONAL EXAMPLE



INTERPRETIVE EXAMPLE



LARGE SCALE ICON GRAPHICS EXAMPLE



Figure 113. Elements of informational environmental graphics, interpretive signs and displays, and large scale icon graphics can all be customized for specific projects. Designers can create their own approaches within the outlined parameters on a project by project basis.

River Ranger Signage

- Guidelines speak mostly to signage to point to the LA River and project focused
- Some designs not flexible on wording
- Goals:
 - Wayfinding
 - Mark jurisdictions for program
 - List any phone numbers/ resources
- Questions to consider:
 - Would the signs meet the objectives?
 - Does it make sense for us to have signs for the pilot program?
 - What type of information should be displayed?
 - Should we consider temporary signs? Permissible permit needed?

Round Table Discussion

- Education/Workforce Development
- CBOs
- MRCA
- County
- Cities



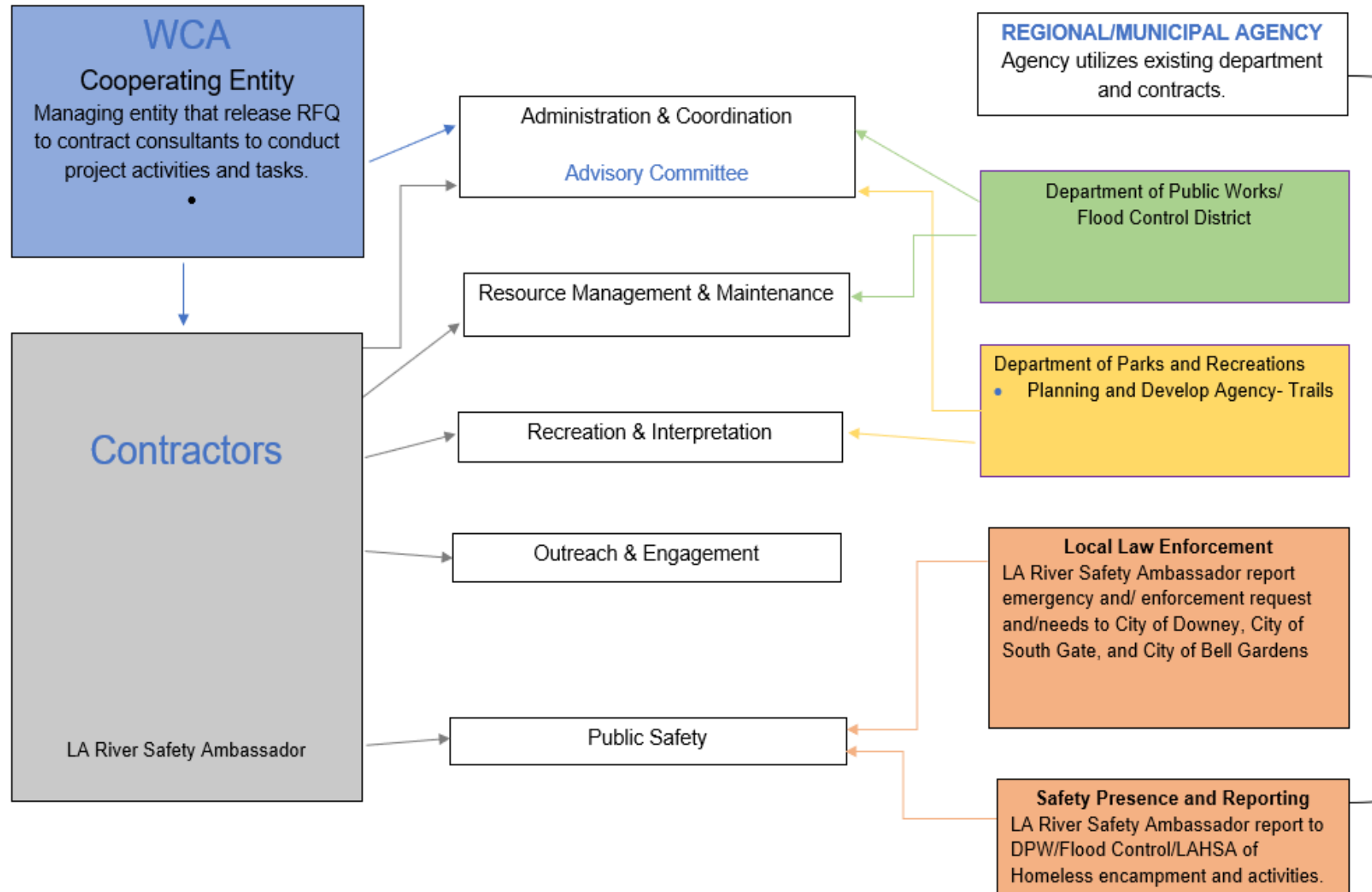
Next Steps

- Next Meeting
 - monthly through end of 2021
 - First Wed @ 1:30pm
 - Action Items



RR Pilot Program: REACH Zone @ Rio Hondo

Confluence Chart



Bell Gardens Golf Course Recovery Project

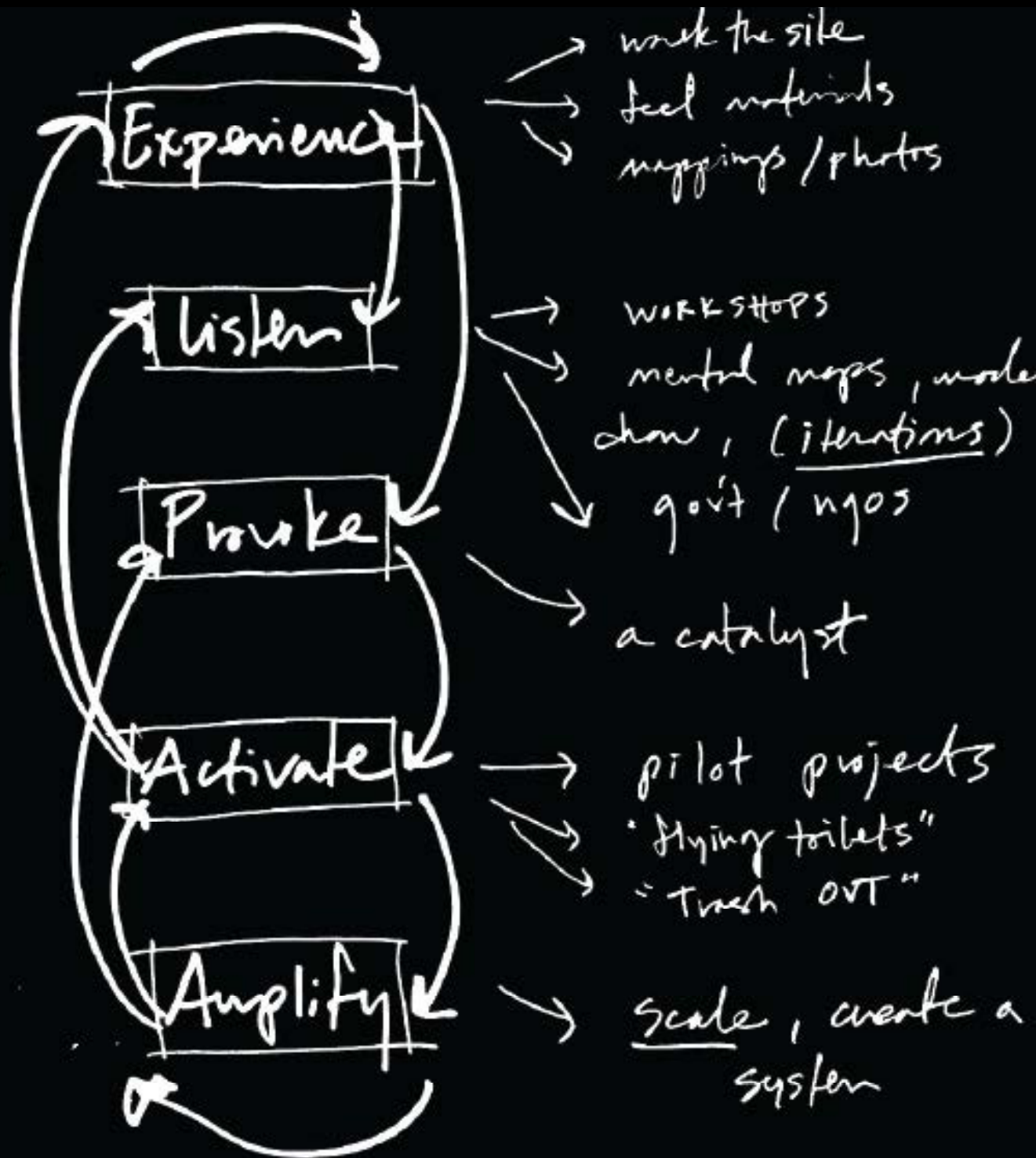
**LOWER LA RIVER IAG
08.31.21**



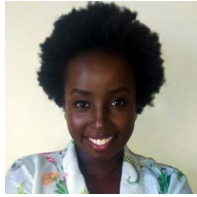
Mission

KDI is a non-profit design and community development organization. We partner with under-resourced communities to advance equity and activate unrealized potential in their neighborhoods and cities. We accomplish this mission through advocacy, research, planning, and built works.

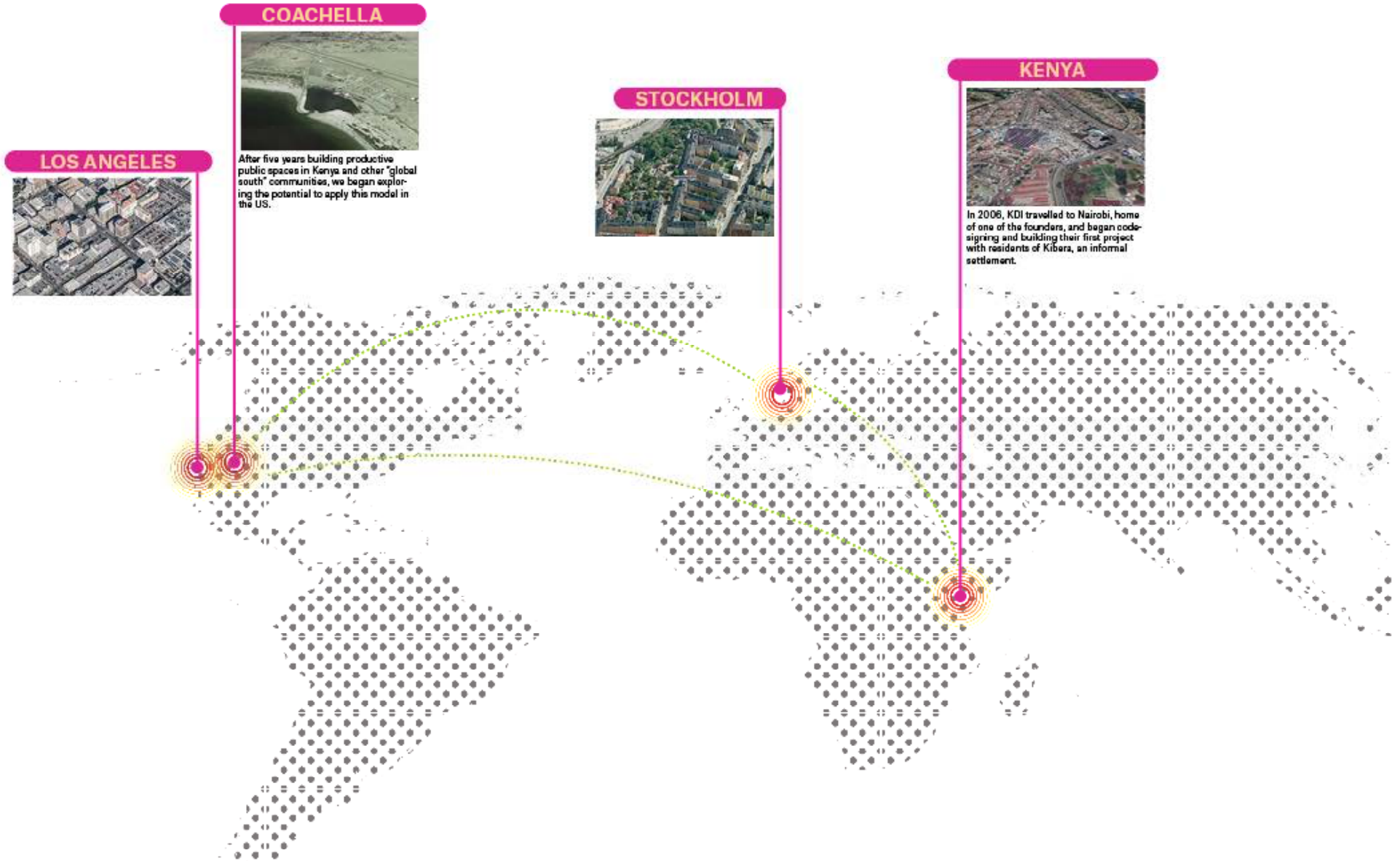
"Kounkuey" ↔



**def. koun•ku•ey:
to know a place
intimately**



Where we work



Service Areas



Plan + Program



Design + Build

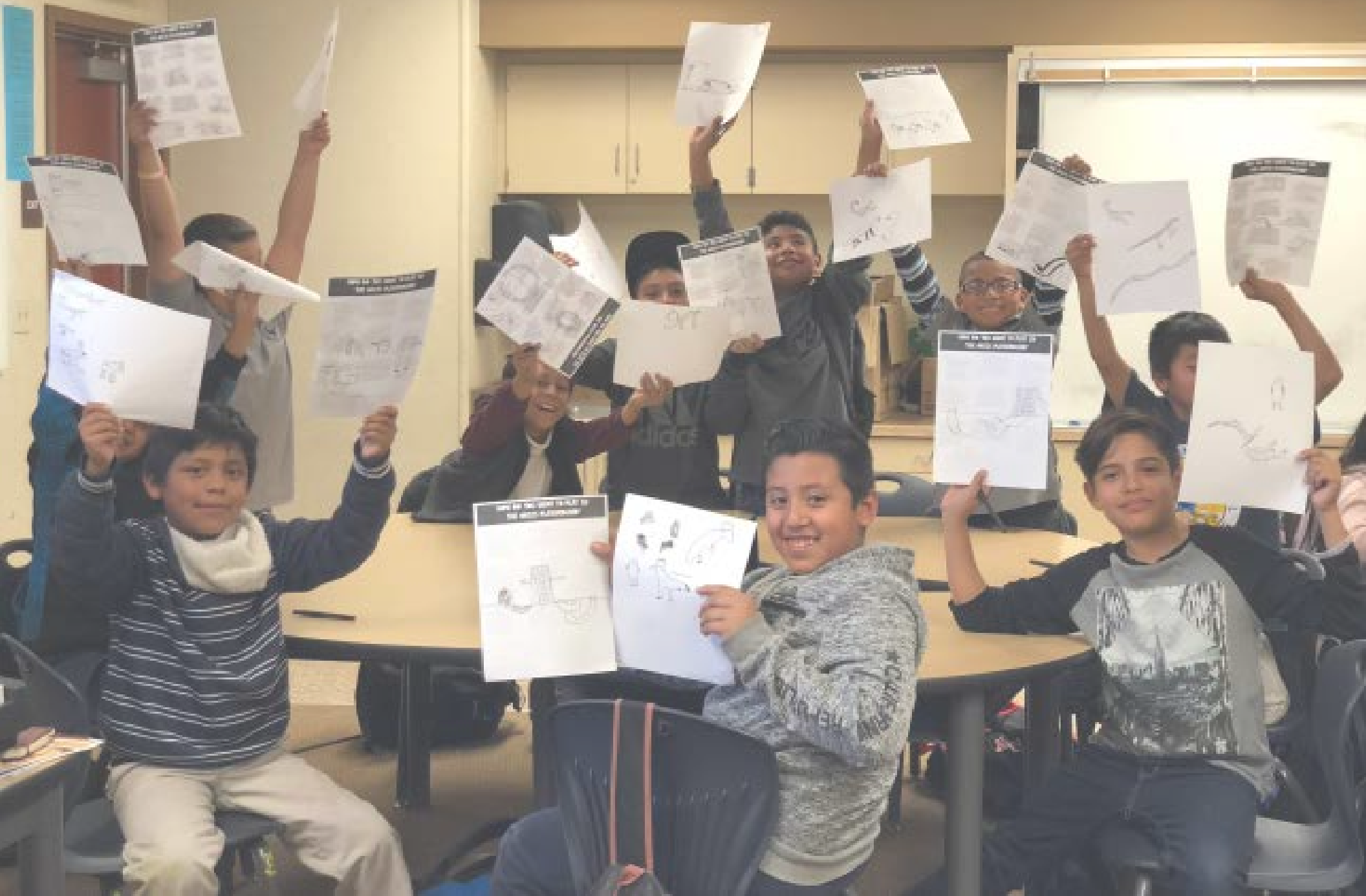
PLAY JUEGA

• This playground is for the use of children 2-12 years.
• Adult supervision is required.
• Play surface may be hot; test before use.

• Estos juegos son para el uso de niños de 2-12 años.
• Se recomienda jugar bajo la supervisión de adultos.
• Las superficies de juego pueden estar calientes; pruebe antes de usar.



Oasis Elementary Playground Workshop



Community Engagement



Coachella Civic Center Community Prioritizing



Celebrate Culture



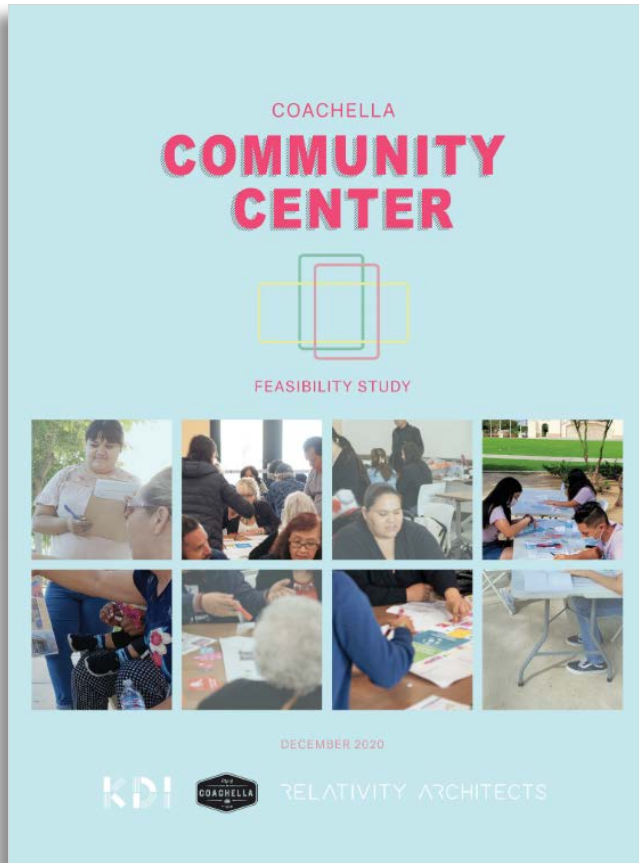
Playground



Coachella Civic Center



Planning Document | Funding Resources



Coachella City Hall, a unique and iconic building in the heart of the City, has been reimagined into a beautiful, functional and sustainable Coachella Community Center. With new massing, extensive new glazing, new façade materials and redesigned entry points, the building combines its history with a contemporary future. The style of the building, an updated and contemporary Spanish Colonial, is consistent with the architectural preferences of the community and takes inspiration from the Library across Sixth Street; sustainable measures such as cool roofs, solar panels and completely new HVAC and Plumbing systems modernize this building into an efficient and striking home for its new program.

APPENDIX II: POTENCIAL FUNDING RESOURCES

GENERAL

Riverside County- Community Development Block Grant. The Community Development Block Grant (CDBG) is a Federally funded block grant program created by Congress in 1974, with the overall goal to develop viable urban communities by providing decent housing and a suitable living environment primarily for low-moderate income persons. [Available Online.](#)

SMALL BUSINESS AND ECONOMIC DEVELOPMENT

California Employment Training Panel Grant. \$75,000-\$750,000; Cycle continuous. The Employment Training Panel (ETP) provides funding to employers to assist in upgrading the skills of their workers through training that leads to good paying, long-term jobs, including groups of employers such as Chambers of Commerce, Joint Apprenticeship Training Committees, Trade Associations or Economic Development Corporations. [Available Online.](#)

The Small Business Administration works with different organizations to provide federal financial assistance (grants) community resources for certain small businesses. If you can't find any grants that fit your profile, you can see if you qualify for any of our funding programs, or schedule to meet with a counselor to talk about financing your business. [Available Online.](#)

SCORE's mission is to foster vibrant small business communities through mentoring and education. With the nation's largest network of volunteer, expert business mentors, SCORE has helped more than 11 million entrepreneurs since 1964. [Available Online.](#)

GREEN SPACE AND INFRASTRUCTURE

CalEPA- Environmental Justice Small Grants. \$50,000 (Max); Anticipate solicitation in May 2021. Grants are awarded on a competitive basis for projects that are based in communities with the most significant exposure to pollution. [Available Online.](#)

California Natural Resources Agency- Urban Greening. \$28.5 million left to be awarded; Application postponed. Eligible urban greening projects will reduce GHG emissions and provide multiple additional benefits, including, but not limited to, a decrease in air and water pollution or a reduction in the consumption of natural resources and energy. Eligible projects will result in the conversion of an existing built environment into green space that uses natural and green infrastructure approaches to create sustainable and vibrant communities. [Available Online.](#)

California Natural Resources Agency- Green Infrastructure Program. \$50,000-\$3 million; New cycle TBD. All projects must achieve measurable benefits by a) acquiring, creating, enhancing or expanding community parks and green spaces, or b) use natural

Bell Gardens Golf Course Recovery Project



Project Location Maps | Project Site and Neighborhood Context

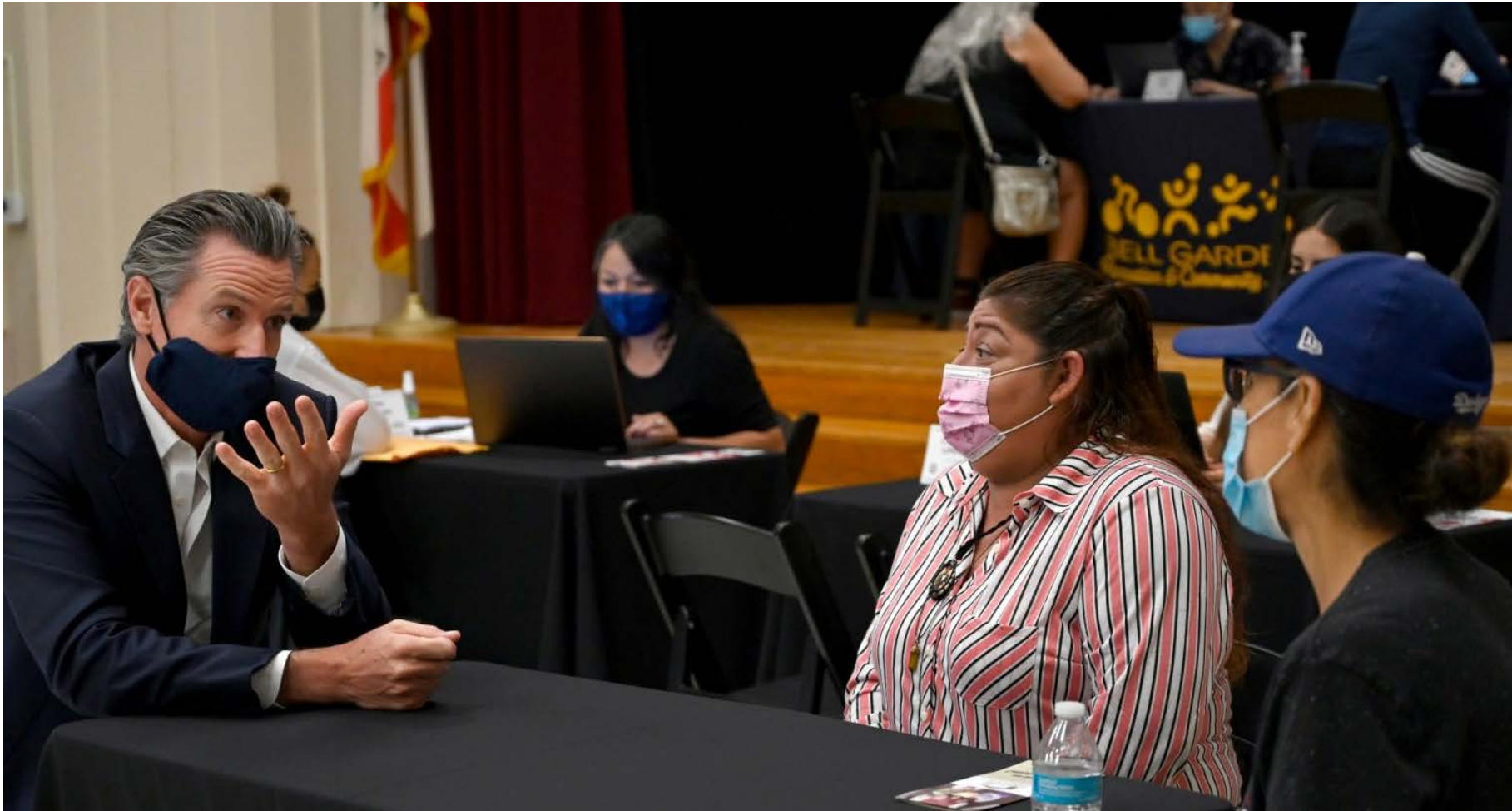


Project Location Map | Regional Environmental Justice Context



The site represents an opportunity to mitigate negative environmental conditions in an area that has a high park need, despite a lot of park acreage being used for golf courses only serving a small segment of local park users.

Bell Gardens leads California



Office of the Governor of California  @CAgovernor · Jul 14

"I went to apply & it works. It's real. They paid for my bills, they paid 2 months rent, plus they're paying til September. There is help & we get to sleep better at night." - Jennifer in Bell Gardens



**Kounkuey
Design
Initiative**



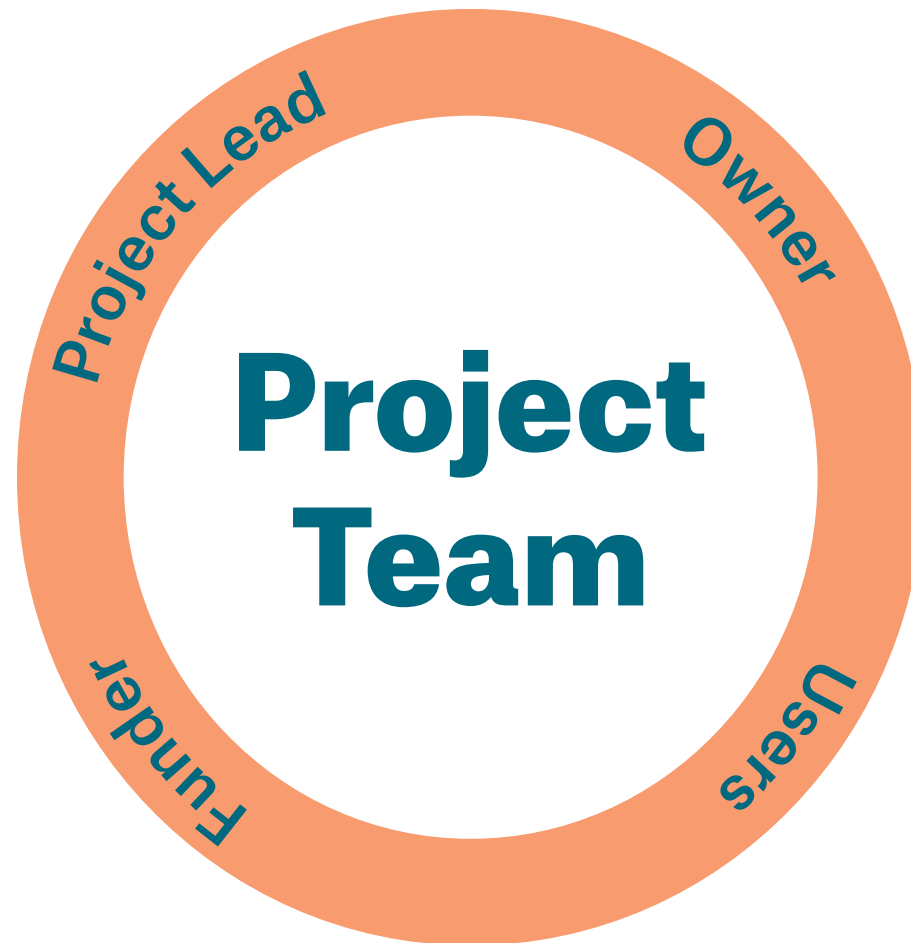
**City of Bell
Gardens**



**San Gabriel and
Lower Los Angeles
Rivers and Mountains
Conservancy**



**Community
Members**



Community Engagement in Bell Gardens



Community Engagement in Bell Gardens



Project Site Photographs | Golf Course



Photo of Bell Gardens Golf Course reveals the sparsely used golf course with expanses of grass that demand excessive resources and labor to maintain.

Multi-Benefit Park Precedents

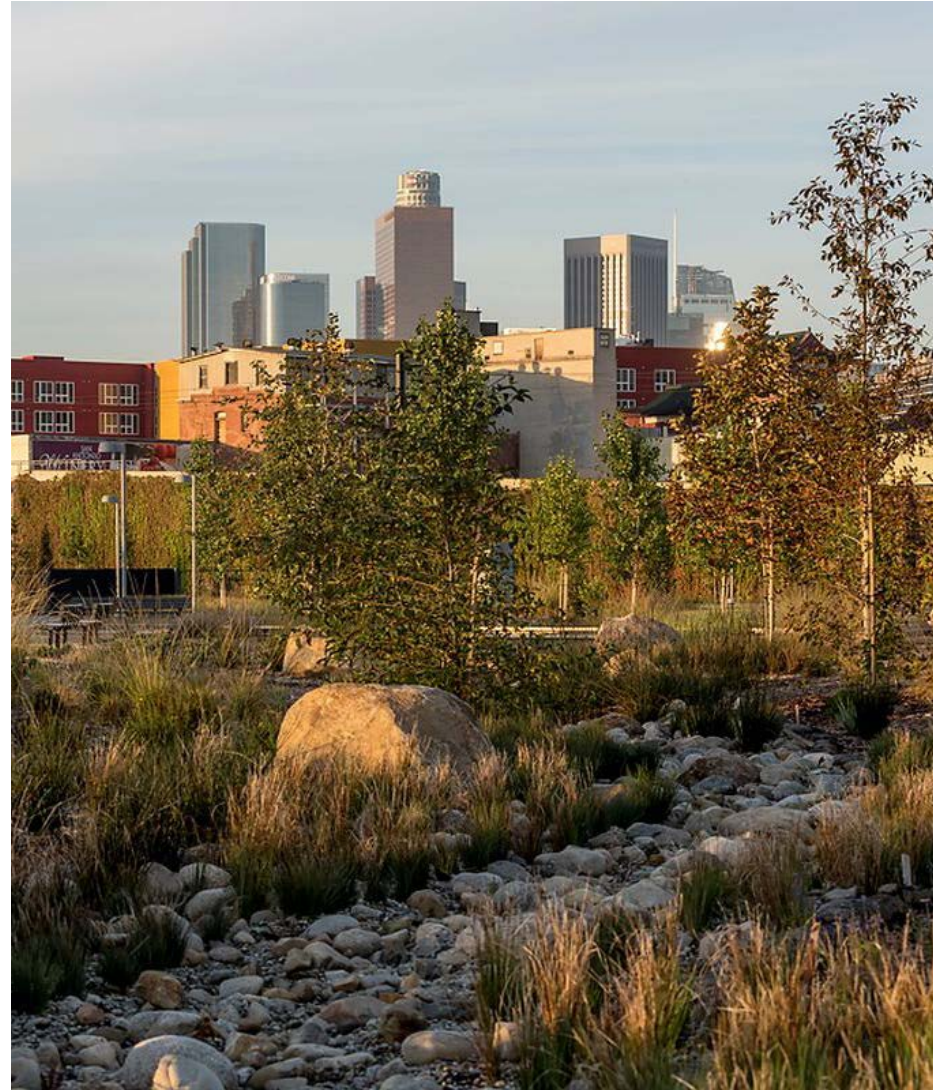


Photo of North Shore Community Park

Multi-Benefit Park Precedents



Lewis MacAdams Riverfront Park



LA State Historic Park

Project Site Photography | Bell Gardens



An underutilized cafe sits mostly empty at the golf course, but could be re-envisioned into an amenity like a concession stand or river education center open to all Bell Gardens John Anson Ford Park users.

Project Site Photography | Rio Hondo Bike Trail



Photo of Community members biking on the Rio Hondo River that separates the Golf Course and the Rio Hondo Wash. Note that only a wrought iron fence and a few trees stand between a miscalculated golf ball and residents on a peaceful stroll.

Project Site Photography | Adjacent Park Use



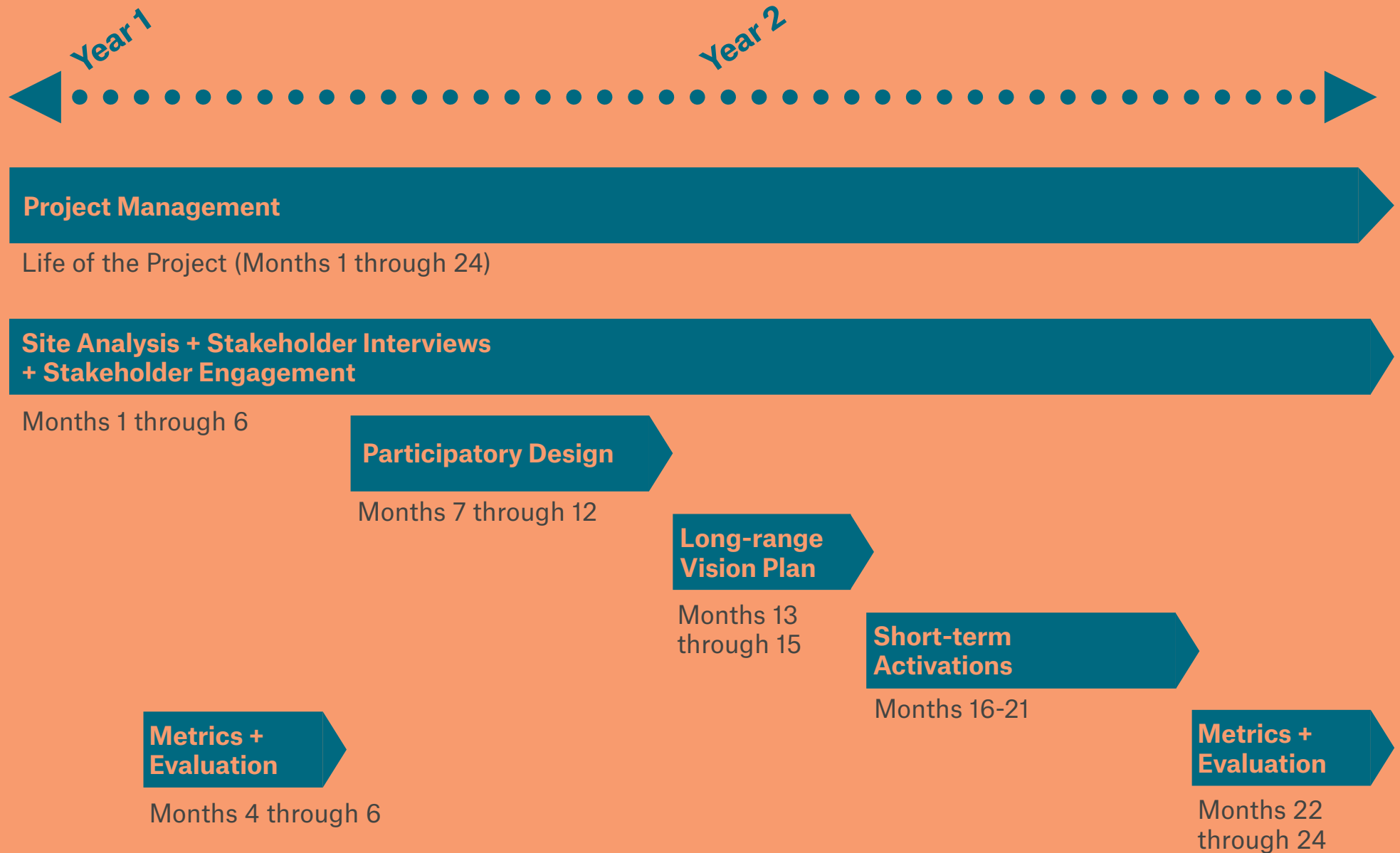
Photo of Bell Gardens John Anson Ford Park (adjacent to the project site) where community members gather at tree-covered picnic benches to play music, relax, and play. The community park has many users and uses.

Project Site Photography | Comparing Usage



Photos of the golf course parking lot (left) and the John Anderson Park parking lot (right) reveal the stark difference in demand and use of these public amenities.

Timeline



Thank you!

Q/A Discussion

